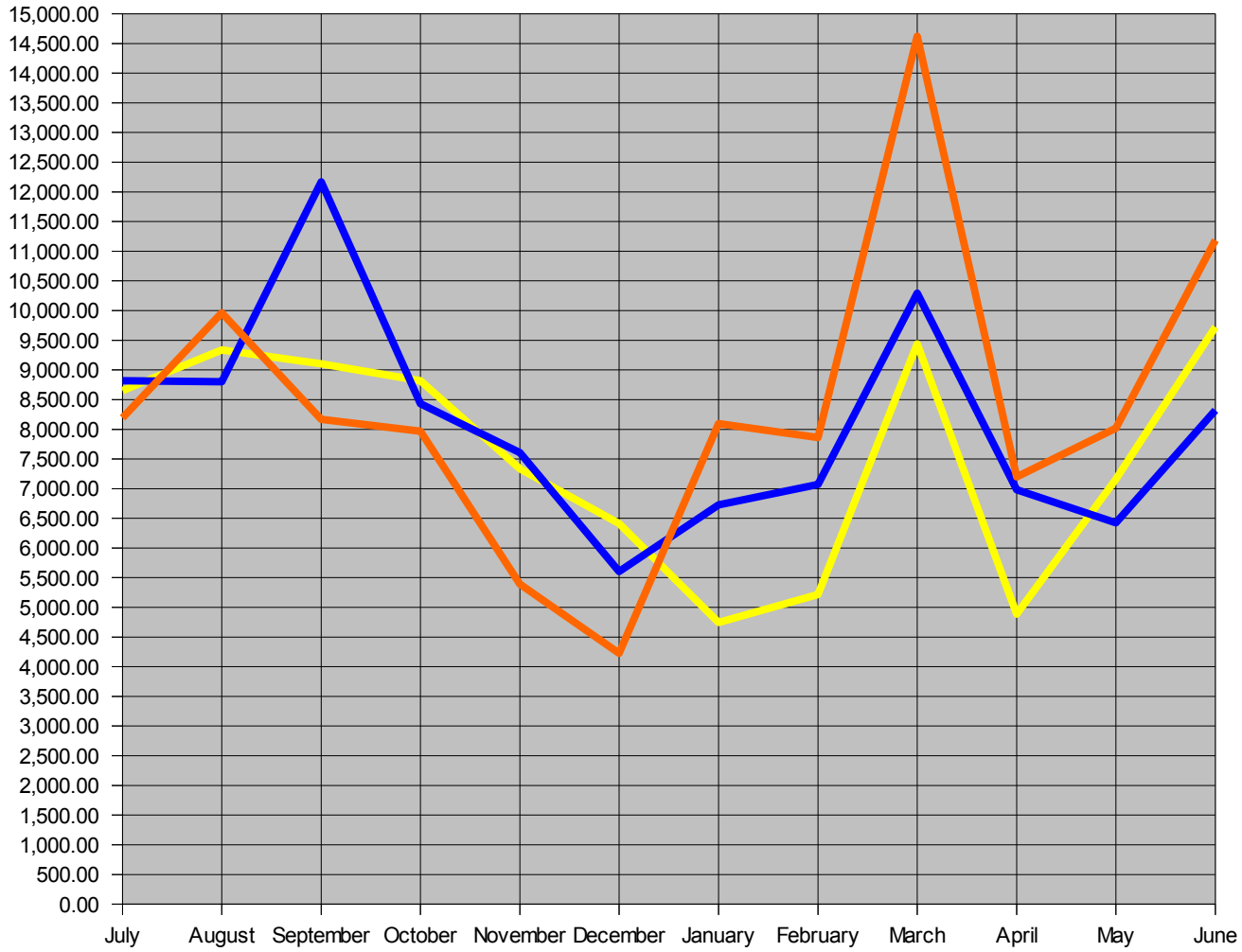


City of Nome Bed Tax Revenue



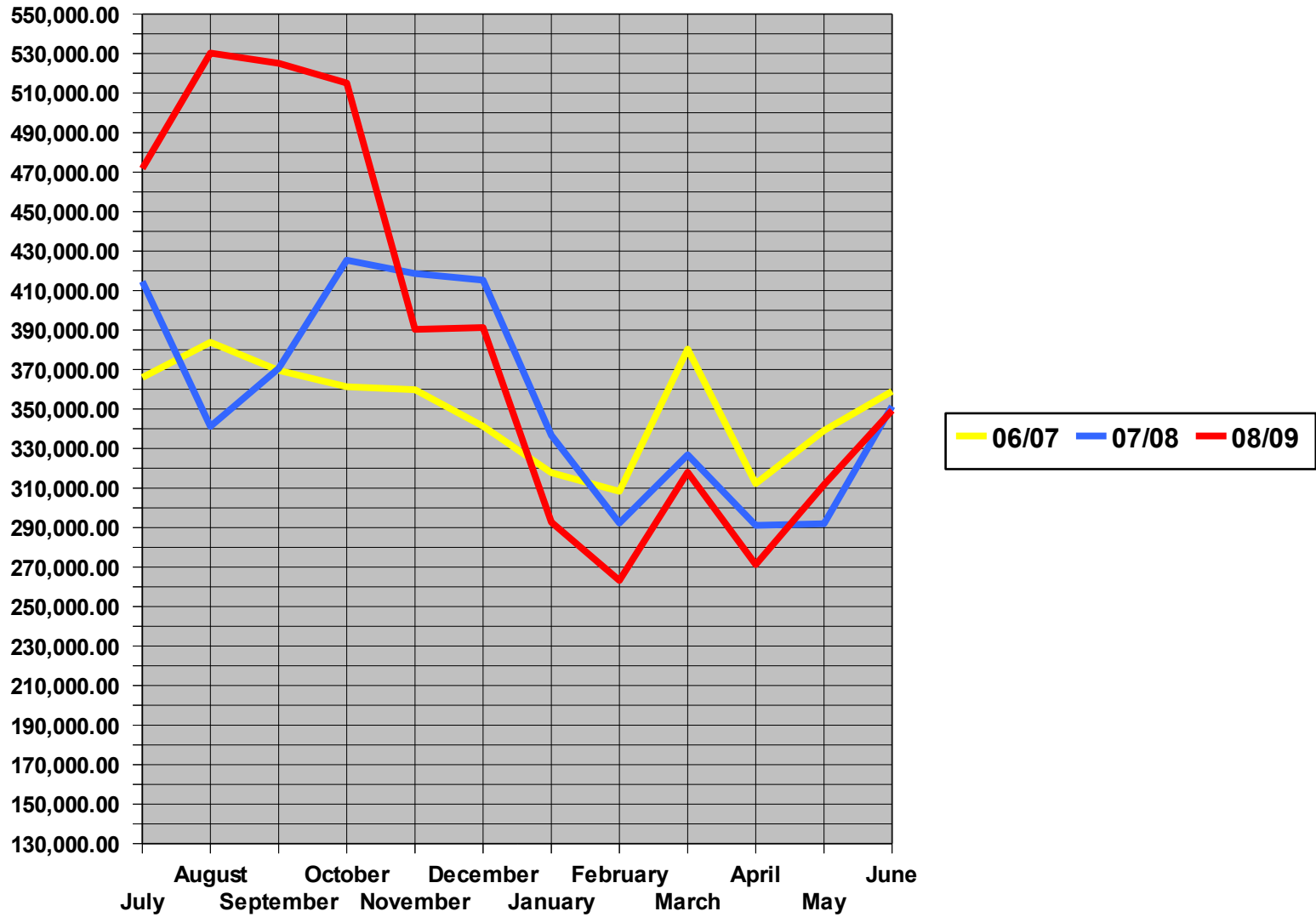
06/07 07/08 08/09

City of Nome
Bed Tax Revenue

<u>Report for Month</u>	<u>97/98</u>	<u>98/99</u>	<u>99/00</u>	<u>00/01</u>	<u>01/02</u>	<u>02/03</u>	<u>03/04</u>	<u>04/05</u>	<u>05/06</u>	<u>06/07</u>	<u>07/08</u>	<u>08/09</u>
July	6,601.21	6,025.40	7,609.32	8,529.94	8,119.60	8,806.34	9,846.06	9,619.30	9,763.78	8,650.99	8,818.78	8,193.37
August	5,418.87	6,179.53	6,455.22	7,815.76	8,208.36	9,654.51	9,863.27	10,884.12	9,765.70	9,335.88	8,800.04	9,963.96
September	3,656.93	4,966.13	5,911.82	7,524.61	5,839.42	6,586.25	7,646.88	8,251.19	7,173.60	9,100.99	12,167.36	8,165.48
October	5,862.09	5,735.78	7,857.39	8,707.78	7,159.84	6,845.95	9,588.77	9,073.61	6,778.06	8,817.05	8,430.62	7,969.54
November	3,101.11	3,253.22	4,175.54	5,304.62	8,494.37	7,793.53	7,556.99	6,010.46	5,002.41	7,333.20	7,606.25	5,390.97
December	4,116.64	2,489.73	3,277.50	5,078.86	5,057.87	4,178.93	3,640.57	4,958.62	4,363.39	6,411.37	5,601.89	4,224.60
January	2,444.98	2,483.39	2,961.72	5,689.33	3,723.30	5,024.51	6,466.64	4,075.14	4,613.14	4,744.02	6,726.24	8,093.79
February	3,433.84	3,215.54	4,082.24	4,963.00	5,489.69	4,725.62	4,921.55	5,670.06	4,132.26	5,219.19	7,070.12	7,859.76
March	5,450.83	6,043.60	5,686.91	8,324.14	7,482.21	9,815.80	11,908.98	11,321.18	9,043.38	9,438.23	10,293.62	14,621.62
April	3,998.20	3,675.07	4,526.62	6,602.70	4,852.76	7,494.98	5,772.25	7,420.52	6,354.59	4,884.73	6,981.87	7,199.31
May	3,862.42	2,462.25	4,203.93	5,753.75	8,123.53	7,201.77	6,672.87	7,655.02	5,932.37	7,159.82	6,425.64	8,017.34
June	7,351.55	6,947.44	8,507.17	10,531.61	11,723.76	10,859.41	10,855.75	12,168.55	10,387.41	9,723.84	8,320.11	11,188.59
Totals	55,298.67	53,477.08	65,255.38	84,826.10	84,274.71	88,987.60	94,740.58	97,107.77	83,310.09	90,819.31	97,242.54	100,888.33

*Effective January 2009 Bed Tax collected at 6%

City of Nome Sales Tax Revenue



City of Nome
Sales Tax Revenue

Report for Month	97/98	98/99	99/00	00/01	01/02	02/03	03/04	04/05	05/06	06/07	07/08	08/09
July	179,882.63	177,338.84	184,635.99	201,413.13	208,558.06	235,989.38	235,349.72	328,747.83	369,595.06	366,048.75	414,601.21	471,745.74
August	180,371.60	173,089.54	192,769.66	203,981.29	217,138.88	237,198.14	322,994.39	318,238.50	378,077.04	383,802.68	341,208.30	530,210.88
September	176,575.38	184,190.28	198,324.16	202,928.36	209,319.69	222,496.56	250,265.64	341,792.41	323,535.16	369,556.59	370,564.63	525,073.57
October	197,970.64	208,901.15	221,658.12	252,111.31	227,339.60	246,261.59	303,324.56	299,570.52	352,155.37	361,249.90	425,349.96	515,097.58
November	165,970.31	353,069.25	170,160.73	230,224.08	209,520.96	246,651.48	313,945.82	328,348.96	326,318.13	359,750.50	418,666.17	390,287.96
December	196,017.17	184,675.29	205,470.75	204,577.23	249,408.84	220,136.39	317,365.90	322,805.48	303,771.54	341,282.72	415,308.79	391,292.33
January	145,360.83	142,761.95	159,847.24	173,092.94	181,375.14	185,410.68	235,511.61	251,398.12	244,472.95	317,806.49	336,791.87	292,683.84
February	155,875.90	137,274.86	162,003.75	186,155.77	169,372.41	174,132.47	304,596.15	263,065.47	225,118.24	308,332.05	292,239.16	263,194.84
March	179,967.01	184,122.85	202,841.11	256,132.70	211,542.05	222,244.27	309,377.82	329,402.95	292,333.53	380,321.54	326,853.38	318,001.05
April	143,431.46	146,326.52	162,843.53	202,409.55	176,317.83	174,577.05	252,669.77	269,045.07	237,120.77	312,231.50	291,062.76	271,226.24
May	143,539.09	143,565.74	175,770.37	196,930.58	199,383.49	226,193.40	249,013.58	312,436.69	268,366.34	339,172.98	291,915.93	311,685.04
June	203,312.62	197,990.63	200,536.21	225,483.19	225,456.35	217,584.50	381,801.57	424,148.33	337,646.69	359,015.31	351,434.91	349,334.85
Totals	2,068,274.64	2,233,306.90	2,236,861.62	2,535,440.13	2,484,733.30	2,608,875.91	3,476,216.53	3,789,000.33	3,658,510.82	4,198,571.01	4,275,997.07	4,629,833.92

O-05-10-01 Effective December 1, 2005- 1% Sales tax exemption on purchase of water, sewer, garbage, electric, and landfill

O-05-12-01 Effective January 15, 2006 through May 15, 2006 Sales tax exception on groceries

O-07-11-01 Effective January 15, 2008 through June 30, 2008 Sales Tax exception on groceries

O-08-12-01 Effective January 15, 2009 through April 30, 2009 Sales Tax exception on groceries