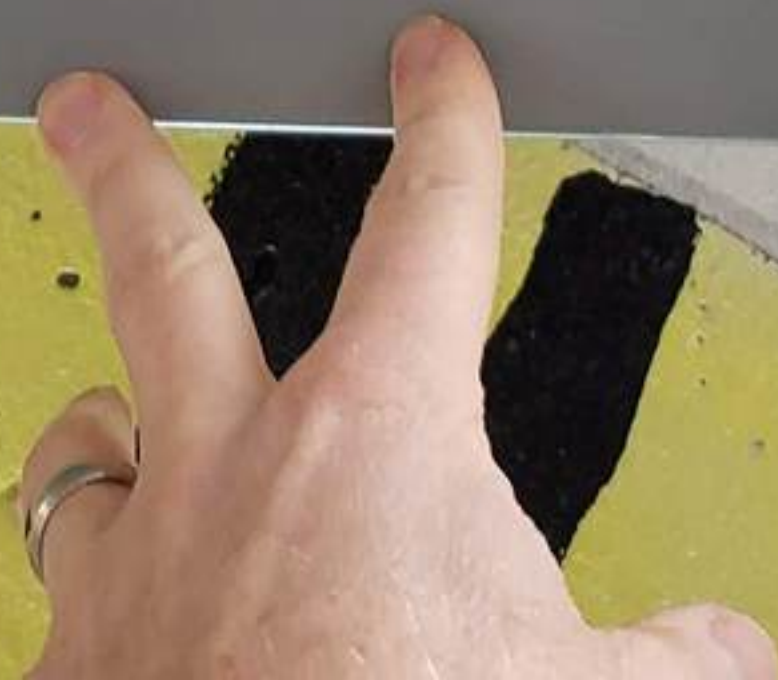




DDCP-2



Wash. Co.





1-CP102 STATUS LITE

5-CP102 ENABLE SWITCH

9-CV6 VALVE SWITCH

ALL OTHERS SPARE I/O

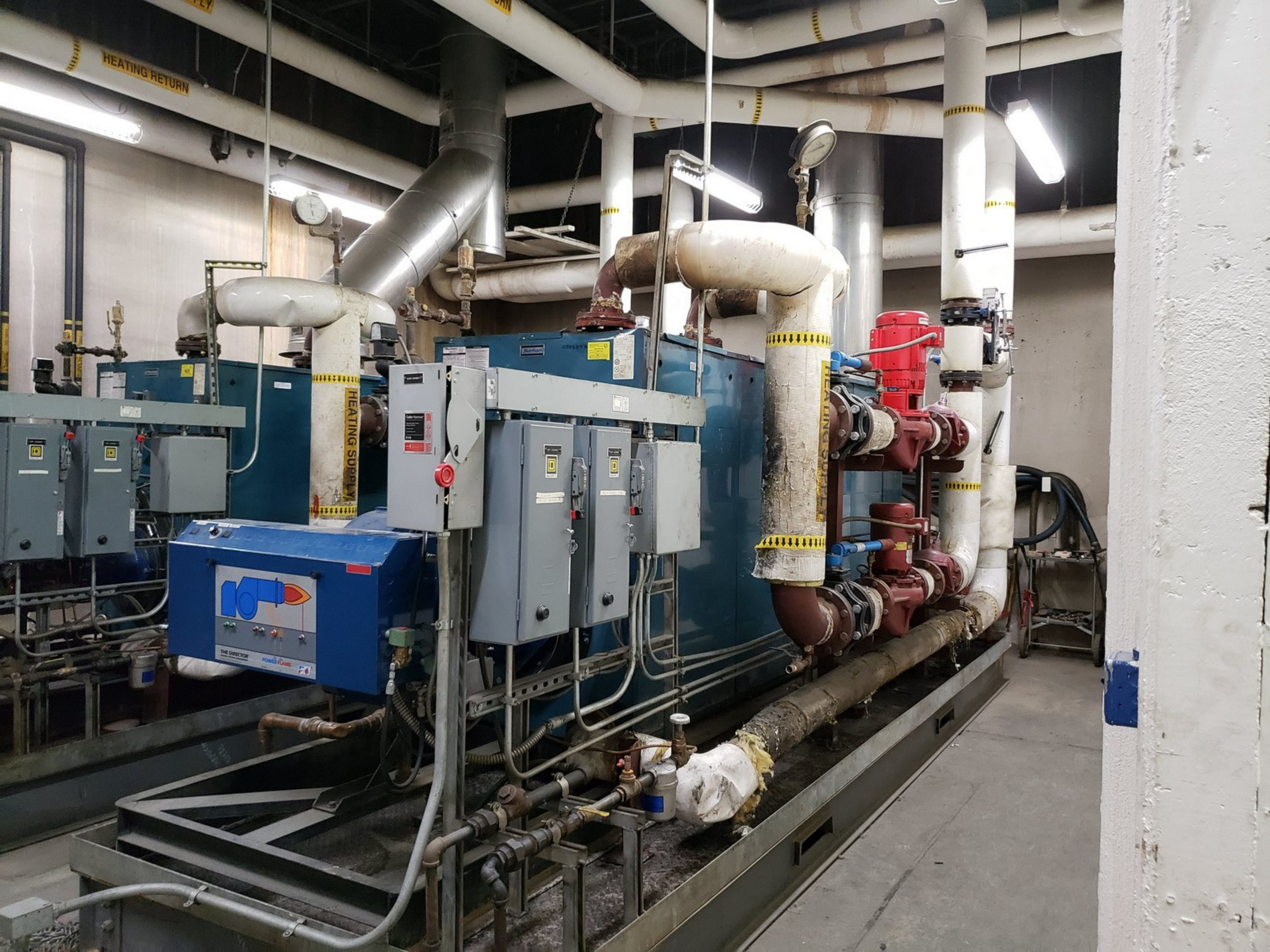


NATHANIEL
OLSON









HEATING RETURN

HEATING SUPPLY

HEATING COIL



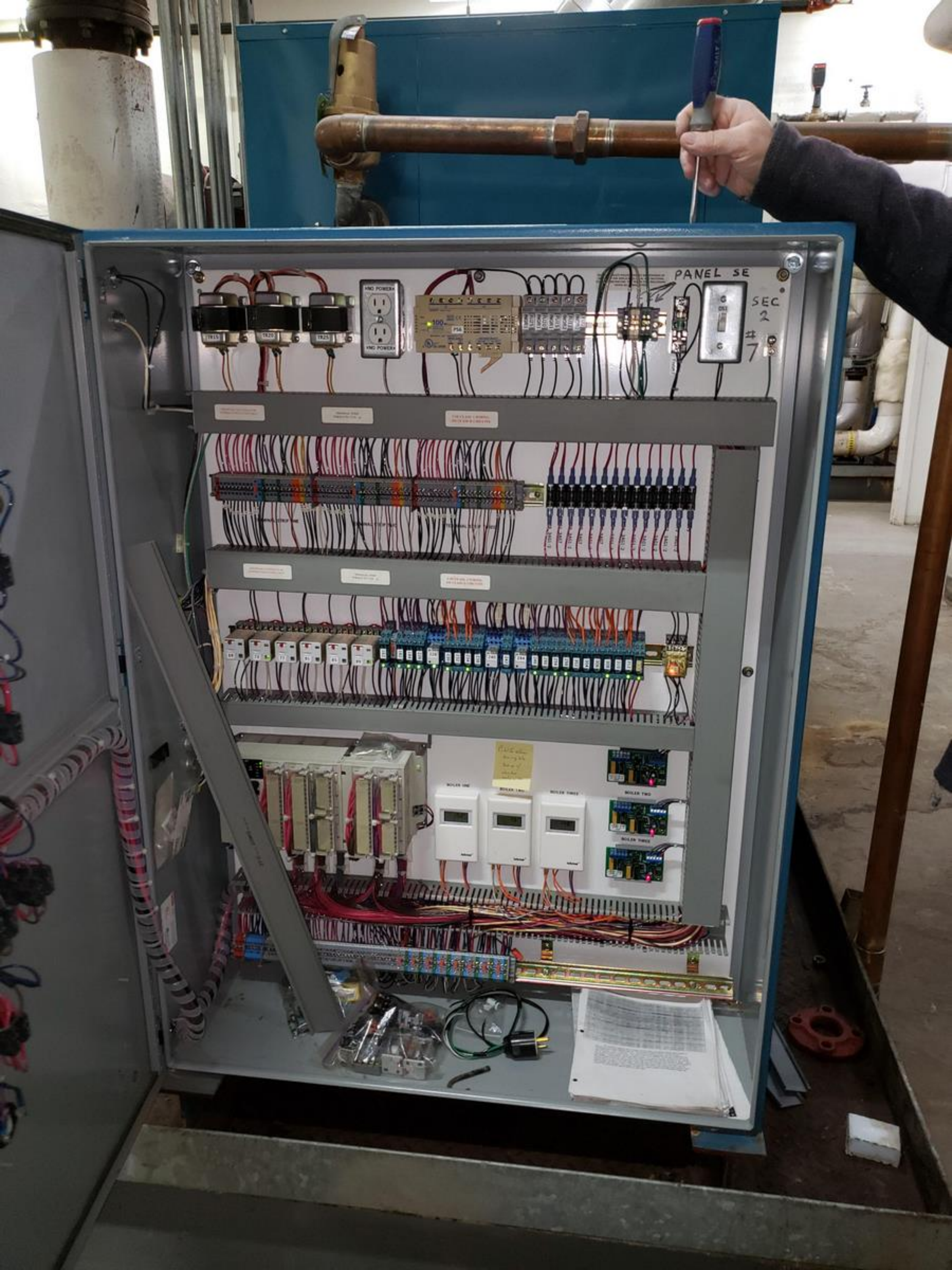
THE DIRECTOR
POWER FLAME



TAILORE

AUXILIARY DRAIN

BELTS
A-71"



To Adjust Fan Motor Speed:
Example: Low limit set point
1) Access "Onboard A/I"
2) Scroll down to low limit set point, should be in upper line item to access.
3) Hit the "MENU" button.
4) Hit the right arrow to select digit that you want to change. Number should be blinking.
5) When number value is updated, hit enter.
6) Repeat to make changes on in PLC screen.
7) Use the "Default" button to return system to original program state is needed.

MECHANICAL SALES INC.
301 EAST 10TH AVE
WYOMING, NE 68190
402-333-1111
SALES@MECHSALES.COM

SEE INVERTING NUMBER
20104037N, T1-8
FOR WINDMILL (P134)

UL Underwriters Laboratories Inc. **UL**
ENCLINED INDUSTRIAL CONTROL PANEL
UL 508 525741

PANEL SUPPLY VOLTAGE
120V AC
FULL LOAD AMPS
CONTROLLED LOAD (Amps)
VOLTS
AMPS
Horsepower

MECHANICAL SALES INC.
301 E. 10TH AVE
WYOMING, NE 68190
402-333-1111
SALES@MECHSALES.COM
11-01-2010 10:00 AM



WINDMILL
P134







4

Discontinue power to the Power Module. Power of Open Processors in Power Module. Power switch may not disconnect all hazardous voltages due to the presence of high voltage I/O modules. Any high voltage I/O modules should incorporate a readily accessible disconnect device within the panel. Couper l'alimentation avant d'installer ou d'installer le module d'alimentation ou les modules I/O universels. L'interrupteur de courant ne peut pas éliminer les tensions sur les modules I/O. Pour les modules I/O, installer un interrupteur facilement accessible.

X1-6

OFF

1 1

MENS

INSTRUCTIONS
AND CONTROL SYSTEM INSTRUCTIONS
FOR ONLY
FIELD CONNECTION ONLY

1. PRECAUTIONS
2. INSTALLATION
3. WIRING
4. TESTING
5. MAINTENANCE

CE

SIEMENS

24VDC

DO 20 DO 21 DO 22 DO 23 DO 24 DO 25 DO 26 DO 27

A TX RUN
B RX FAULT
C TX LOW BATT
D RX CCAM

ETHERNET



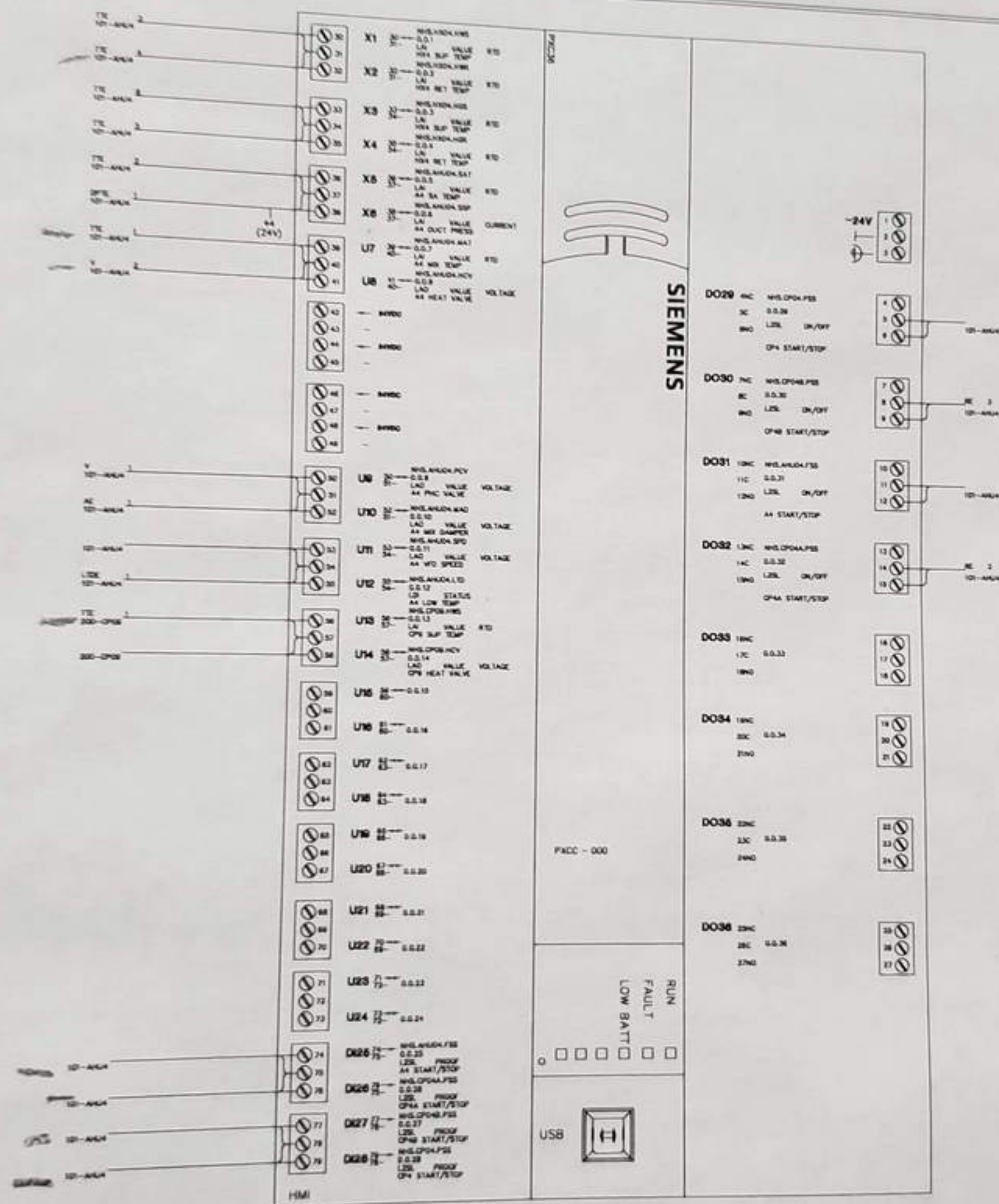
SIEMENS

CP-4A
PANEL X113.5
20AMP, 3P

CP-4B
PANEL X122.24-26
20AMP, 3P

CP-4C
PANEL X1213.25
20AMP, 3P





REVISION HISTORY

SIEMENS

Siemens Industry, Inc.
Building Automation

5333 Fairbanks St.
Suite B
Anchorage, AK 99518
USA
Phone: (907) 563-2242
Fax: (907) 563-6139

Nome HS HVAC Controls Upgrades
Nome, AK

ENGINEER	DRAFTER	CHECKED BY	INITIAL RELEASE	LAST EDIT DATE
KMP	KMP	JRW	06/09/14	06/19/14

NHSNODE02

440P152823

N02

R:\JOBS\ACTIVE\152823_NOME_HS\ENGINEERING\MDT\NHSNODE02.DWG



HX-3

ET-3

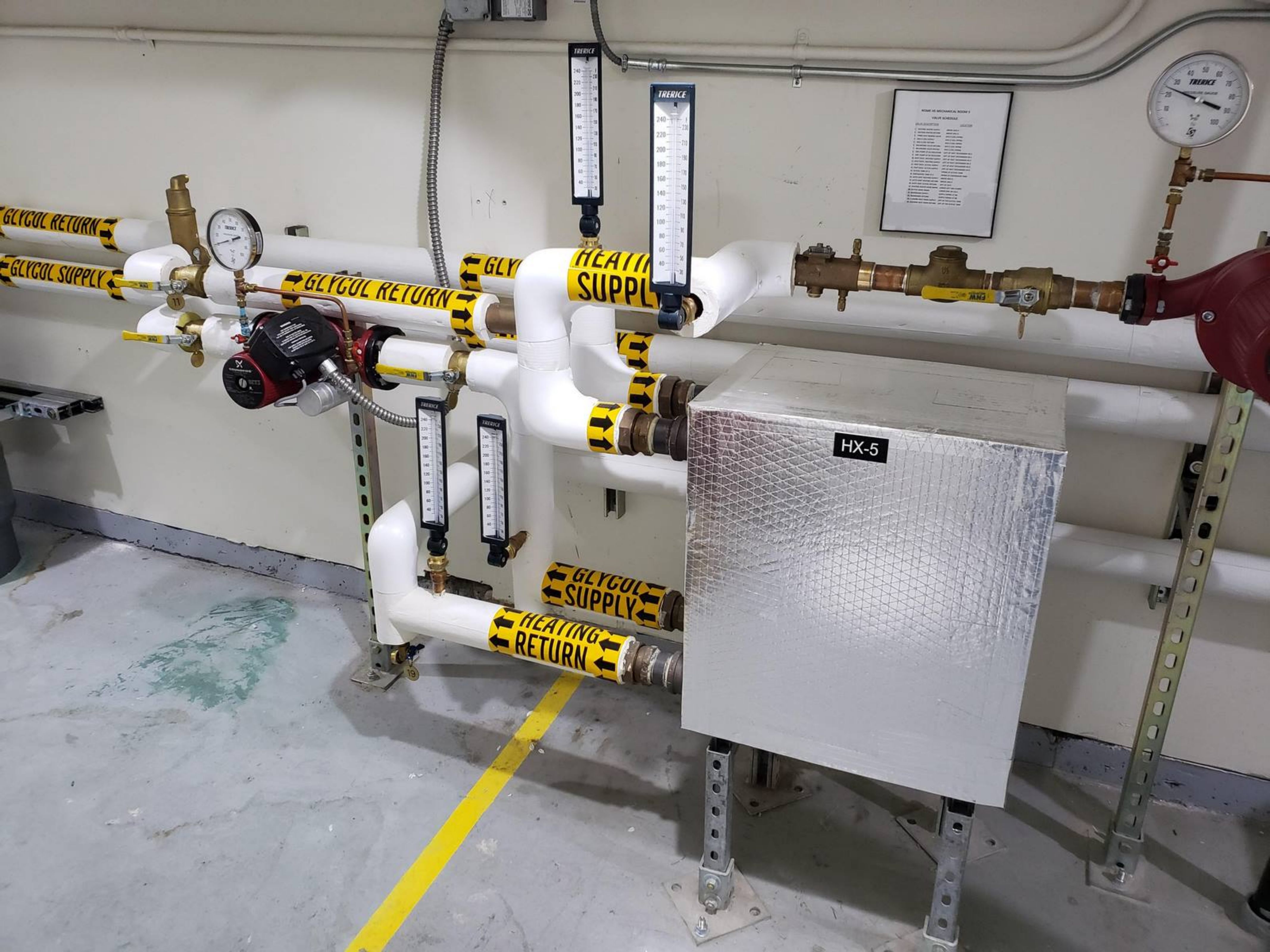
AMTRON



PANEL G
CIR 13





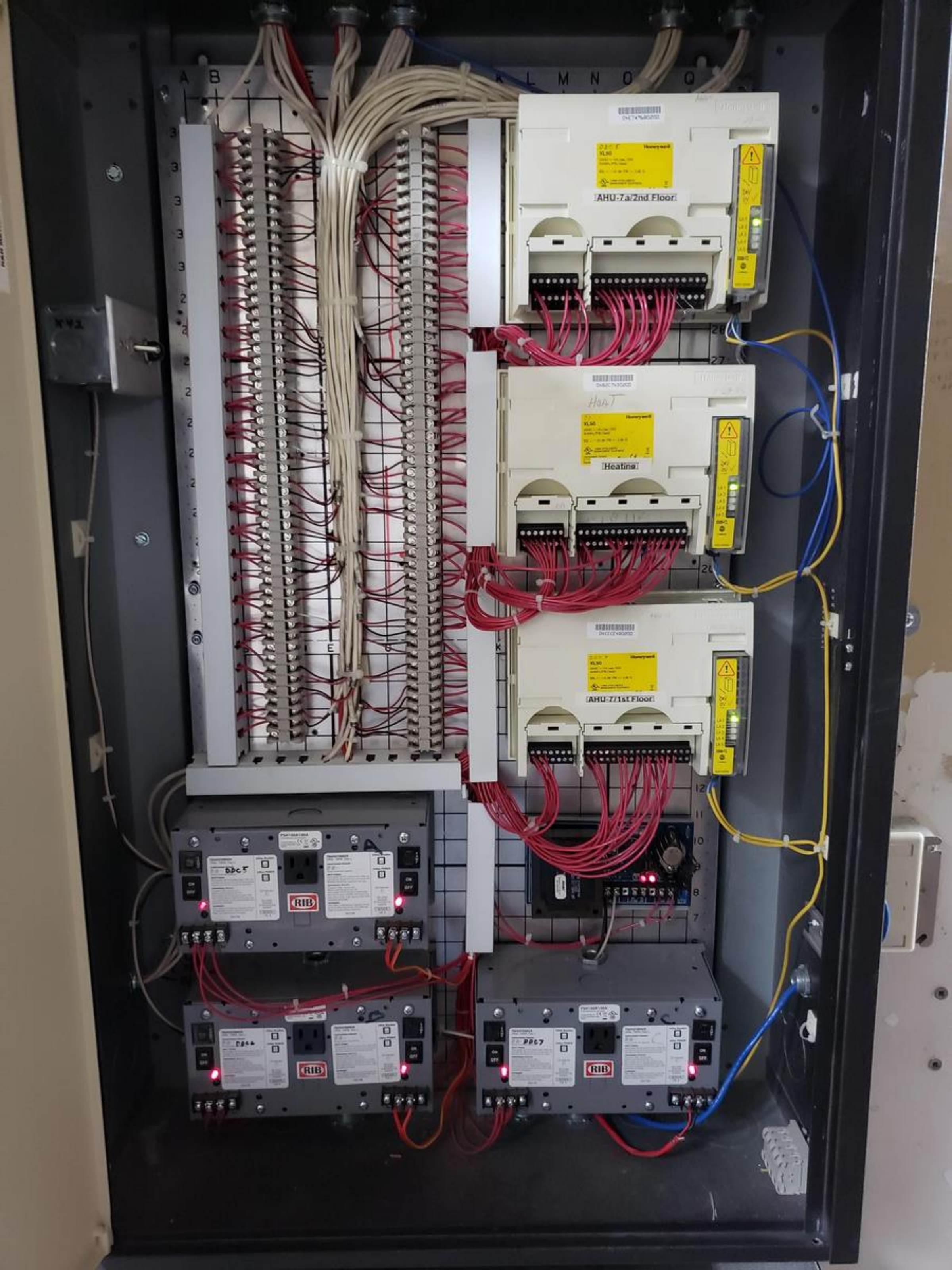


MECHANICAL ROOM 5
VALVE SCHEDULE

VALVE DESCRIPTION	LOCATION
1. Glycol Return Valve	Room 5, near Heat Exchanger
2. Glycol Supply Valve	Room 5, near Heat Exchanger
3. Heating Supply Valve	Room 5, near Heat Exchanger
4. Heating Return Valve	Room 5, near Heat Exchanger
5. Glycol Return Valve	Room 5, near Heat Exchanger
6. Glycol Supply Valve	Room 5, near Heat Exchanger
7. Heating Supply Valve	Room 5, near Heat Exchanger
8. Heating Return Valve	Room 5, near Heat Exchanger
9. Glycol Return Valve	Room 5, near Heat Exchanger
10. Glycol Supply Valve	Room 5, near Heat Exchanger
11. Heating Supply Valve	Room 5, near Heat Exchanger
12. Heating Return Valve	Room 5, near Heat Exchanger
13. Glycol Return Valve	Room 5, near Heat Exchanger
14. Glycol Supply Valve	Room 5, near Heat Exchanger
15. Heating Supply Valve	Room 5, near Heat Exchanger
16. Heating Return Valve	Room 5, near Heat Exchanger
17. Glycol Return Valve	Room 5, near Heat Exchanger
18. Glycol Supply Valve	Room 5, near Heat Exchanger
19. Heating Supply Valve	Room 5, near Heat Exchanger
20. Heating Return Valve	Room 5, near Heat Exchanger

TEC unit 5





Panel with grid coordinates (A-R, 1-16) and mounted components:

- White Honeywell module** (left side, grid approx. C10-D13)
- ECHOLON i.LON 600 LowWorks / IP Server** (right side, grid approx. M11-N13)
- PSH10GA100A Power Supply** (bottom right, grid approx. L7-M10)

Wiring includes blue Ethernet cables and yellow power/data cables connected to the top of the panel.

26 PWT 1628



Honeywell
Digital Wall Module

Module

Quick Start

Using the i.LON 600











GLYCOL

GLYCOL RE

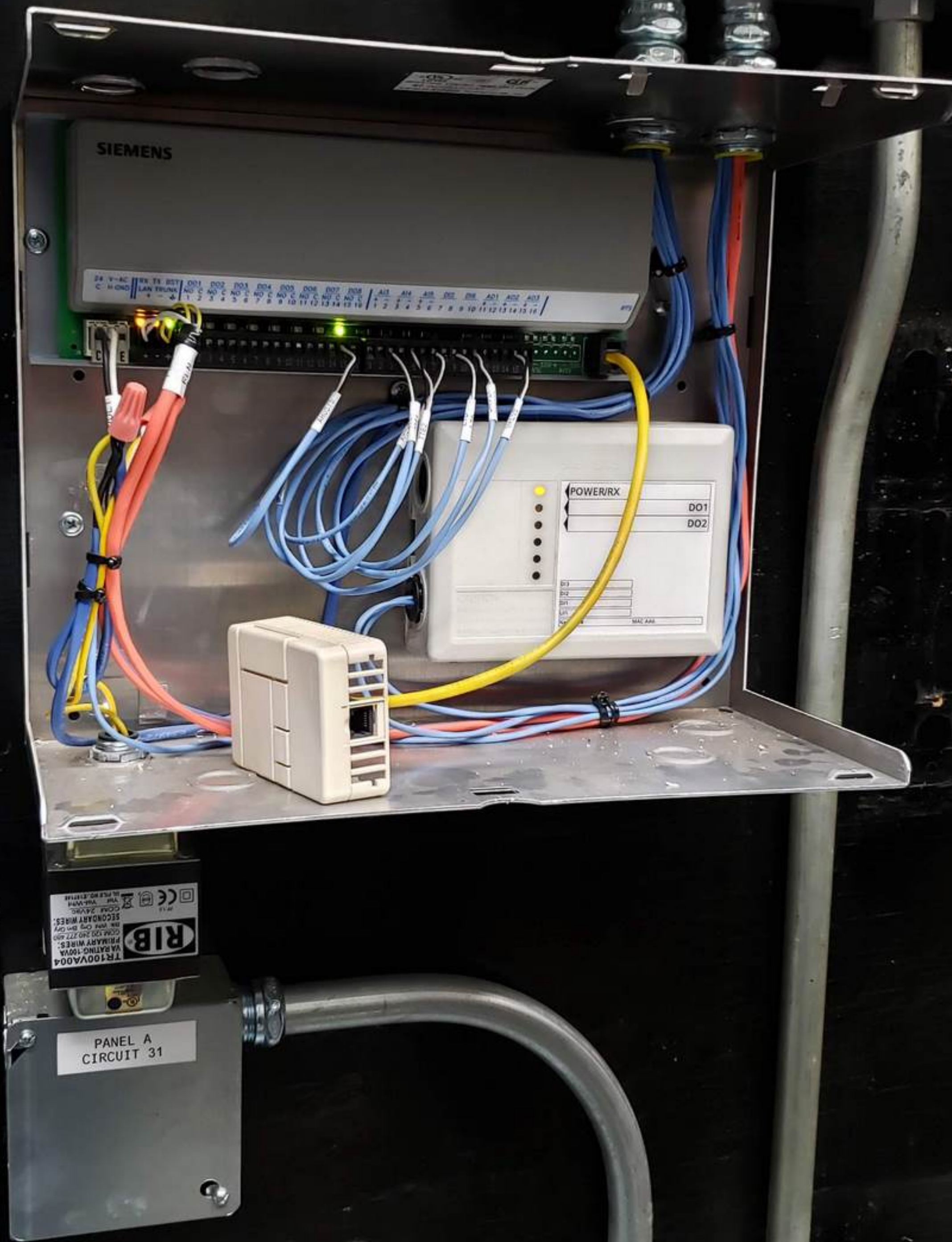
HEATING SUPPLY

HEATING RETURN

CP-6B

CP-6A





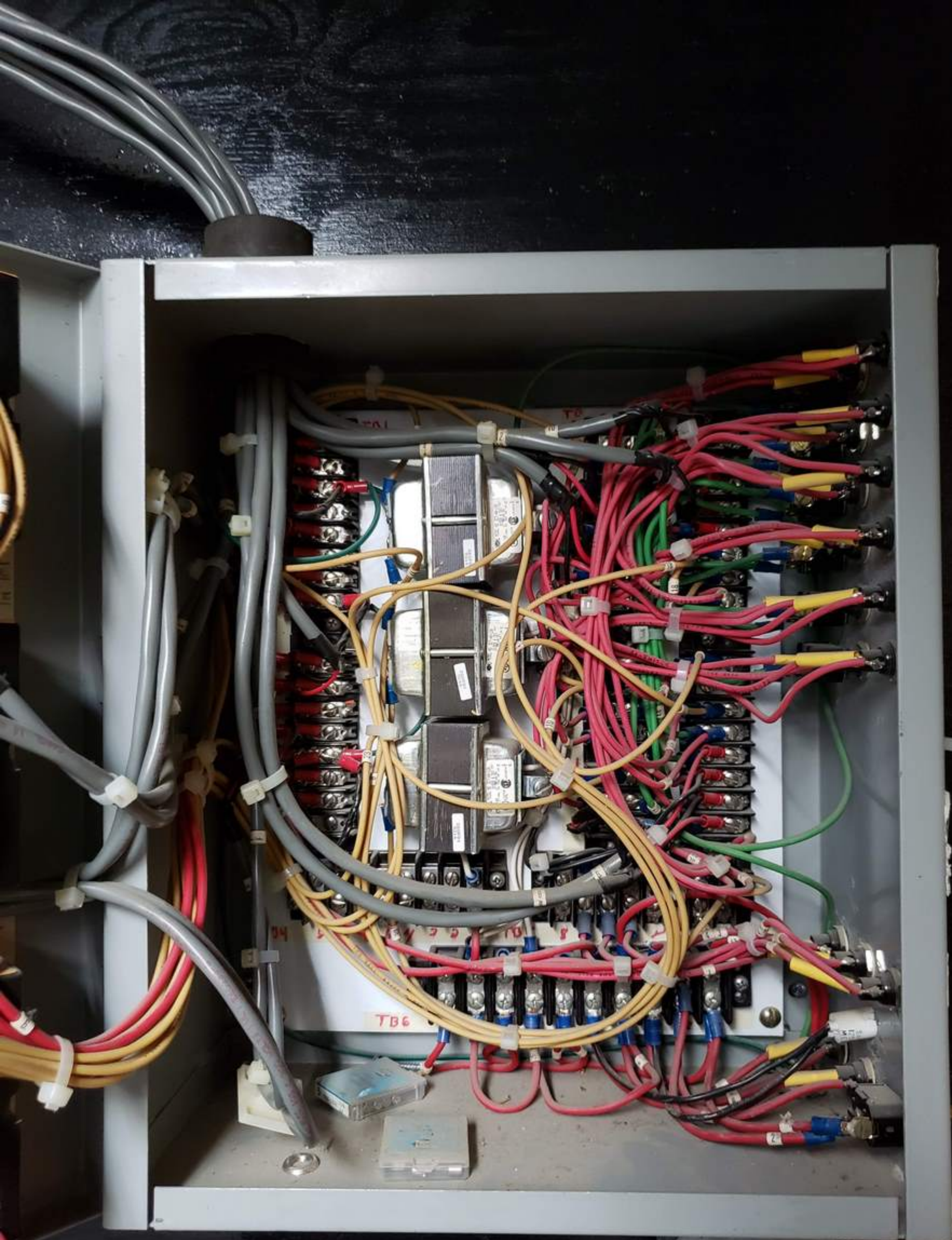
SIEMENS

24 V-AC 100-240V 50/60Hz
C-H-OND LAN TRUNK DO1 DO2 DO3 DO4 DO5 DO6 DO7 DO8
1 2 3 4 5 6 7 8 9 10 11 12 13 14 15 16

POWER/RX
DO1
DO2

RIB
TR100VA004
SECONDARY WIRE
RATING 100VA
PRIMARY WIRE
RATING 250V 0.75A
100-240V 50/60Hz
CE

PANEL A
CIRCUIT 31





VALVE CIRCUIT FUSES

F11 2A F	F17 1A ZNF	Valve OPEN ↔	Valve AUTO
F10 2A E	F16 1A ZNF	S7	1A ZNF
F9 2A D	F15 1A ZNF	SC	1A ZNF
F8 2A C	F14 1A ZNF	S5	1A ZNF
F7 2A B	F13 1A ZNF	S4	1A ZNF
F6 2A A	F12 1A ZNF	S3	1A ZNF
		S2	1A ZNF

WARNING! ALL FUSES MUST BE
SIZE INDICATED
THIS IS A LIMITED POWER DEVICE
EXTERNAL LINES NOT IN
CONDUIT PART WAY

POWER TO HIGHSIDE CONT. TRANS

F3 7-1 2A	F4 7-2 2A	F5 7-3 2A
LT1	Run	1A
OFF ↔ ON	NI	1A
PWR	F1	F2
S1	MAIN PWR	POWER TO CONTROLLERS SENSORS - FUSES

RADIATION CONTROL W/ ROOM TEMP. INDICATION : CONTROL
STATUS INDICATION



C-1
10



C-D
104



C-E
105



C-E
106

DIAL LED'S = ROOM TEMP
GMH = IN CONTROL RO = OUT OF CONTROL



C-1
10



CF
107

GREEN LT = UNPOWERED = FLOW / No Lt = POWERED = NO FLOW











HEATING RETURN

HOT WATER SUPPLY

HOT WATER RETURN

HEATING SUPPLY

RETURN

DOMESTIC HOT WATER SUPPLY

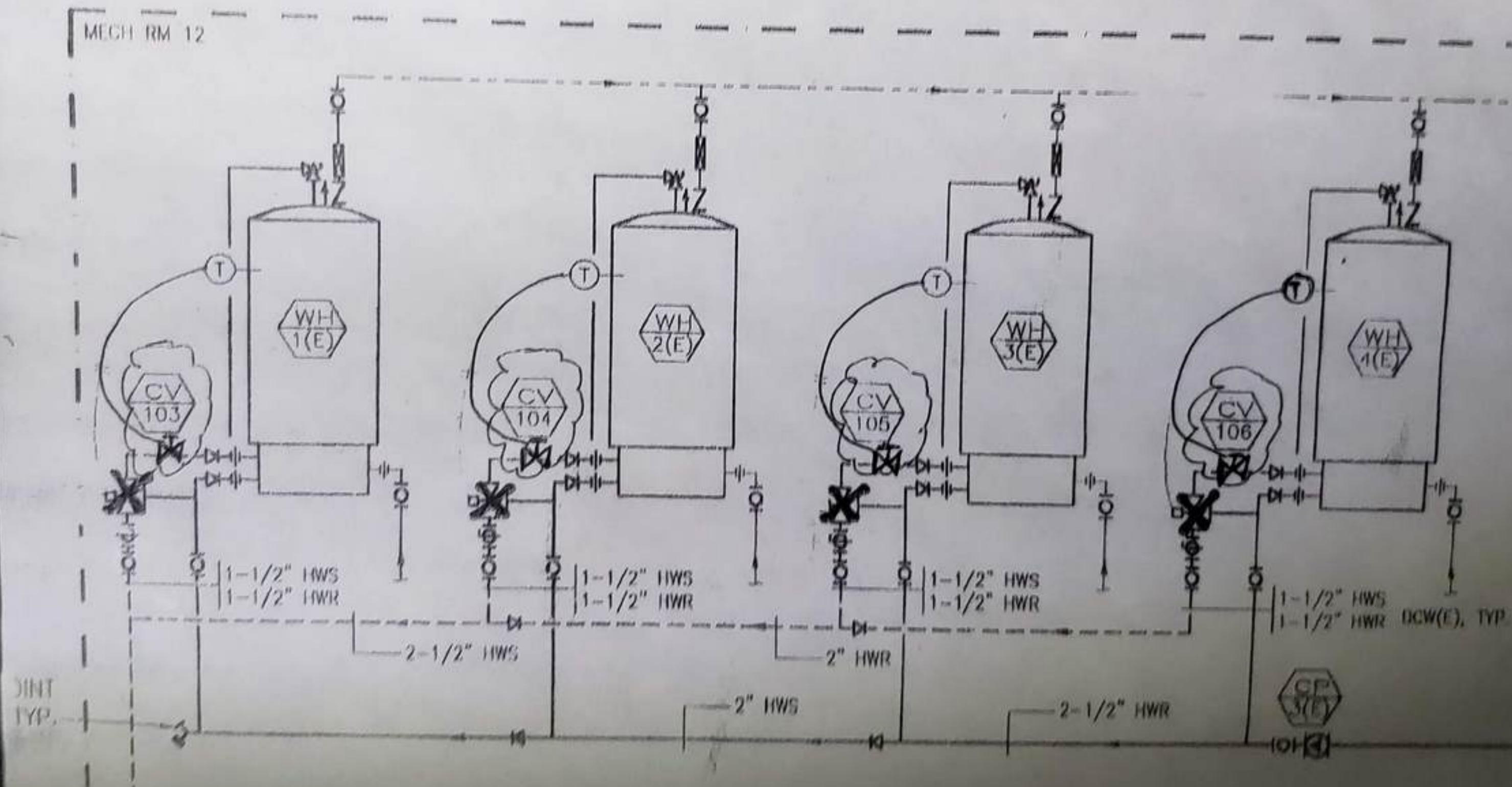
WATER

BOILER MATI
PREMIUM SERIES
By AMIG

#4

MECHANICAL ROOM 12

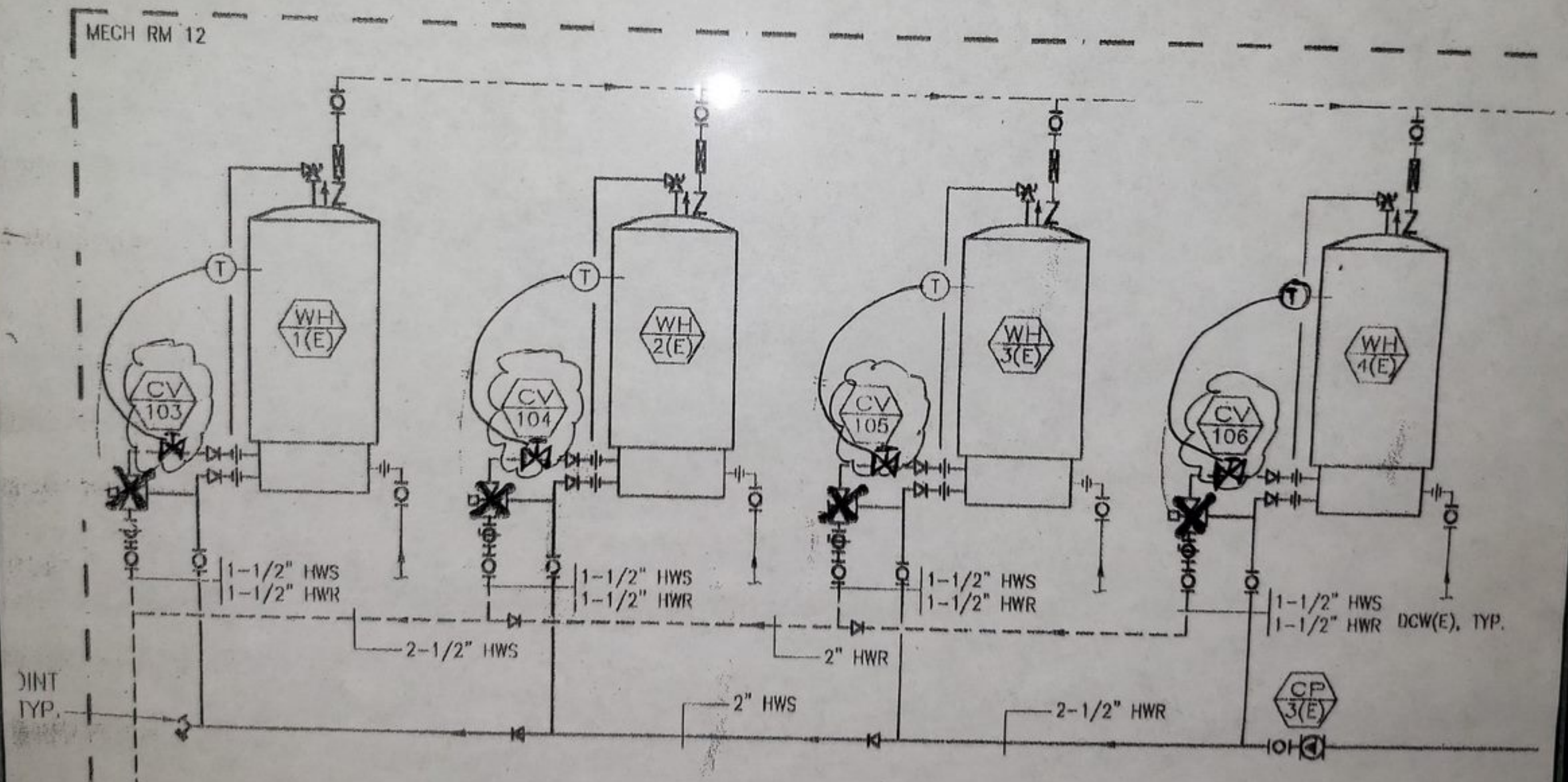
Function	Type	Position	Tag No.	Line Size
Domestic HW Supply	Control Valve 2 way	Modulating	CV 103	1"
Domestic HW Supply	Control Valve 2 way	Modulating	CV 104	1"
Domestic HW Supply	Control Valve 2 way	Modulating	CV 105	1"
Domestic HW Supply	Control Valve 2 way	Modulating	CV 106	1"



#4

MECHANICAL ROOM 12

Function	Type	Position	Tag No.	Line Size
Domestic HW Supply	Control Valve 2 way	Modulating	CV 103	1"
Domestic HW Supply	Control Valve 2 way	Modulating	CV 104	1"
Domestic HW Supply	Control Valve 2 way	Modulating	CV 105	1"
Domestic HW Supply	Control Valve 2 way	Modulating	CV 106	1"





DDCP-1

Honeywell

SF-1

Honeywell

DDC-1

SF-1

WPC

DATA

ALWAYS

END

END

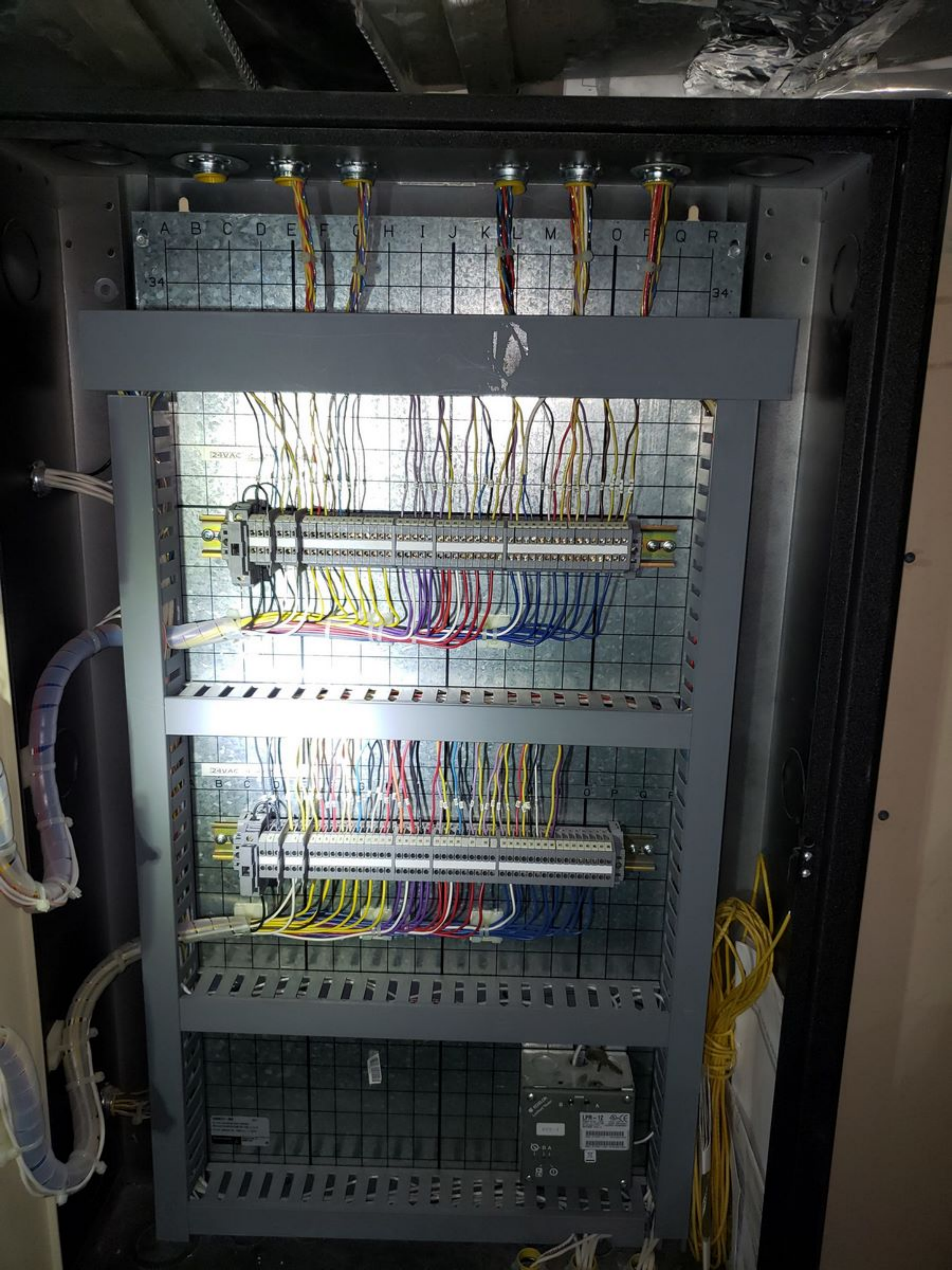
Honeywell

DDC-2

SF-2



Small text label at the bottom left corner.



2/8/15 - RSCD - 2110
4/15/15 - RSCD - 2110

3333

Synovate Inc.
James H. Morgan
VLT 1511000001
Automation and Control
System Integrators
1000 W. 10th St.
Tulsa, OK 74103
918.591.1000
www.synovateinc.com

Med valve actuator
4V SV-2 4/10/16
+ 3F 140 coil



Honeywell
Excel 50

The Honeywell Excel 50 unit is shown with its wiring connections. The unit has two terminal blocks on the front. The top terminal block is connected to the bottom terminal block. The wiring is color-coded: yellow, red, blue, and green. The unit has a warning symbol and the text 'CAUTION: High Voltage'.

Honeywell
Excel 50

The Honeywell Excel 50 unit is shown with its wiring connections. The unit has two terminal blocks on the front. The top terminal block is connected to the bottom terminal block. The wiring is color-coded: yellow, red, blue, and green. The unit has a warning symbol and the text 'CAUTION: High Voltage'.





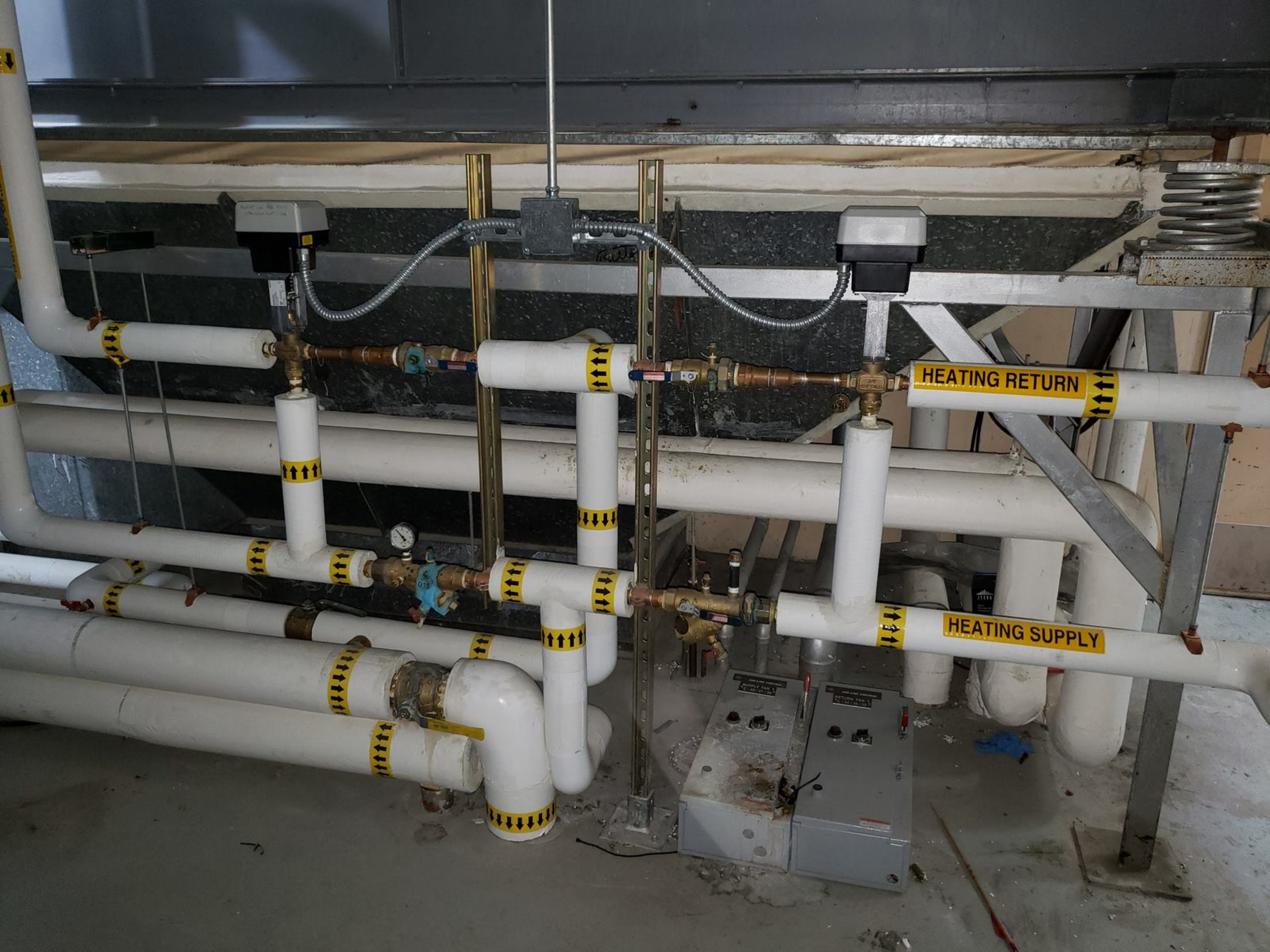
↑↑↑↑

RETURN

HE

TEMPERATURE

60
65
70
75
80
85
90
95
100
105
110
115
120
125
130
135
140
145
150
155
160
165
170
175
180
185
190
195
200



HEATING RETURN

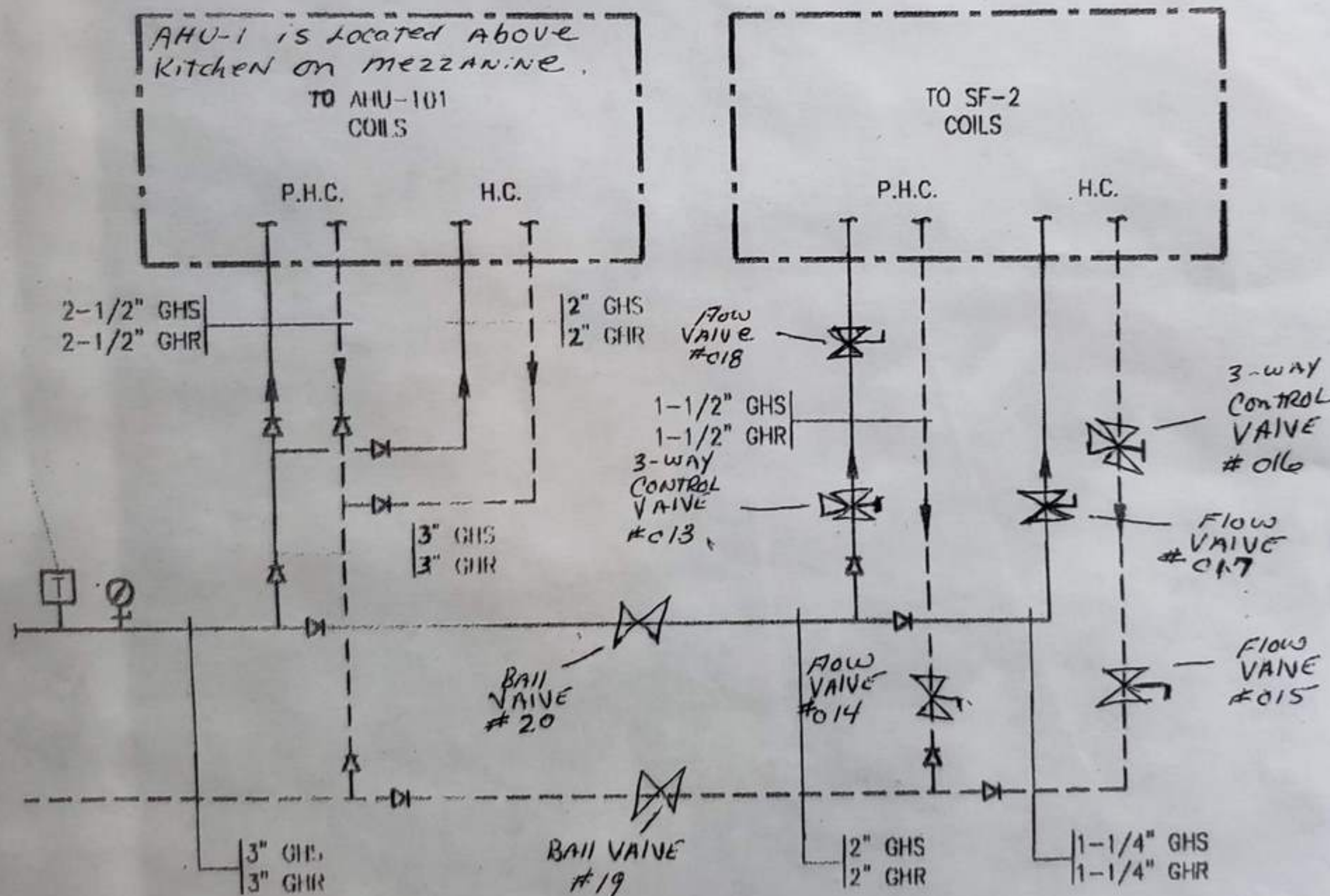
HEATING SUPPLY

SUPPLY FAN 1

RETURN FAN 1

MECHANICAL ROOM 201 SF-2

Function	Type	Position	Tag No.	Line Size
Glycol Heat Supply P.H.C.	3-Way Control Valve	Modulating	013	1 1/2"
Glycol Heat Supply P.H.C.	3-Way Control Valve	Modulating	016	1 1/2"
Glycol Heat Supply P.H.C.	Flow Valve	Open	018	1 1/4"
Glycol Heat Return P.H.C.	Flow Valve	Open	014	1 1/4"
Glycol Heat Supply H.C.	Flow Valve	Open	017	1 1/4"
Glycol Heat Return H.C.	Flow Valve	Open	015	1 1/4"
Glycol Heat Supply	Ball Valve	Open	020	3"
Glycol Heat Return	Ball Valve	Open	019	3"



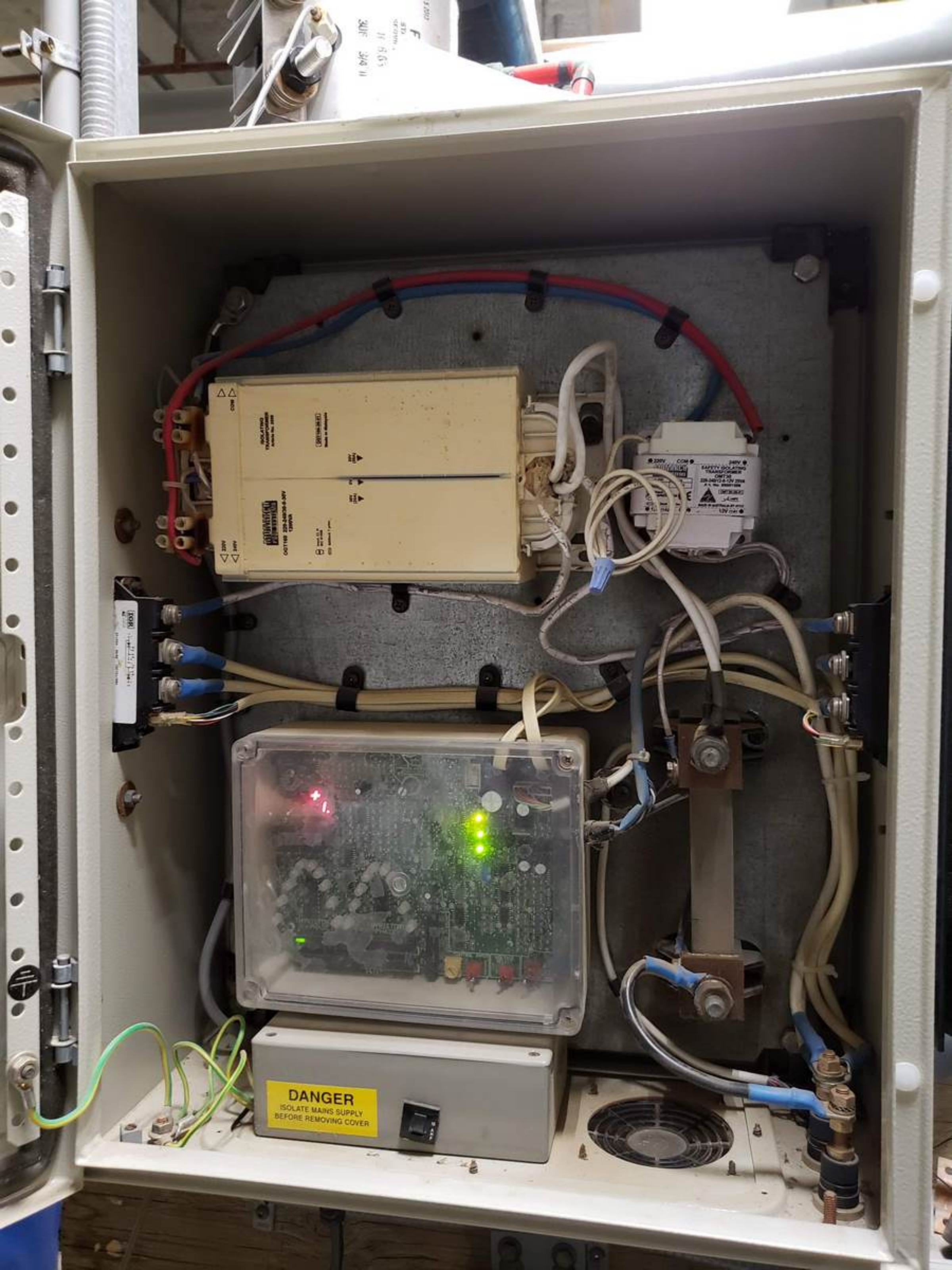
ROMAC
STANDARD SEAL
SERVICE SAUCE
H-B-63
306 3/4" IP

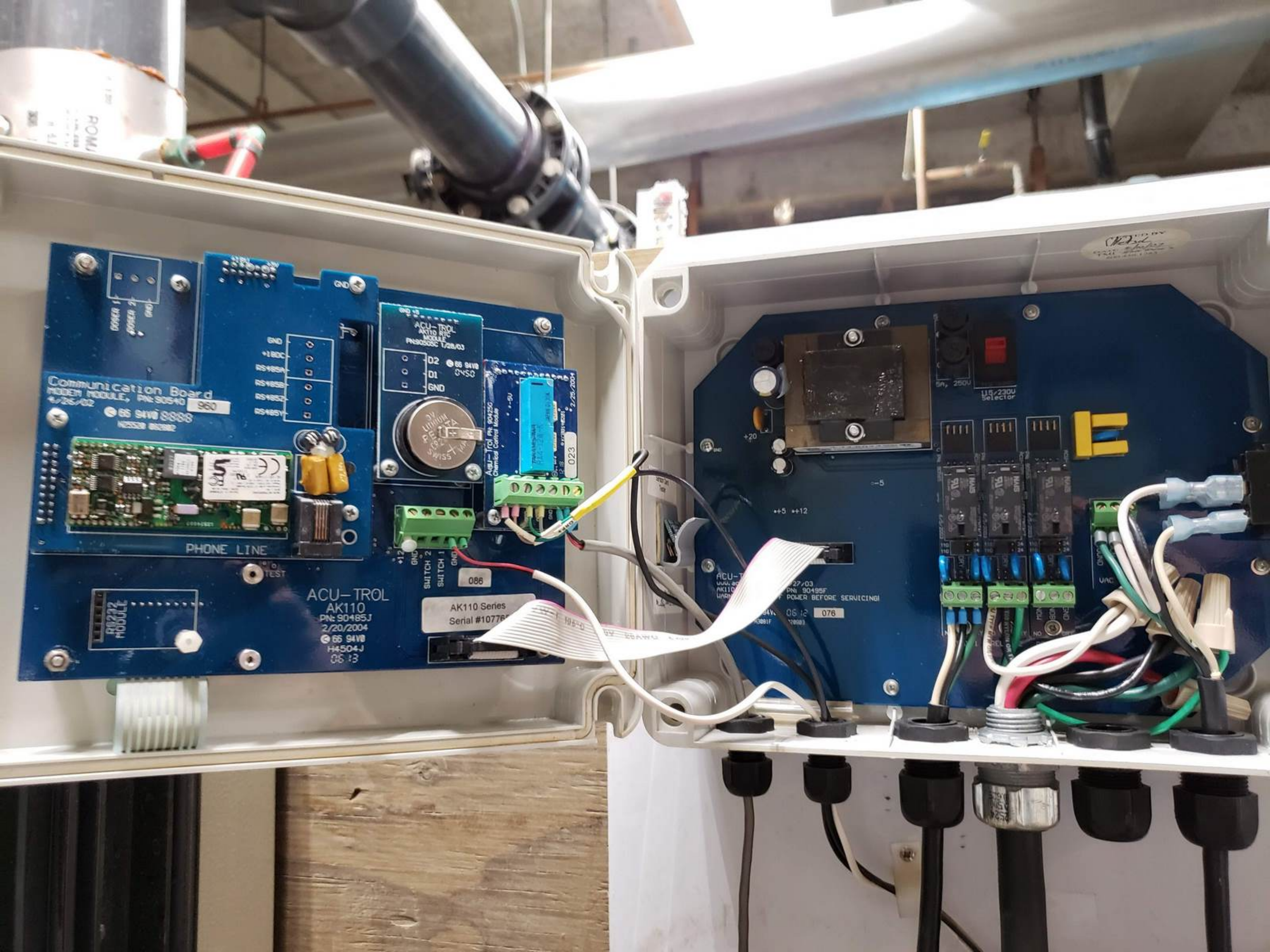
Power Supply

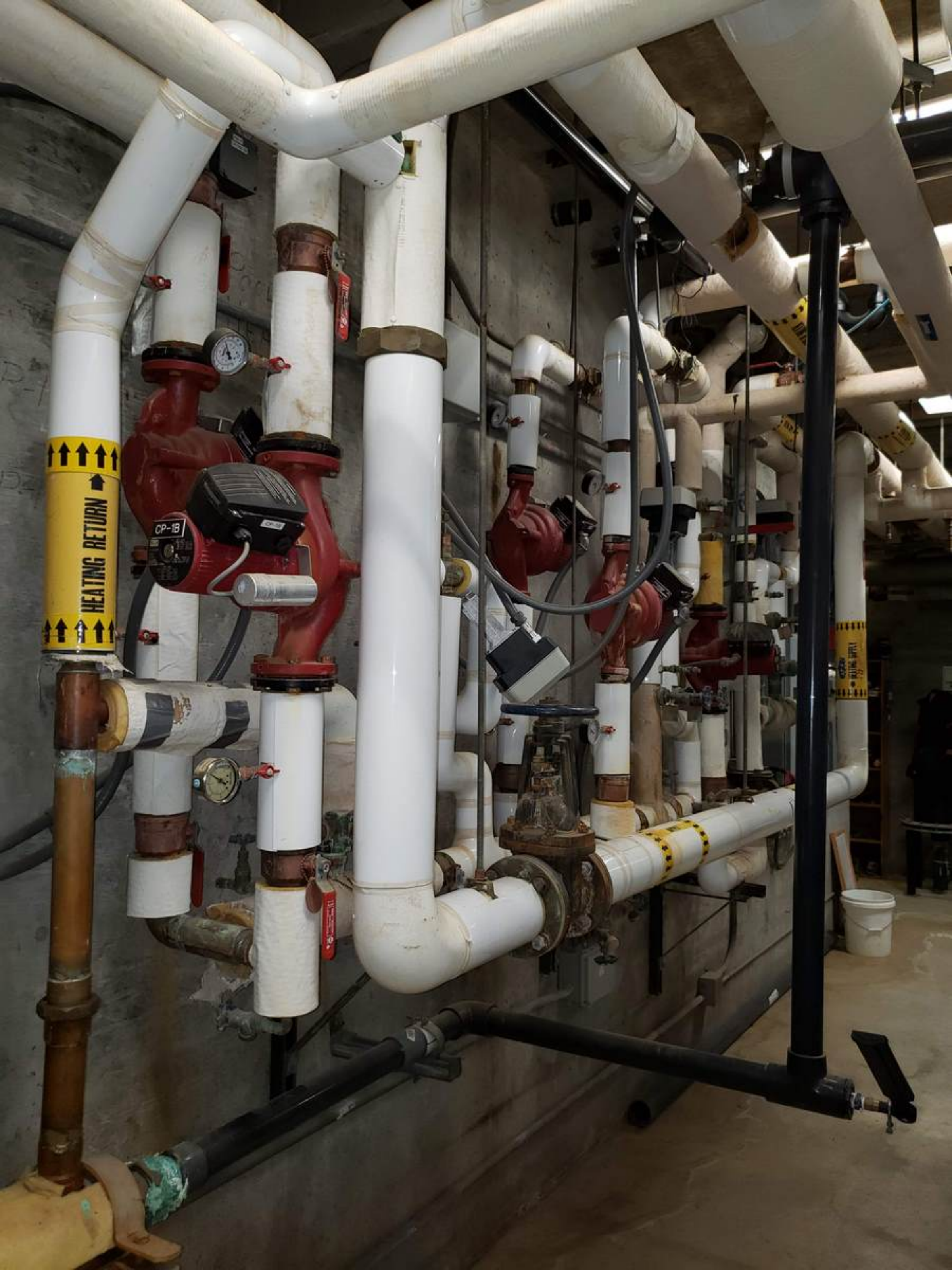


 **TMI Salt Pure® Systems**
www.tmisaltpure.com
(800) 456-1285









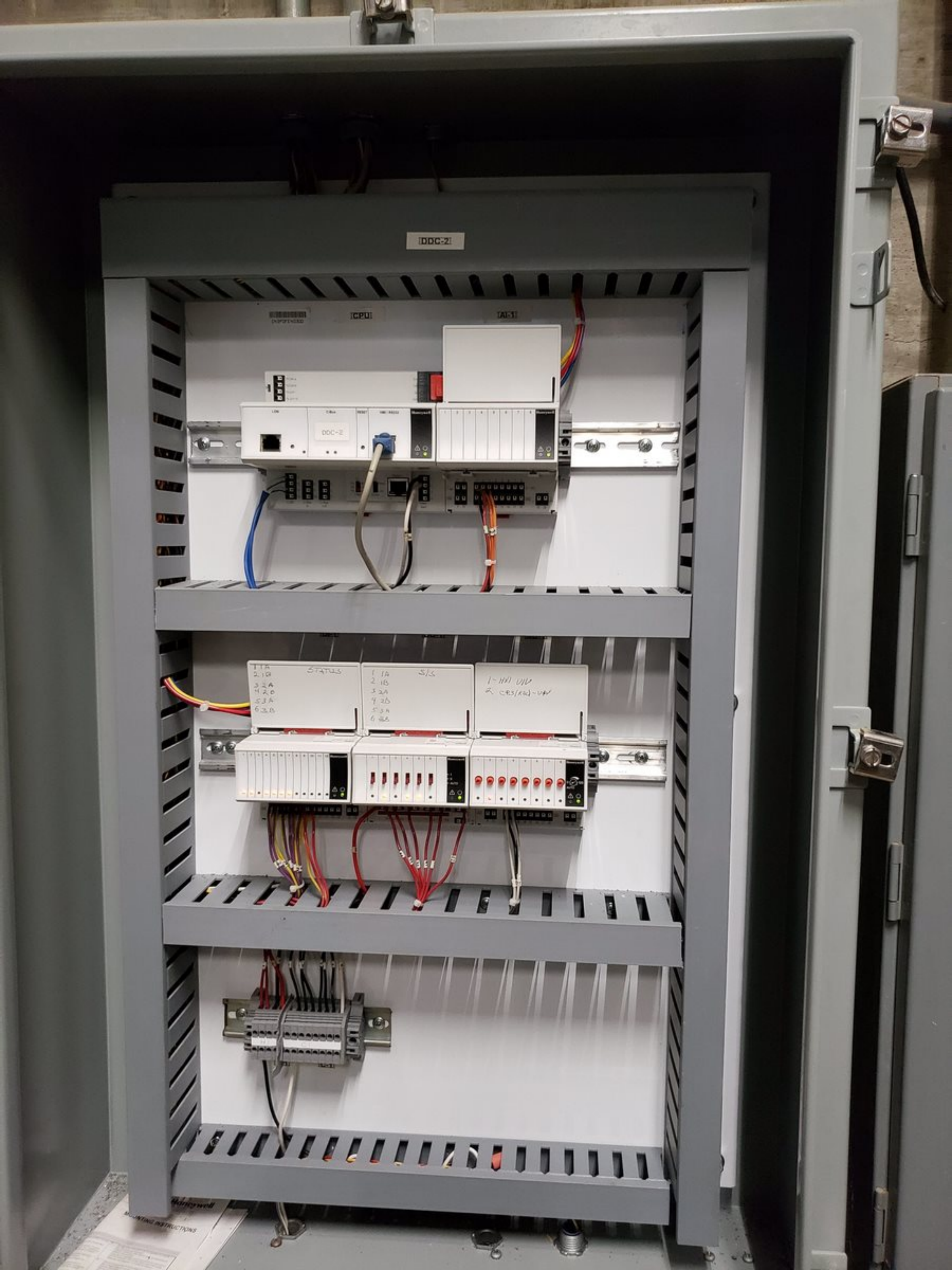
DECK
DRAINS

RISE PIPE FEEDS
DRAIN WELL BELOW
PARKING LOT
↓

SKIMMED







DDC-2

CPU

AI-1

DDC-2

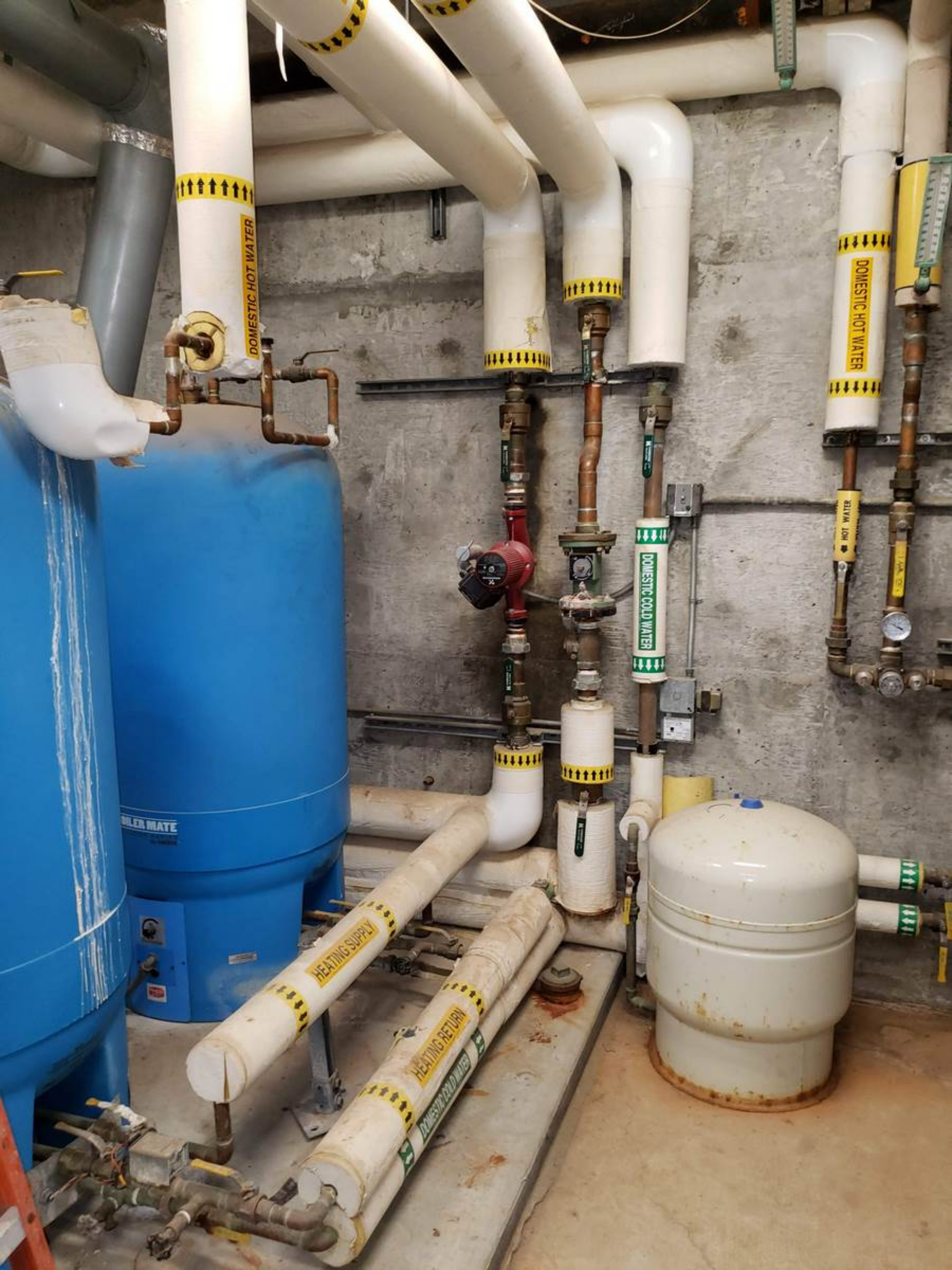
STATUS
1. 1A
2. 1B
3. 2A
4. 2B
5. 3A
6. 3B

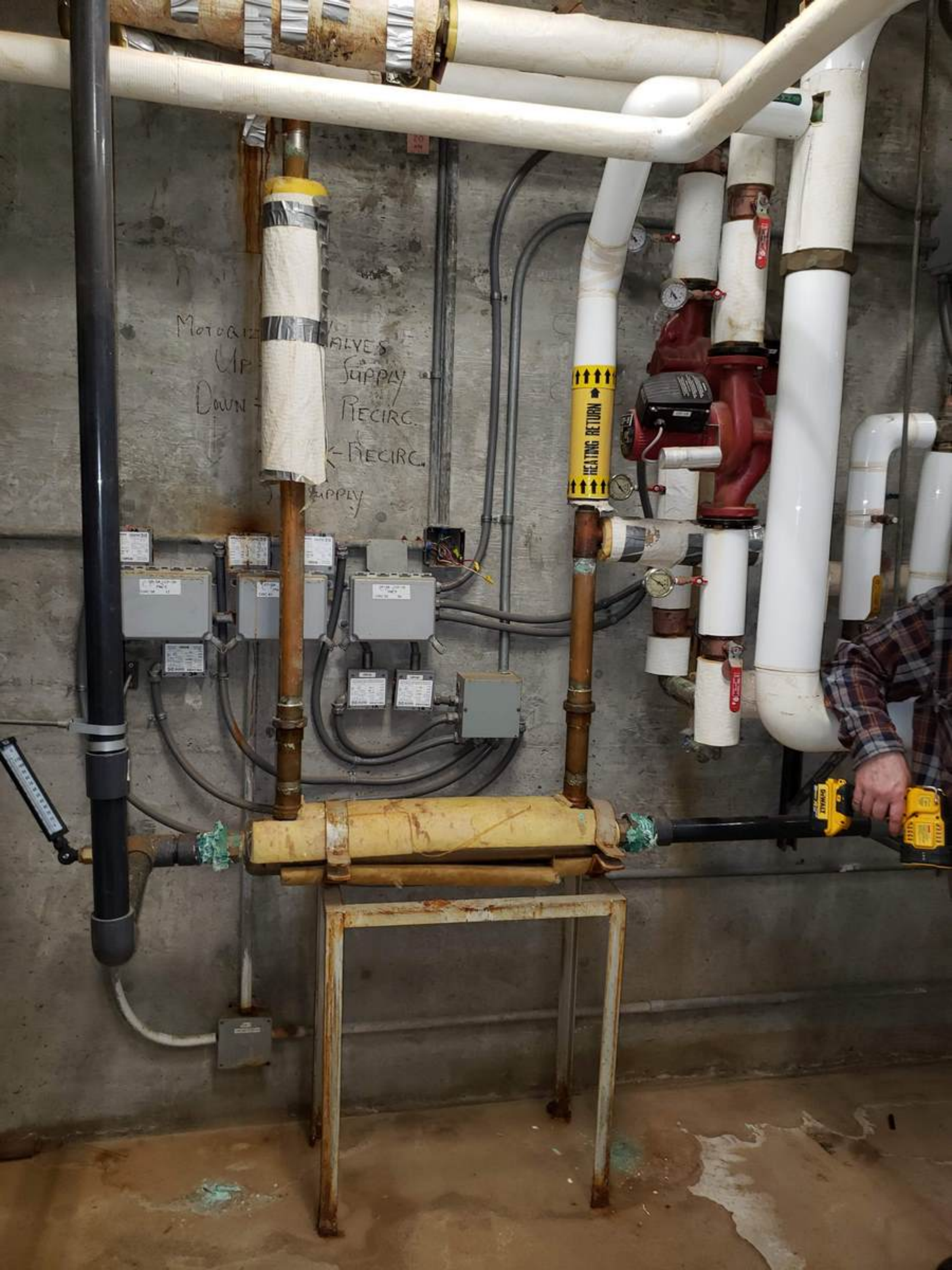
S/S
1. 1A
2. 1B
3. 2A
4. 2B
5. 3A
6. 3B

1-HV V/P
2. C/S/1A-V/P

INSTALLATION INSTRUCTIONS







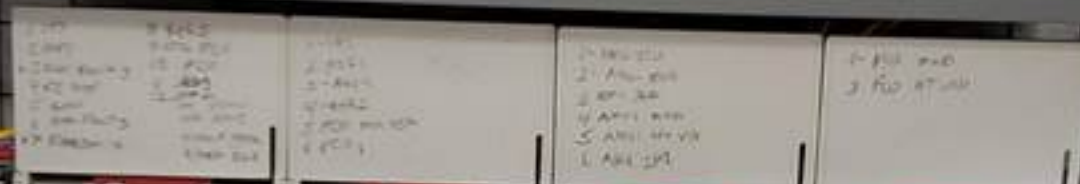
MOTORIZE
UP
DOWN
VALVES
SUPPLY
RECIRC.
← RECIRC.
SUPPLY

HEATING RETURN

DDG-1

CPU-1

DDG-1



PSH-1

PK-2

PNL F
CKT#87

PSH-1

PK-1

PK-2

DDG in phase
100 Hz control





HEATING COIL

Filter Fingers
12x24x12 x 5ea
34x24x12 x 10ea

HEATING RETURN

HEATING UNIT 1





DDCP-1

This device complies with Part 15 of the FCC rules. Operation is subject to the condition that this device does not cause harmful interference. If this device is found to cause interference, which may be determined by turning the device off and on, the user is advised to consult the dealer or a qualified technician for assistance.

Handwritten note on a piece of paper attached to the bottom left of the panel:

WUG in phase
from the center



