

EQUIPMENT

High School

SF-1 Gym Fan System
SF-2 Gym Locker Rooms
SF-2 Re-Heat Zones
AHU-101 Cafeteria Fan System
AHU-101 VAV Zones
Heating Systems High School
Kitchen
Exhaust Fans
Domestic Hot Water
Monitored Systems

Hi School Zones

Radiant Floor Heating Zones
Radiant Panel Heating Zones
Unit Heater Zones

Junior High

Heating Systems - Junior High
AHU-7 Fan System
AHU-7a Fan System
JH Zones

FLOOR PLANS

Main Floor Plan
Gym Floor Plan
Cafeteria Floor Plan

Nome Jr. / Sr. High SCHOOL

Nome School District



SystemsHOUSE, Inc.
2013



SF-1 Gym Air Handling Unit



34.8

Gym Temp

70.4 °F

RA Temp
71.0 °F

Mixed Air Dampers
0.0 %

RA CO2 Level
Co2

Exhaust Air Damper
0.0 %

Speed Signal
0 Hz
RF-1
0.0 %

Return Air

RF-1

DA-2 Temp

0.0 °C
69.1 °F

Discharge Air

0.0 %
% Open

Discharge Air

80.0 °F
0.0 °C
DA-1 Temp

0.0 %
% Open

Outside Air
Main Outside Air Damper

To SF-2

Low Psi Safety

0 Hz

Speed Signal
0.0 %

SF-1

Main Menu

Back

Points

Occupied OverRide Mode

Off

Event OverRide Mode

Off

Gym OverRide Modes
Enabled By Wall Timers

Occ OverRide Mode Speed

75.0 %

Event OverRide Mode Speed

100.0 %

05-Nov-19 00:30:01 EXCEL5000 DDC3 Time dev.> 2 min U 00 Cafeteria Panel

Honeywell SymmetrE R410.2

06-Nov-19

08:46:30

Alarm

System

nomehisrvr

Str01

SF-1 Gym Air Handling Unit



34.8

Gym Temp

70.4 °F

RA Temp
71.0 °F

Mixed Air Dampers
0.0 %

RA CO2 Level
Co2

Exhaust Air Damper
0.0 %

RF-1

Speed Signal
0.0 %

Return Air

RF-1

DA-2 Temp

0.0 °C
69.1 °F

Discharge Air

0.0 %
% Open

Discharge Air

80.0 °F

0.0 °C
DA-1 Temp

0.0 %
% Open

Outside Air

Main Outside Air Damper

To SF-2

Low Psi Safety

0 Hz

Speed Signal

0.0 %

SF-1

Occ OverRide Mode Speed

75.0 %

Event OverRide Mode Speed

100.0 %

Main Menu

Back

Points

Occupied OverRide Mode

Off

Event OverRide Mode

Off

Gym OverRide Modes
Enabled By Wall Timers

05-Nov-19 00:30:01 EXCEL5000 DDC3 Time dev.> 2 min U 00 Cafeteria Panel

Honeywell SymmetrE R410.2

06-Nov-19

08:46:30

Alarm

System

nomehisrvr

Stn01



34.8

SF-2 Gym Rooms Air Handling

Room
Temps

32.0 °F

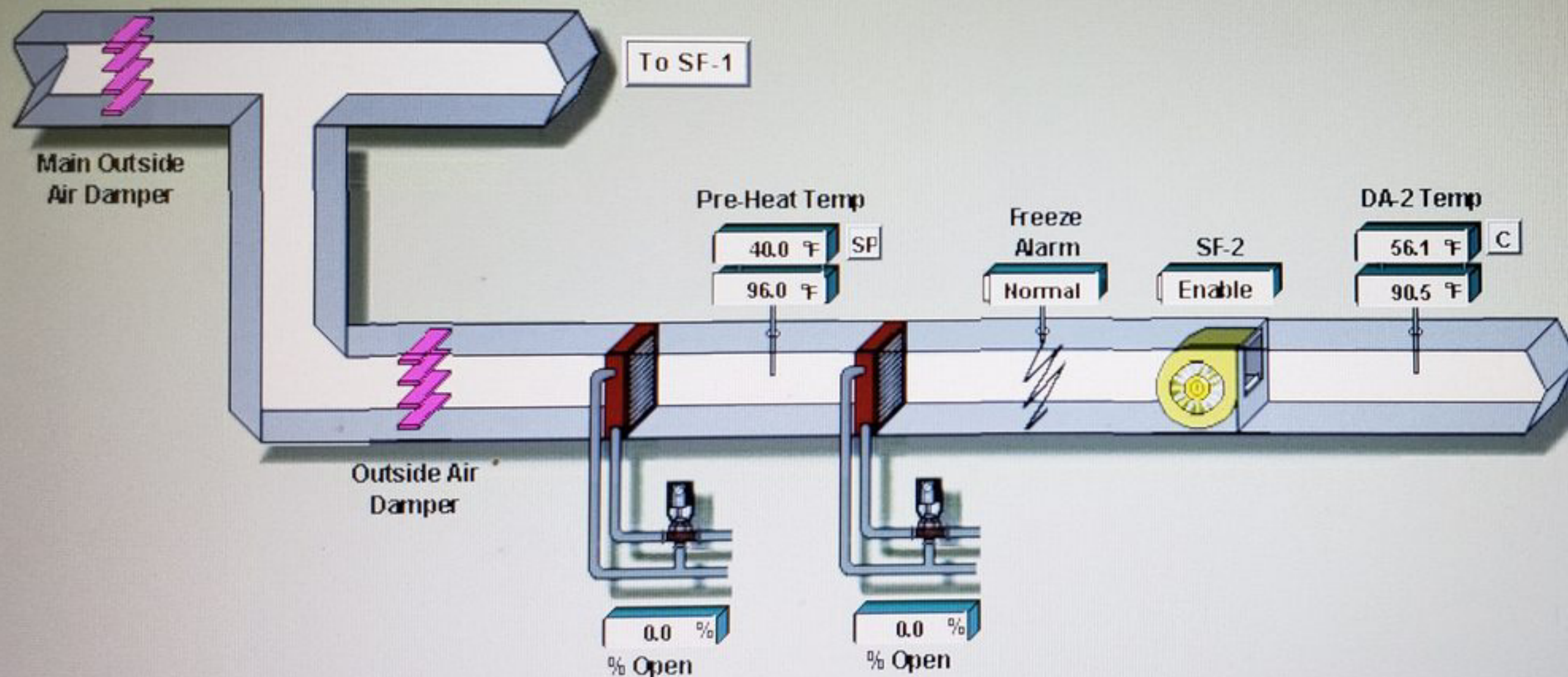
Lowest Temp

79.0 °F

Highest Temp

66.7 °F

Avg Temp



Main Menu

Points

Back

Heat Zones

Exh Fans

05-Nov-19 00:30:01 EXCEL5000 DDC3 Time dev.> 2 min U 00 Cafeteria Panel

SF-2 / Terminal Box Heating Zones



34.77

TBC-1 / RM131 - Locker Room		0.0	SF	0.0	RHC VlvPos = 0.0	Rad Panel VlvPos = 0.0
TBC-2 / RM121 - Weight Room		0.0	SF	0.0	RHC VlvPos = 0.0	Rad Panel VlvPos = 0.0
TBC-3 / RM130 - Locker Room		0.0	SF	0.0	RHC VlvPos = 0.0	Rad Panel VlvPos = 0.0
HYD-1 / RM123 - Gym Office		0.0	SF	0.0	RHC VlvPos = 0.0	N/A

Room 131

Room 121

Room 130

Room 123

Main Menu

SF-2

Back

05-Nov-19 00:30:01 EXCEL5000 DDC3 Time dev.> 2 min U 00 Cafeteria Panel

Honeywell SymmetrE R410.2

06-Nov-19

08:47:30

Alarm

System

nomehisrvr

Stn01



RM131 / Locker Room

OAT
34.77



0.0
% Open

Room
Temperature
0.0
Set Point



0.0
% Open

Operational Data

Occupied Mode	
Operational Mode	

Main Menu

SF-2

Back

05-Nov-19 00:30:01 EXCEL5000 DDC3 Time dev.> 2 min U 00 Cafeteria Panel

nomehisrvr

Stn01

Honeywell SymmetrE R410.2

06-Nov-19

08:48:00

Alarm

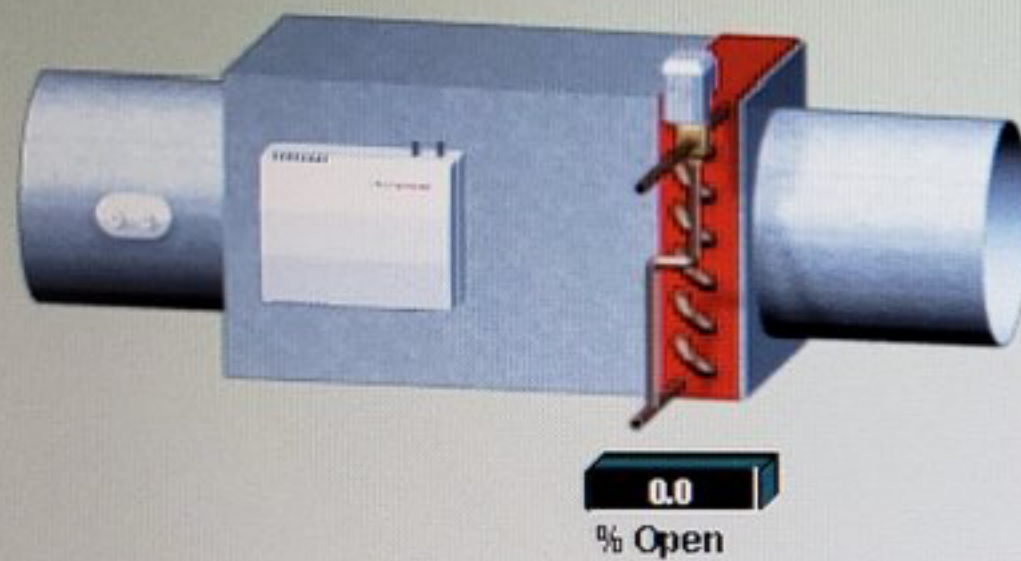
System



DELL

RM121 / Weight Room

OAT
34.77



Room
Temperature
0.0
Set Point



0.0
% Open

Operational Data

Occupied Mode	
Operational Mode	

Main Menu

SF-2

Back

06-Nov-19 08:48:17 LONWORKS LONWORKS COMMS U 00 Data connection to LONWORKS UNAVAILABLE

Honeywell SymmetrE R410.2

06-Nov-19

08:48:20

Alarm

System

nomehisrvr

Stn01

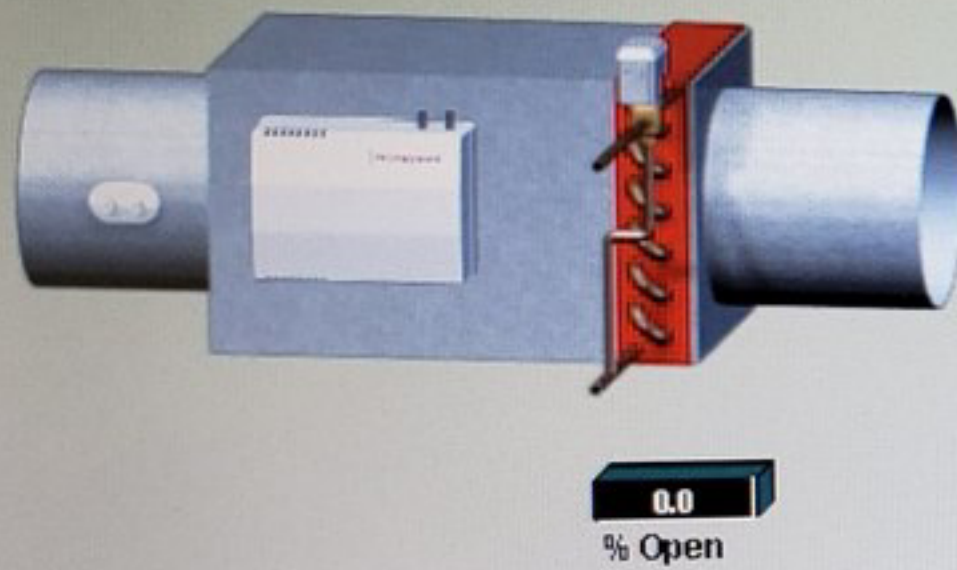
Oper

8:48 AM

DELL

RM130 / Locker Room

OAT
34.77



Room
Temperature
0.0
Set Point
0.0



Operational Data

Occupied Mode	
Operational Mode	

Main Menu

SF-2

Back

06-Nov-19 08:48:17 LONWORKS LONWORKS COMMS U 00 Data connection to LONWORKS UNAVAILABLE

nomehisrvr

Stn01

Oper

Honeywell SymmetrE R410.2

06-Nov-19

08:48:44

Alarm

System

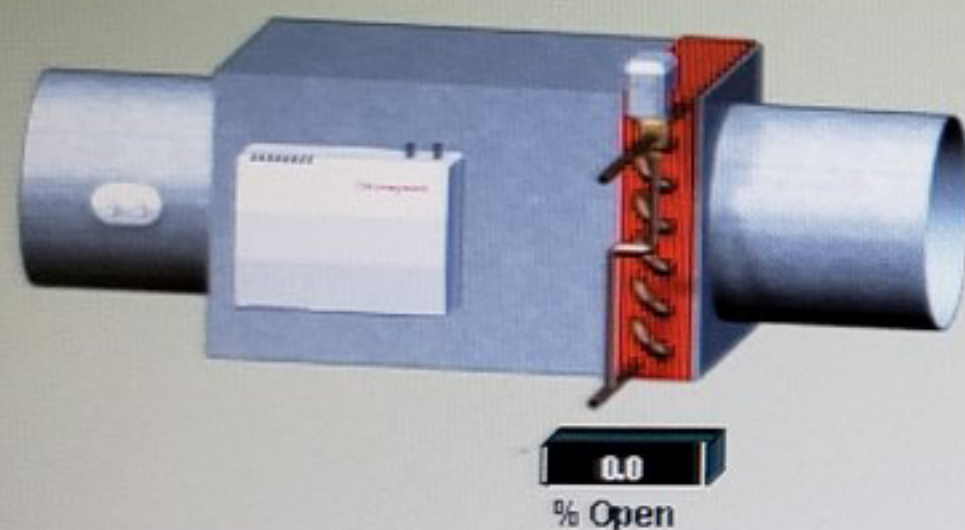
8:48 AM

DELL

RM123 / Gym Office



34.77



Room Temperature

0.0

Set Point

0.0

Operational Data

Occupied Mode	
Operational Mode	

Main Menu SF-2

Back

06-Nov-19 08:48:17 LONWORKS LONWORKS COMMS U 00 Data connection to LONWORKS UNAVAILABLE

Honeywell SymmetrE R410.2

06-Nov-19

08:49:00

Alarm

System

nomehisrvr

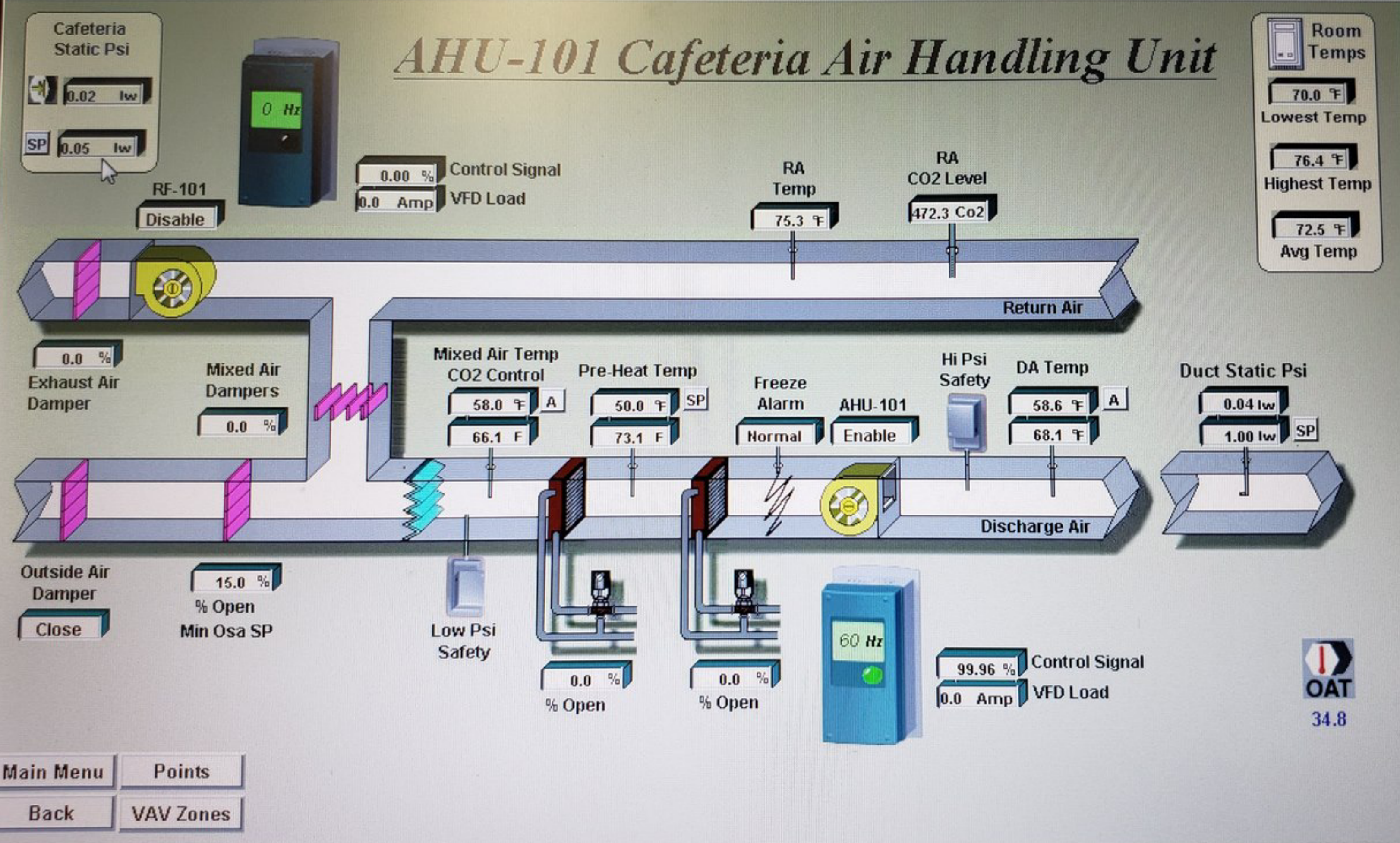
Stn01

Oper



8:49 AM





Main Menu Points
Back VAV Zones

06-Nov-19 08:48:17 LONWORKS LONWORKS COMMS U 00 Data connection to LONWORKS UNAVAILABLE

Honeywell SymmetrE R410.2

06-Nov-19

08:49:30

Alarm

System

nomehisrvr

Stn0



AHU-101 VAV Zones



34.8

VAV 101 / RM 103 - Cafeteria	BB on VAV 101	Shared	Wall Module	360.0 Cfm	SP	343.0 Cfm	DmprPos = 22.0 %
VAV 102 / RM 103 - Cafeteria	VlvPos = 75.0 %	69.4 °F	SP 70.0 °F	432.0 Cfm	SP	343.0 Cfm	DmprPos = 63.5 %
VAV 103 / RM 100 - Lobby	VlvPos = 0.0 %	72.3 °F	SP 74.0 °F	778.0 Cfm	SP	780.0 Cfm	DmprPos = 21.0 %
VAV 104 / RM 113 -Break Rm	VlvPos = 0.0 %	76.2 °F	SP 74.0 °F	396.0 Cfm	SP	392.0 Cfm	DmprPos = 68.5 %
VAV 105 / RM 101 - Lobby	VlvPos = 0.0 %	71.0 °F	SP 74.0 °F	186.0 Cfm	SP	176.0 Cfm	DmprPos = 19.5 %
VAV 106 / RM 114 - Storage	No RHC	73.0 °F	SP 74.0 °F	189.0 Cfm	SP	178.0 Cfm	DmprPos = 22.5 %

Room 101w

Room 100

Room 101

Room 101e

Room 113

Room 114

Main Menu

AHU-101

Back

06-Nov-19 08:48:17 LONWORKS LONWORKS COMMS U 00 Data connection to LONWORKS UNAVAILABLE

Honeywell SymmetrE R410.2

06-Nov-19

08:49:51

Alarm

System

nomehisrvr

Stn01

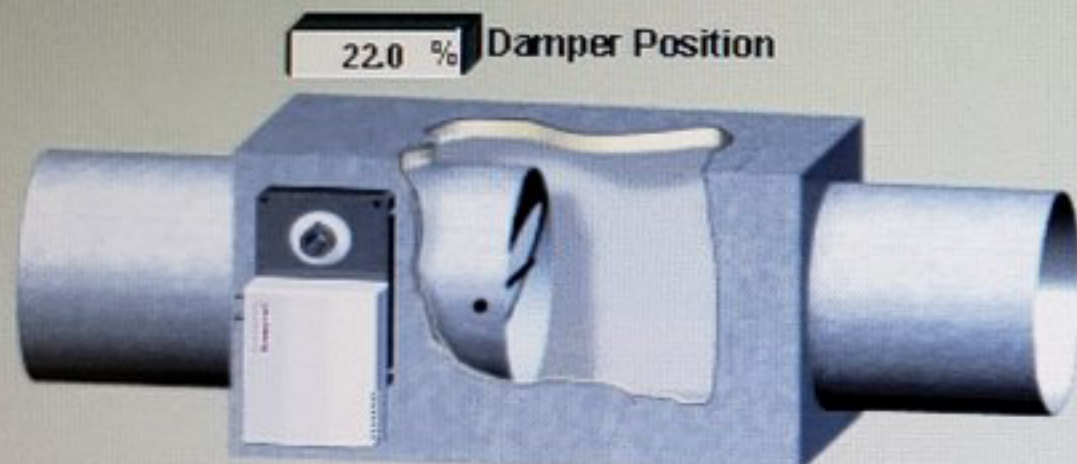
Ope



VAV-101 / RM103 / CAFETERIA



34.77



343.0 cfm Air Flow Setpoint
360.0 cfm Air Flow

Room Temperature
69.4 °F
73.9 °F Set Point

Operational Data

Occupied Mode	OCCUPIED
Operational Mode	COOL

Main Menu

AHU-101

Back

06-Nov-19 08:48:17 LONWORKS LONWORKS COMMS U 00 Data connection to LONWORKS UNAVAILABLE

nomehisrvr

Stn01

Oper

Honeywell SymmetrE R410.2

06-Nov-19

08:50:01

Alarm

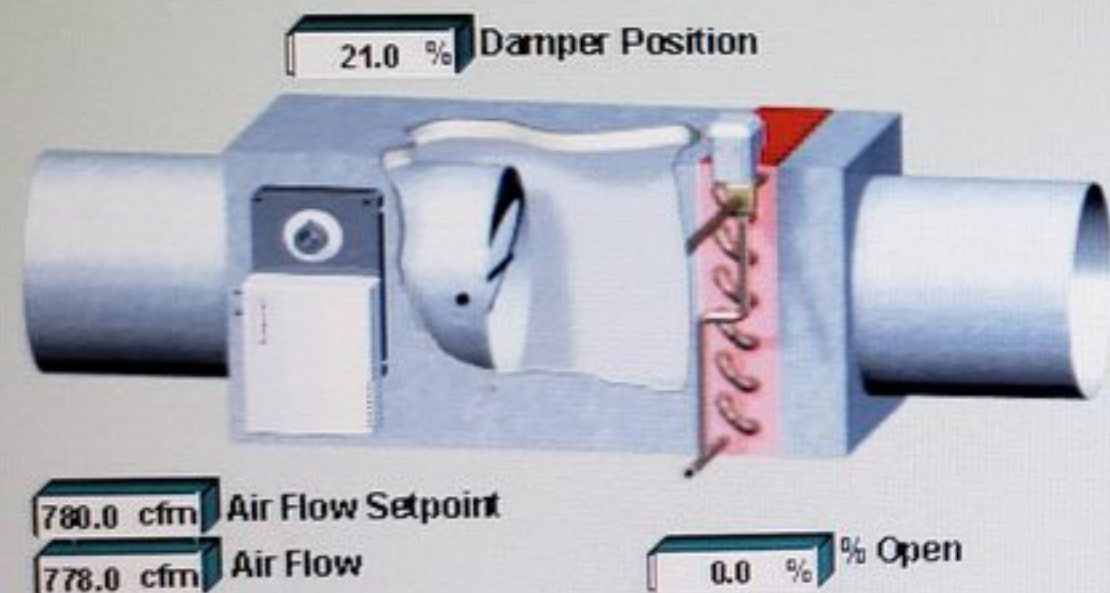
System

8:50 AM

DELL

VAV-103 / RM100 / LOBBY AREA

OAT
34.77



Room Temperature

72.3 °F

74.0 °F Set Point

Operational Data

Occupied Mode	OCCUPIED
Operational Mode	COOL

Main Menu AHU-101

Back

06-Nov-19 08:48:17 LONWORKS LONWORKS COMMS U 00 Data connection to LONWORKS UNAVAILABLE

nomehisrvr Strn01 Oper

Honeywell SymmetrE R410.2

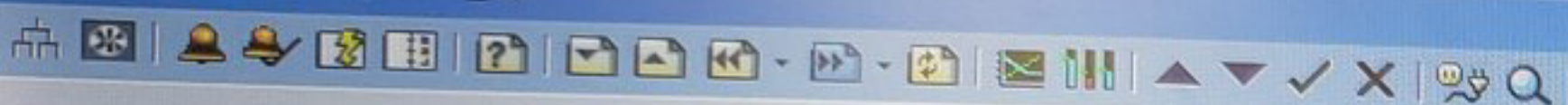
06-Nov-19

08:50:12

Alarm

System

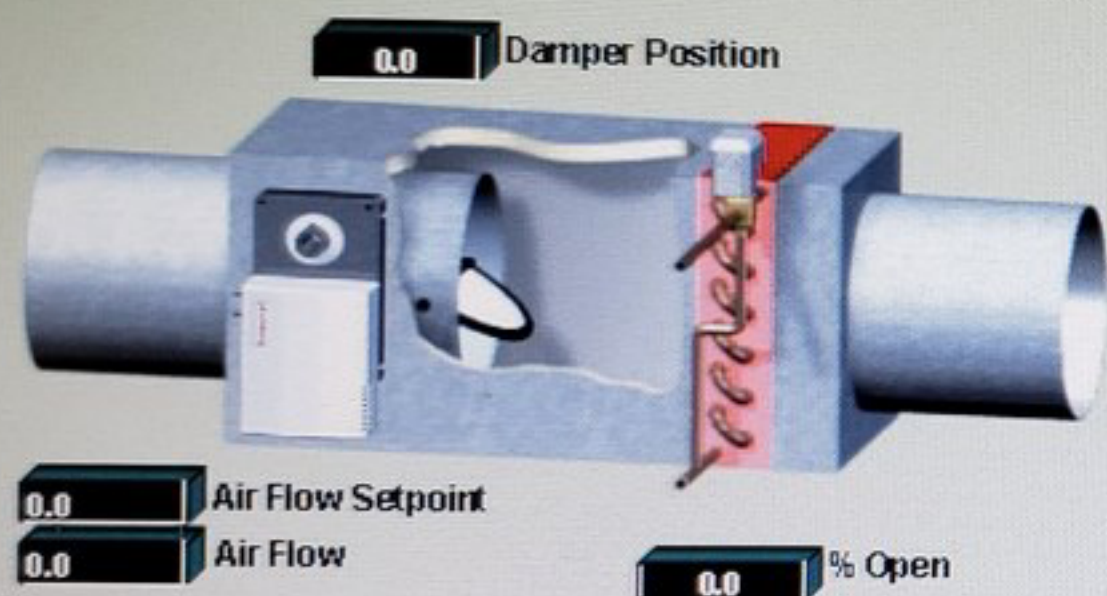
8:50 AM



Zoom To Fit Command

VAV-105 / RM101 / LOBBY AREA

OAT
34.77



Room Temperature

0.0

Set Point

Operational Data

Occupied Mode	
Operational Mode	

Main Menu

AHU-101

Back

06-Nov-19 08:50:32 LONWORKS LONWORKS COMMS U 00 Data connection to LONWORKS UNAVAILABLE

Honeywell SymmetrE R410.2

06-Nov-19

08:50:35

Alarm

System

nomehisrvr

Strn01

Oper



8:50 AM

DELL

Station - Default - (VAV102.htm)

nomehisrvr

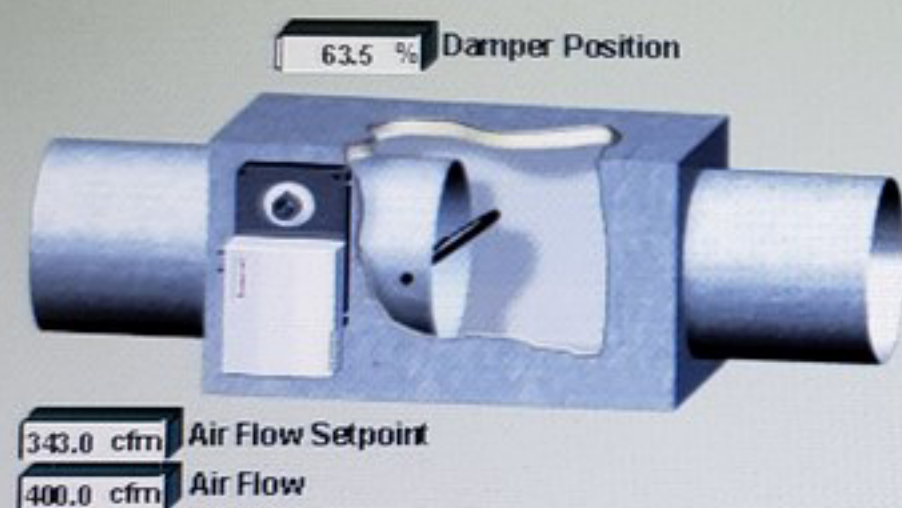
Station View Configure Help

Zoom To Fit Command

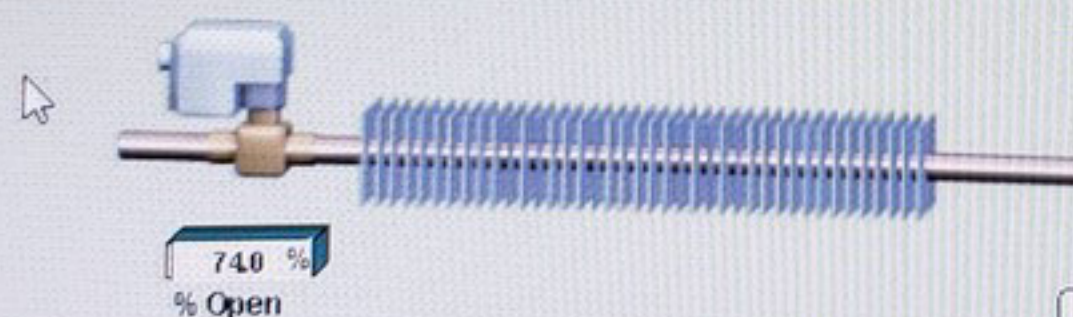
VAV-102 / RM103 / CAFETERIA



34.77



Room
Temperature
69.5 °F
70.0 °F
Set Point



Operational Data

Occupied Mode	OCCUPIED
Operational Mode	REHEAT

Main Menu

AHU-101

Back

06-Nov-19 08:50:32 LONWORKS LONWORKS COMMS U00 Data connection to LONWORKS UNAVAILABLE

Honeywell SymmetrE R410.2

06-Nov-19

08:50:40

Alarm

System

nomehisrvr

Stn01

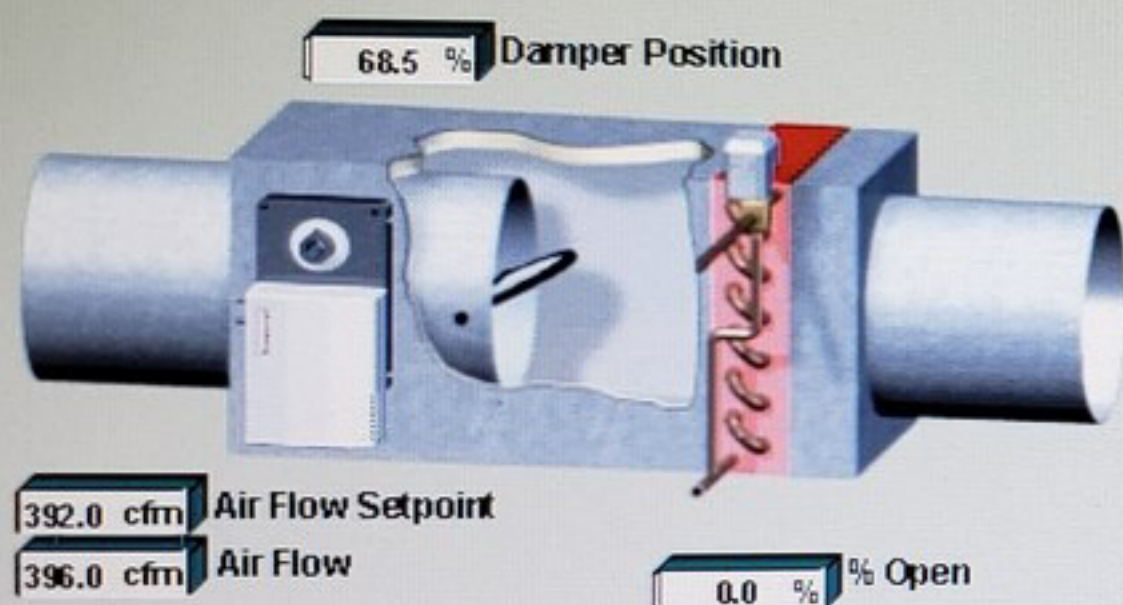
Oper

8:50 AM

DELL

VAV-104 / RM113 / BREAK ROOM

OAT
34.77



Room Temperature

76.4 °F

74.0 °F Set Point

Operational Data

Occupied Mode	OCCUPIED
Operational Mode	COOL

Main Menu

AHU-101

Back

06-Nov-19 08:50:32 LONWORKS LONWORKS COMMS U 00 Data connection to LONWORKS UNAVAILABLE

nomehisrvr

Stn01

Oper

Honeywell SymmetrE R410.2

06-Nov-19

08:52:14

Alarm

System

8:52 AM

VAV-106 / RM114 / STORAGE AREA

OAT
34.77



Room
Temperature

73.0 °F

74.0 °F
Set Point

Operational Data

Occupied Mode	OCCUPIED
Operational Mode	COOL

Main Menu AHU-101

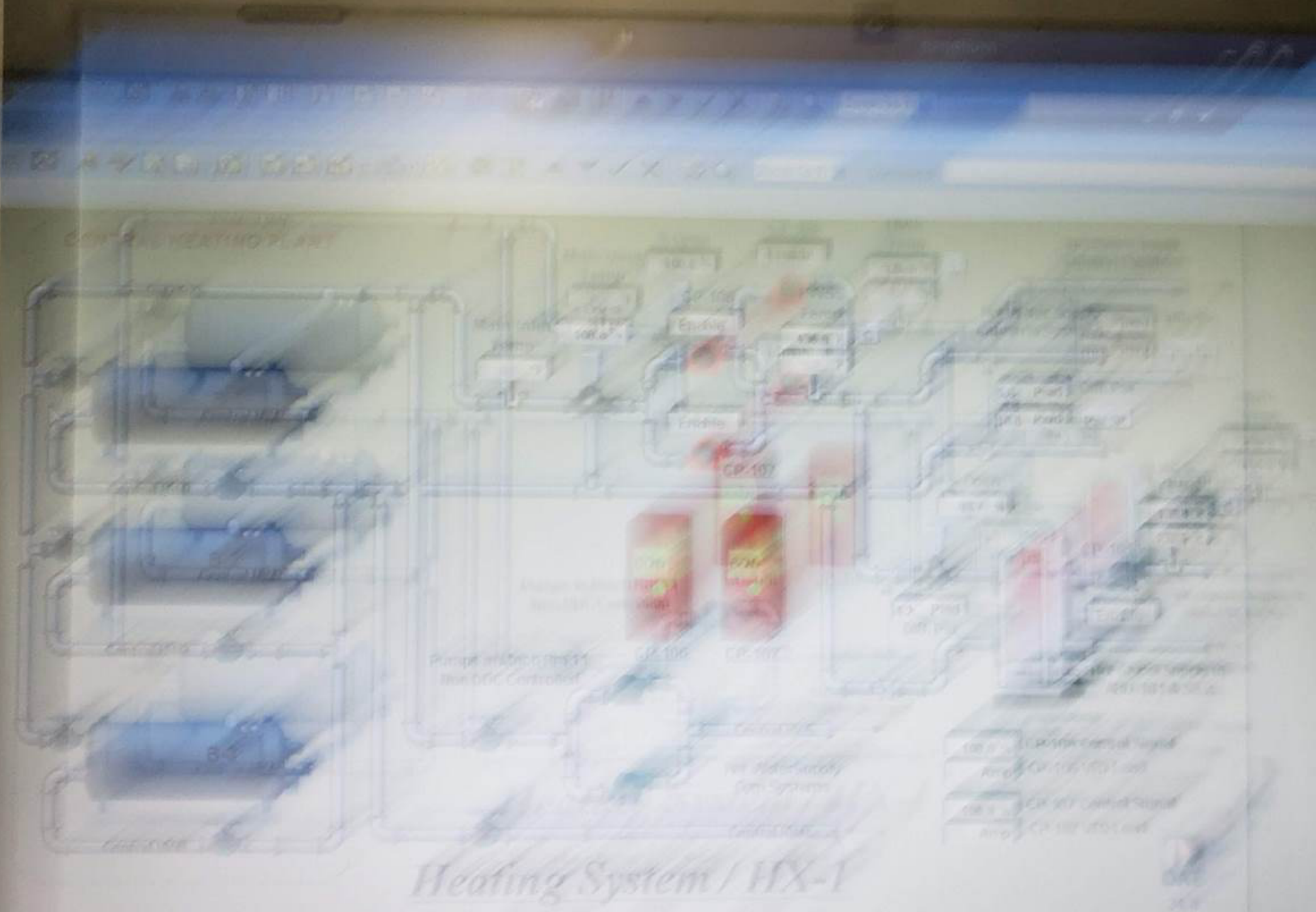
Back

06-Nov-19 08:50:32 LONWORKS LONWORKS COMMS U 00 Data connection to LONWORKS UNAVAILABLE

nomehisrvr Stn01 Oper

Honeywell SymmetrE R410.2 06-Nov-19 08:52:30 Alarm System

8:52 AM



Heating System / HX-1

Auto Manual Bank Points

05-Nov-19 08:58:32 LONWORKS LONWORKS COMMS USB Data connection to LONWORKS UNAVAILABLE

Honeywell Symmetra 9410.2

05-Nov-19

08:58:32

Alarm

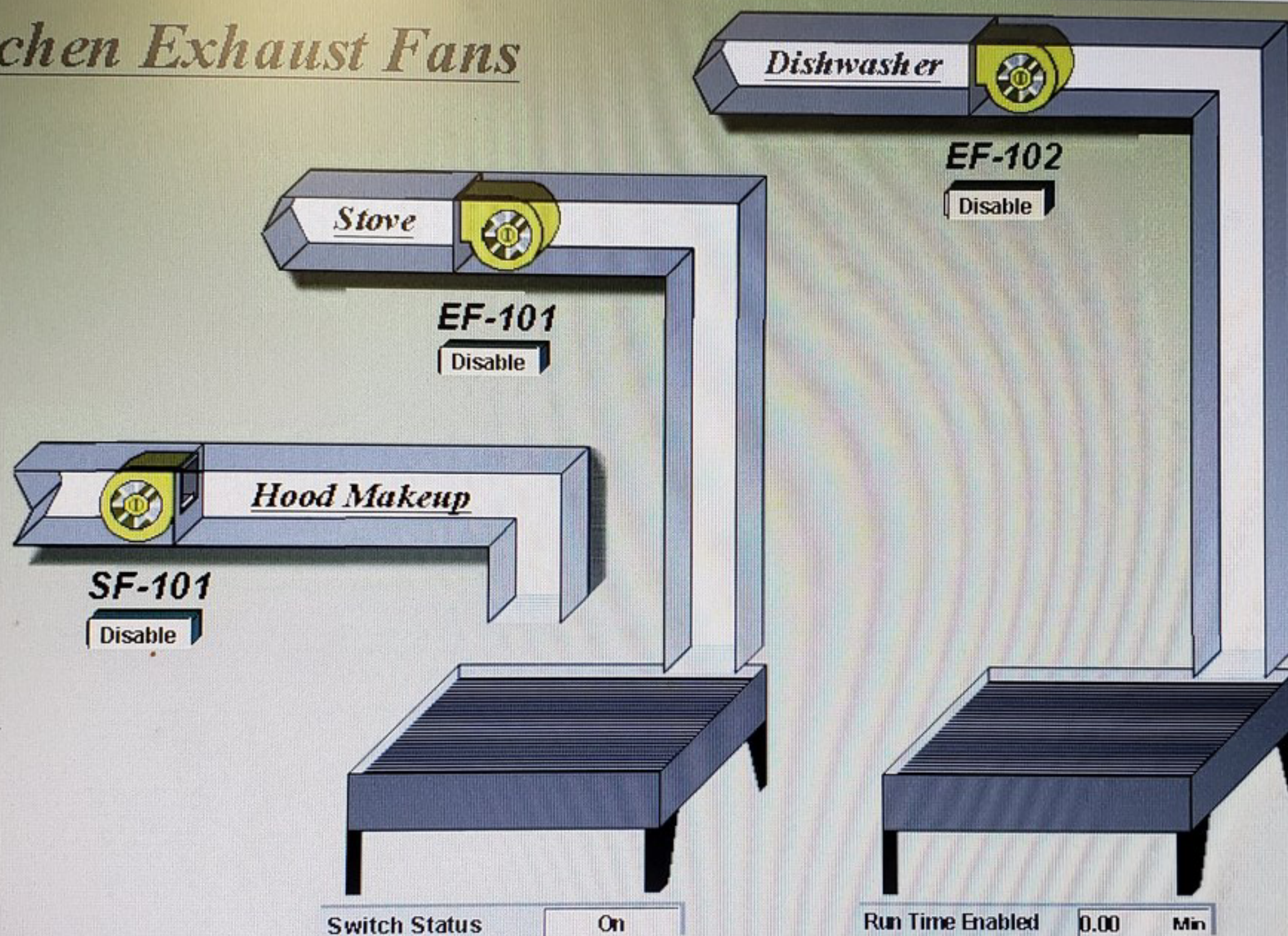
System

Item 1 of 1



34.8 °F

Kitchen Exhaust Fans



Main Menu

AHU-101

Back

06-Nov-19 08:50:32 LONWORKS LONWORKS COMMS U 00 Data connection to LONWORKS UNAVAILABLE

Honeywell SymmetrE R410.2

06-Nov-19

08:57:30

Alarm

System

nomehisrvr

Stn01

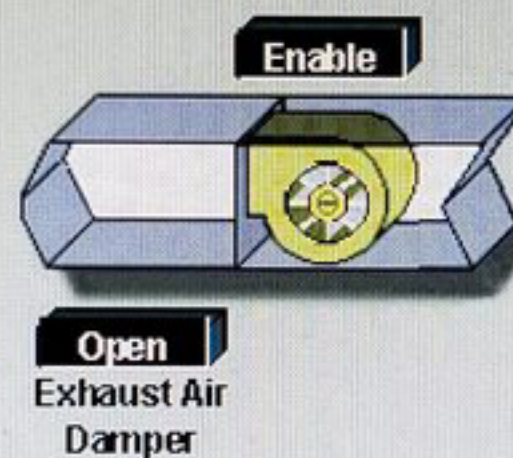


Exhaust Fans

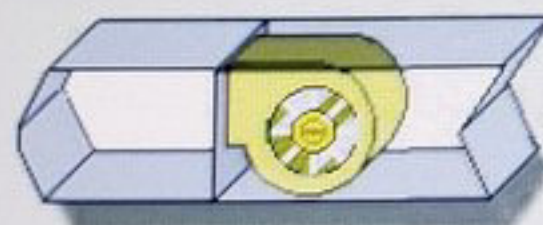
EF-1 / Weight Room Exhaust Fan



EF-2 / Locker Room Exhaust Fan



Junior High School
Messinane / Toilets Exhaust Fan



Enable Controller Enable / Disable
On Fan Status

Main Menu

SF-1

Back

SF-2

06-Nov-19 08:50:32 LONWORKS LONWORKS COMMS U 00 Data connection to LONWORKS UNAVAILABLE

Honeywell SymmetrE R410.2

06-Nov-19

08:57:40

Alarm

System

nomehisrvr

Stn01

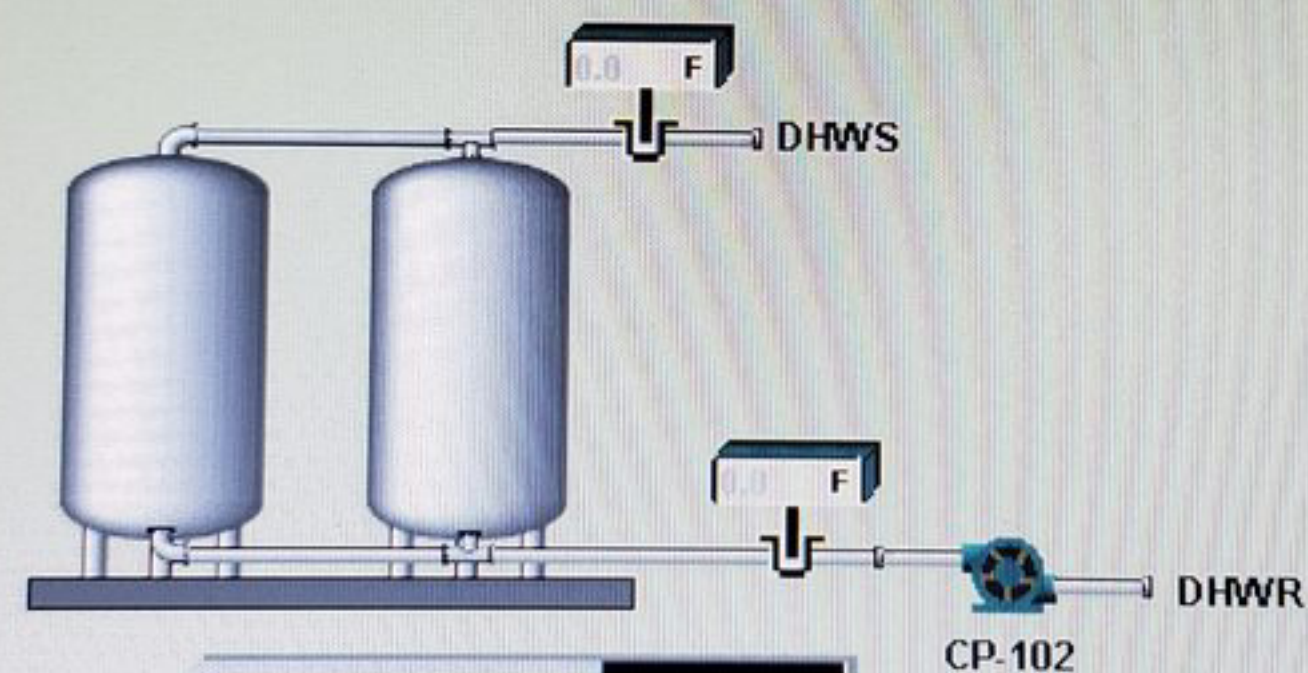
Op





34.8

Cafeteria Domestic Hot Water Systems

Occupied Mode ☐Pump Enable ☐CP-102 Kitchen Domestic Hot
Water Circulating Pump[Main Menu](#)[Back](#)

CP-102 Kitchen Domestic Hot Water Circulating Pump is Controlled by an Independent Time Schedule

06-Nov-19 08:50:32 LONWORKS LONWORKS COMMS U 00 Data connection to LONWORKS UNAVAILABLE

Honeywell SymmetrE R410.2

06-Nov-19

08:58:00

Alarm

System

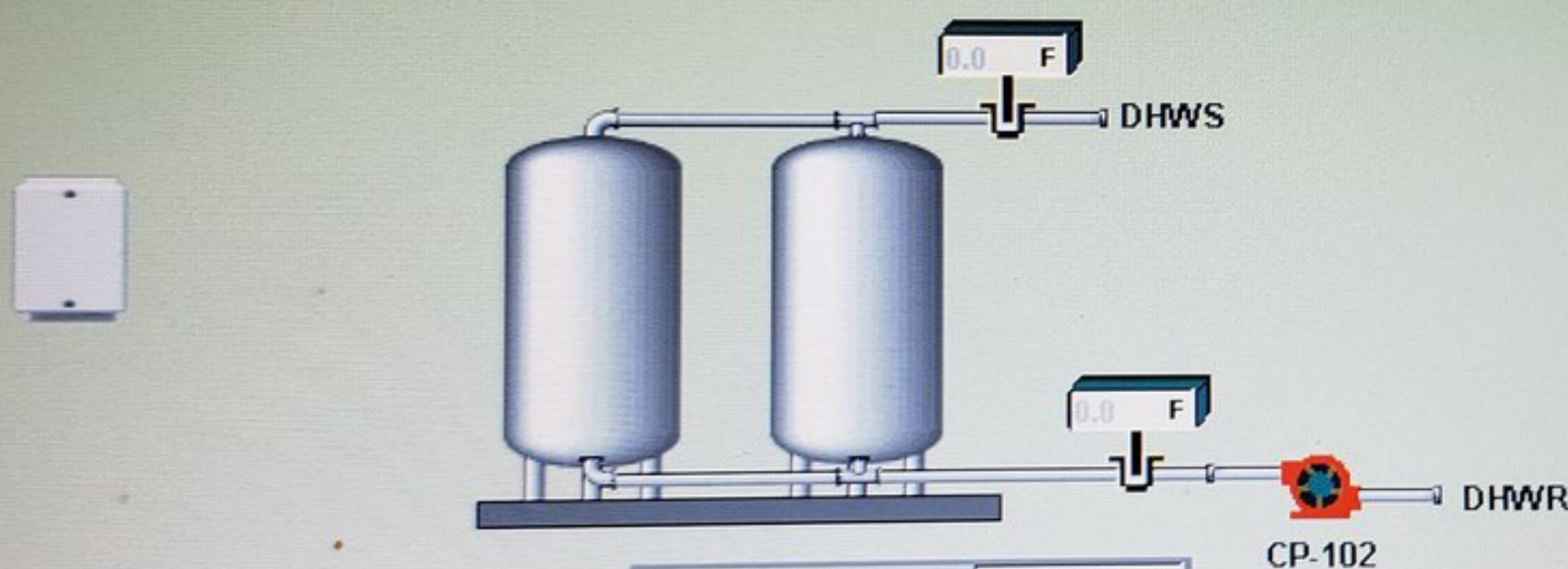
nomehisrvr

Stn01



34.8

Cafeteria Domestic Hot Water Systems



Occupied Mode	Unoccupie
Pump Enable	Disable

CP-102 Kitchen Domestic Hot Water Circulating Pump

Main Menu

Back

CP-102 Kitchen Domestic Hot Water Circulating Pump is Controlled by an Independent Time Schedule

06-Nov-19 08:50:32 LONWORKS LONWORKS COMMS U 00 Data connection to LONWORKS UNAVAILABLE

nomehisrvr

Stn01

Honeywell SymmetrE R410.2

06-Nov-19

08:58:12

Alarm

System





34.8

Monitored System Data Points

Fire Alarm Panel Monitoring

Common Fire Alarm	Normal
Fire Alarm Panel Alarm	Normal

Misc. Monitored Points

Glycol Tank Low Level Alarm	Normal
-----------------------------	--------

Misc. Control Points

Head Bolt Heater Contactor	On
Head Bolt Osa Enable Setpt	36.00

[Main Menu](#)[Boilers](#)[Back](#)

06-Nov-19 08:50:32 LONWORKS LONWORKS COMMS U 00 Data connection to LONWORKS UNAVAILABLE

Honeywell SymmetrE R410.2

06-Nov-19

08:58:30

Alarm







System

nomehisrvr



34.77

Radiant Floor Heating Zones

RFH103 / RM100-B - Lobby West		70.4 °F	SP	72.0 °F	Rad Heat VlvPos =	0.0	Pump Status	
RFH102 / RM100-A - Lobby East		70.8 °F	SP	72.0 °F	Rad Heat VlvPos =	0.0	Pump Status	
RFH101 / RM102- Gym Entrance		72.3 °F	SP	72.0 °F	Rad Heat VlvPos =	0.0 %	Pump Status	

RFH-101

Gym Entry

RFH-102

Lobby East

RFH-103

Lobby West

Main Menu

SF-2

Back

AHU-101

Floor Heating Circulating Pumps are Enabled to Run Whenever the Heating Valve Signal is Greater Than 10% and will Stop When the Signal is Less than 5%.

The Two Position Zone Valve is Open if the Heating Valve Signal is Greater Than 10% and will Close When the Signal is Less than 5%.

06-Nov-19 08:50:32 LONWORKS LONWORKS COMMS U 00 Data connection to LONWORKS UNAVAILABLE

Honeywell SymmetrE R410.2

06-Nov-19

08:58:40

Alarm

System

nomehisrvr

Stn01

Oper



Station - Default - (RFH101.htm)

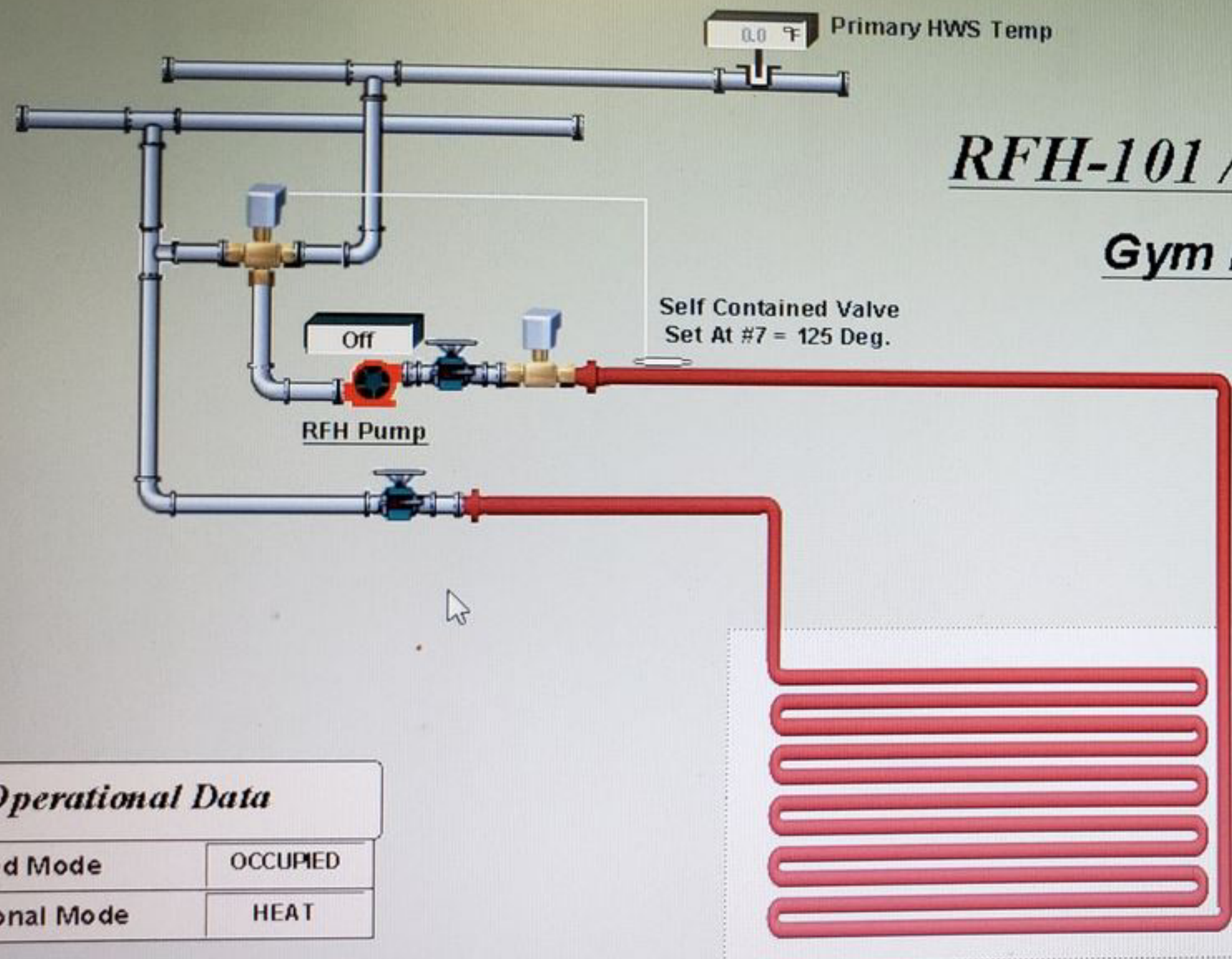
Station View Configure Help

nomehisrvr

Zoom To Fit Command



34.77



RFH-101 / Gym Lobby

Gym Lobby

Room
Temperature
70.6 °F
70.3 °F
Set Point

Operational Data

Occupied Mode	OCCUPIED
Operational Mode	HEAT

Main Menu Back Boilers

06-Nov-19 08:50:32 LONWORKS LONWORKS COMMS U 00 Data connection to LONWORKS UNAVAILABLE

Honeywell SymmetrE R410.2

06-Nov-19

08:58:52

Alarm

System

nomehisrvr

Stn01

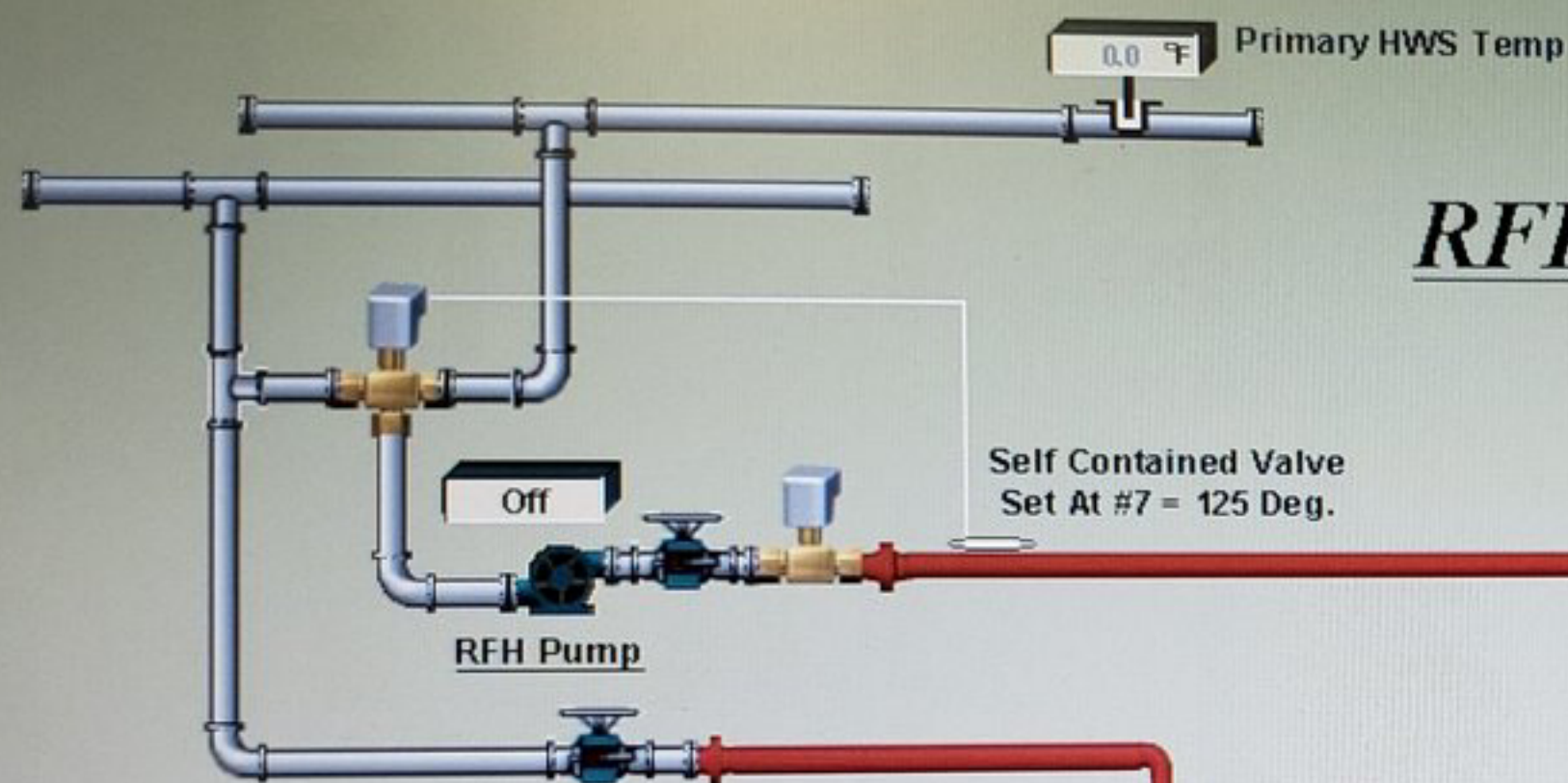
Oper

8:58 AM

DELL



34.77



RFH-102 Lobby 100-A Lobby East

Room
Temperature
71.4 °F

70.3 °F
Set Point

Operational Data

Occupied Mode	OCCUPIED
Operational Mode	HEAT

Main Menu Back Boilers

06-Nov-19 08:50:32 LONWORKS LONWORKS COMMS U 00 Data connection to LONWORKS UNAVAILABLE

Honeywell SymmetrE R410.2

06-Nov-19

08:59:20

Alarm

System

nomehisrvr

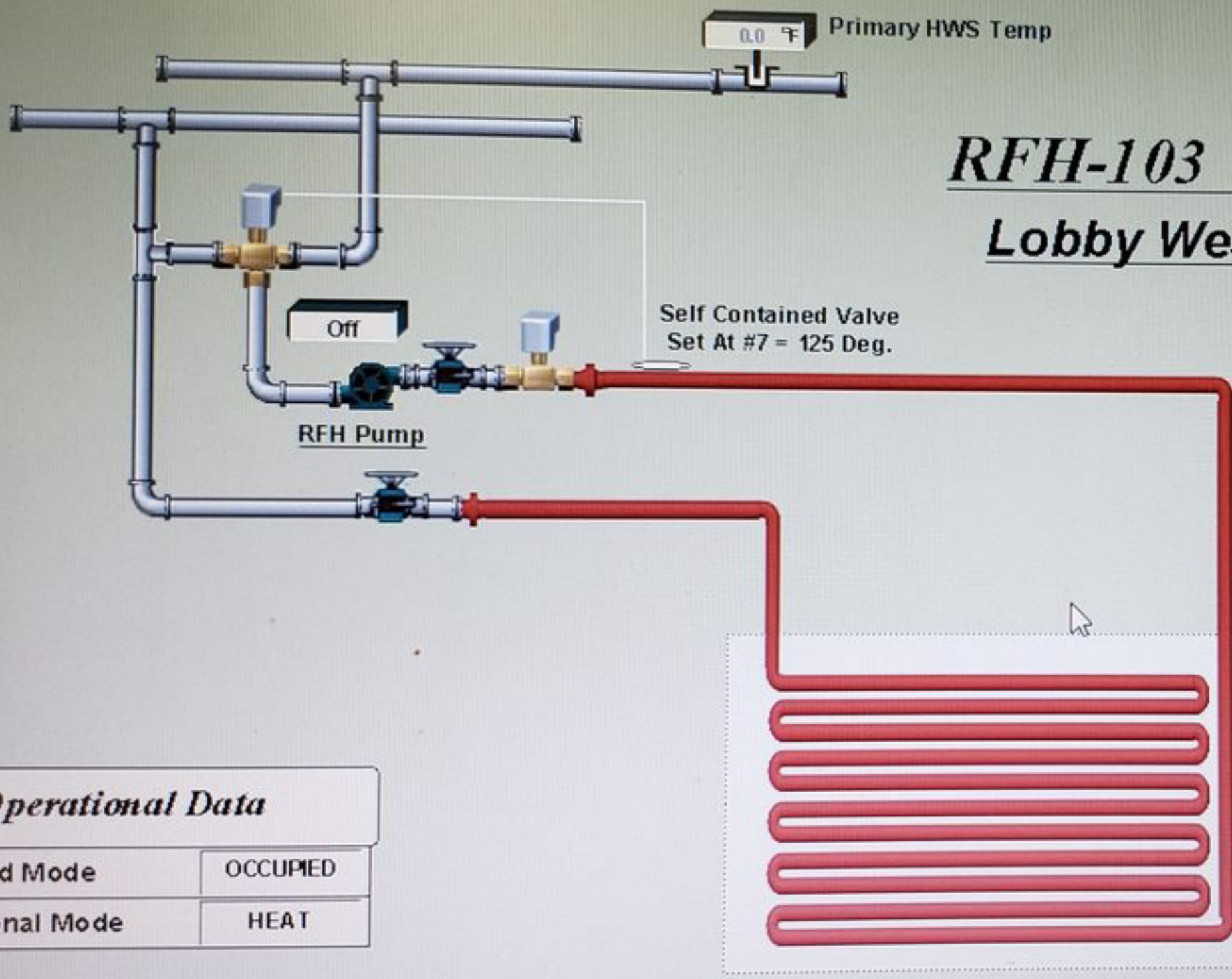
Stn01

Oper

8:59 AM

DELL

OAT
34.77



RFH-103 Lobby 100-B Lobby West Center

Room
Temperature
72.0 °F
70.3 °F
Set Point

Operational Data	
Occupied Mode	OCCUPIED
Operational Mode	HEAT
Main Menu Back Boilers	



34.77

Radiant Panel Heating Zones

RP110 / RM119 - Mens Restrm	 32.8 °F	SP  0.0	Rad Panel VlvPos = 100.0 %
RP111 / RM118 - Ladys Restrm	 69.8 °F	SP  0.0	Rad Panel VlvPos = 89.1 %
RP113 / RM108 - Caf. Restrm	 67.6 °F	SP  0.0	Rad Panel VlvPos = 0.0
RP116 / RM111 - Janitors Rm	 72.2 °F	SP  0.0	Rad Panel VlvPos = 0.0

Baseboard Heating Zone

BB101 / RM102 - Corridor Area	 69.4 °F	SP  0.0	Baseboard VlvPos = 0.0
-------------------------------	---------------------------------------------------------------------------------------------	----------------------------------------------------------------------------------------------	------------------------

Room 119

Room 108

Room 102

Room 118

Room 111

Main Menu

SF-2

Back

AHU-101

06-Nov-19 08:50:32 LONWORKS LONWORKS COMMS U 00 Data connection to LONWORKS UNAVAILABLE

nomehisrvr

Stn01

Oper

Honeywell SymmetrE R410.2

06-Nov-19

08:59:50

Alarm

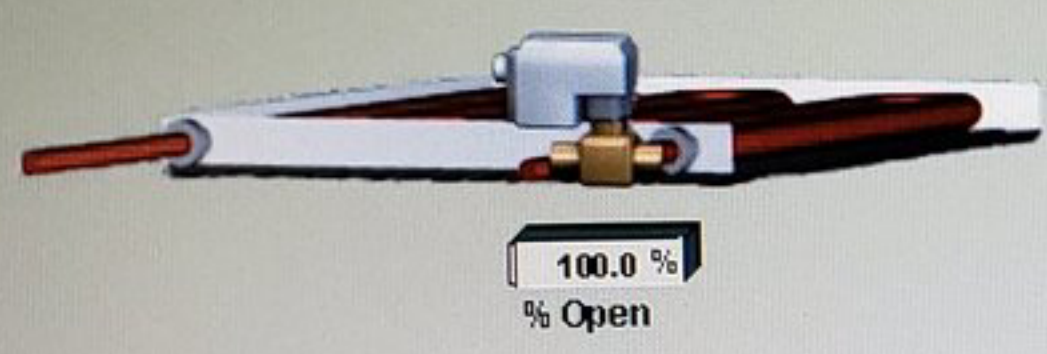
System

8:59 AM

DELL



34.77

RP110 / RM119 / Gym Mens Restroom



Room Temperature

32.0 °F



70.0 °F
Set Point

Operational Data	
Occupied Mode	OCCUPIED
Operational Mode	HEAT

Main Menu SF-2

Back





34.77

RP113 / RM108 / Cafeteria Restroom



100.0 %
% Open

Room
Temperature
67.8 °F
70.0 °F
Set Point

Operational Data

Occupied Mode	OCCUPIED
Operational Mode	HEAT

Main Menu

SF-2

Back

06-Nov-19 08:50:32 LONWORKS LONWORKS COMMS U 00 Data connection to LONWORKS UNAVAILABLE

nomehisrvr

Stn01

Oper

Honeywell SymmetrE R410.2

06-Nov-19

09:01:10

Alarm

System

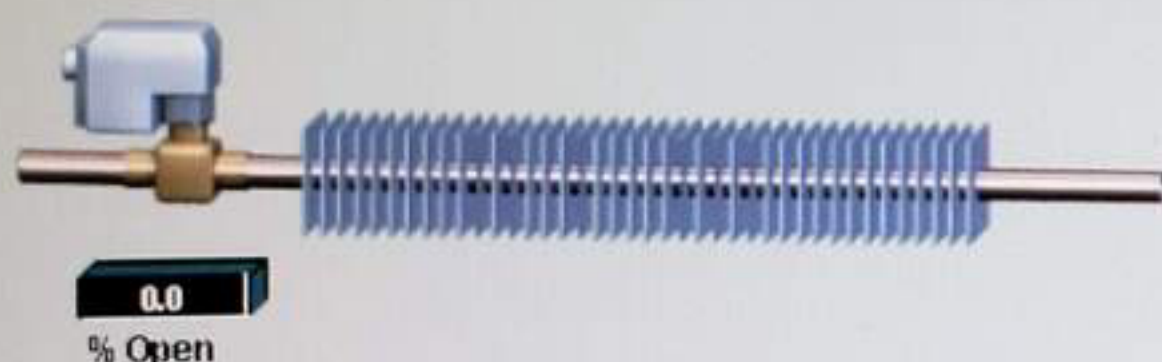
9:01 AM

DELL



34.77

BB-101 / RM102 / CAFETERIA Hall



Room Temperature

70.0 °F

70.0 °F
Set Point

Operational Data

Occupied Mode	
Operational Mode	

Main Menu AHU-101

Back

06-Nov-19 08:50:32 LONWORKS LONWORKS COMMS U 00 Data connection to LONWORKS UNAVAILABLE

Alarm System

nomehisrvr Str01 Oper

Honeywell SymmetrE R410.2

06-Nov-19 09:01:41

9:01 AM

DELL



34.77

RP111 / RM118 / Gym Womans Restroom



Room
Temperature
0.0

Set Point
0.0

Operational Data

Occupied Mode

Operational Mode

Main Menu

SF-2

Back

06-Nov-19 08:50:32 LONWORKS LONWORKS COMMS U 00 Data connection to LONWORKS UNAVAILABLE

Honeywell SymmetrE R410.2

06-Nov-19

09:02:10

Alarm

System

nomehisrvr

Stn01

Oper

9:02 AM

DELL

OAT
34.77

RP116 / RM111 / Janitors Room



Room
Temperature

0.0 °

70.0 °F
Set Point

Operational Data

Occupied Mode	
Operational Mode	

Main Menu

SF-2

Back

06-Nov-19 08:50:32 LONWORKS LONWORKS COMMS U 00 Data connection to LONWORKS UNAVAILABLE

nomehisrvr

Stn01

Oper

Honeywell SymmetrE R410.2

06-Nov-19

09:02:33

Alarm

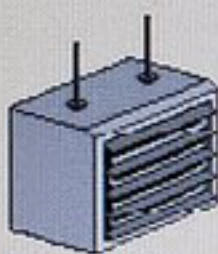
System

9:02 AM

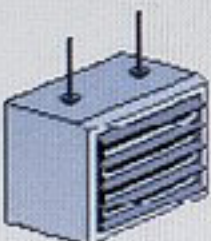
34.77

Unit Heater Zones

UH101 / RM114w - Storage Area		73.7 °F	SP	70.0 °F	Fan Enable	Off	Fan Status	Off
UH102 / RM114e - Storage Area		73.0 °F	SP	70.0 °F	Fan Enable	Off	Fan Status	Off
UH103 / AHU101 - Fan Room		82.2 °F	SP	70.0 °F	Fan Enable	Off	Fan Status	



UH-101

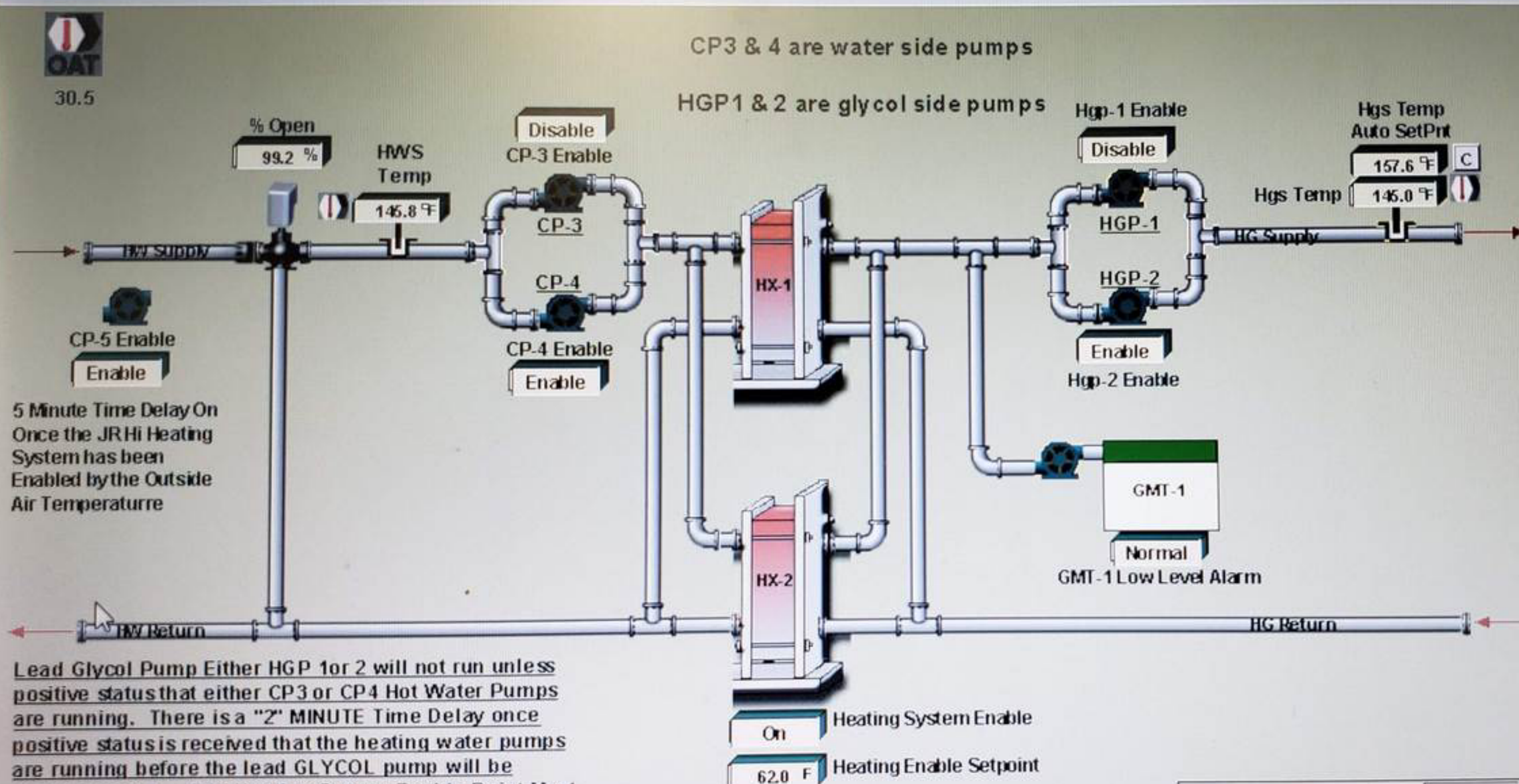


UH-102

UH-103

Main Menu

Back



Lead Glycol Pump Either HGP 1 or 2 will not run unless positive status that either CP3 or CP4 Hot Water Pumps are running. There is a "2" MINUTE Time Delay once positive status is received that the heating water pumps are running before the lead GLYCOL pump will be enabled to run. JR Hi Heating System Enable Point Must Also Be True, See POINTS PAGE for details

M7 Heating System

[Main Menu](#)[Back](#)[Points](#)

JR Hi Heating Enable	On
JRHi Heat Enable Setpoint	62.0 F
Glycol Hi Temp Alarm	Normal
Hi Temp Alarm Setpoint	200.0 F

06-Nov-19 08:50:32 LONWORKS LONWORKS COMMS U 00 Data connection to LONWORKS UNAVAILABLE

Honeywell SymmetrE R410.2

06-Nov-19

09:04:40

Alarm

System

nomehisrvr

Stn01



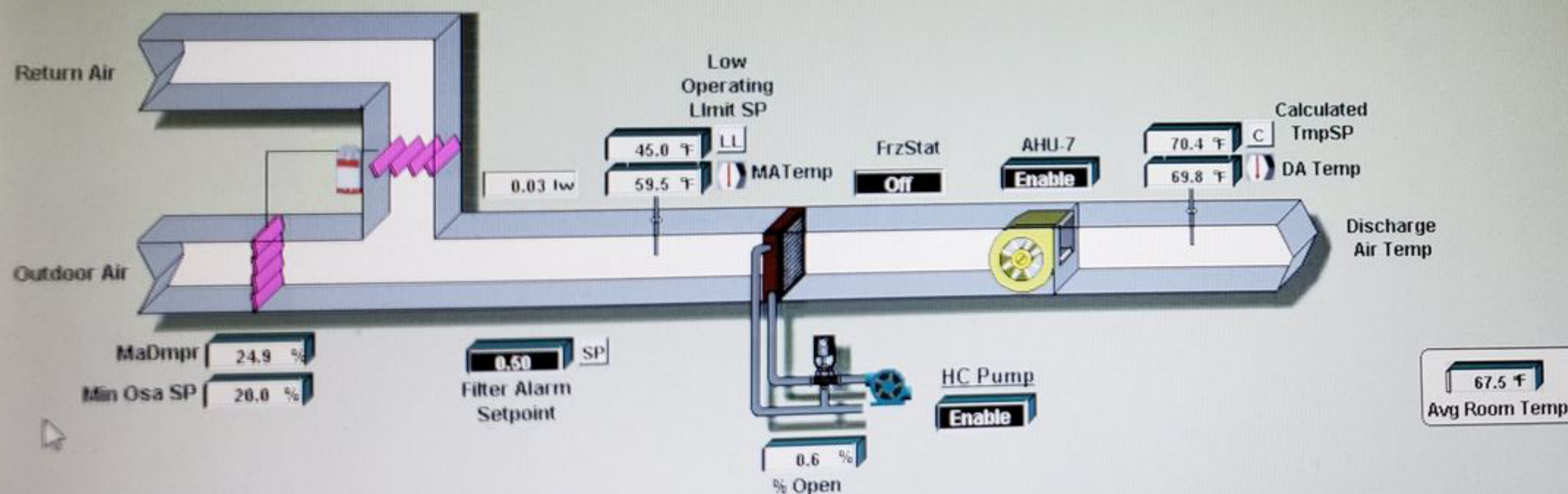
OAT
30.5

AHU-7 Air Handling Unit *Junior High 1st Floor*

Toilets Exhaust Fan
JH-EF1



Enable
Fan Enable



Main Menu Points
Back Zones

AHU - Occupied Mode	Occupied	Low Da Temp Alarm	Normal
Circulation Mode	Off	Common Fire Alarm	Off

06-Nov-19 08:50:32 LONWORKS LONWORKS COMMS U 00 Data connection to LONWORKS UNAVAILABLE

Honeywell SymmetrE R410.2

06-Nov-19

09:05:10

Alarm

System

nomehisrvr

Stn01

Oper

9:05 AM

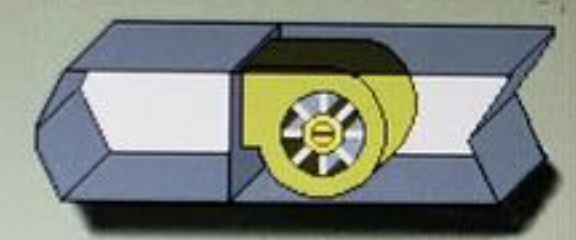
DELL



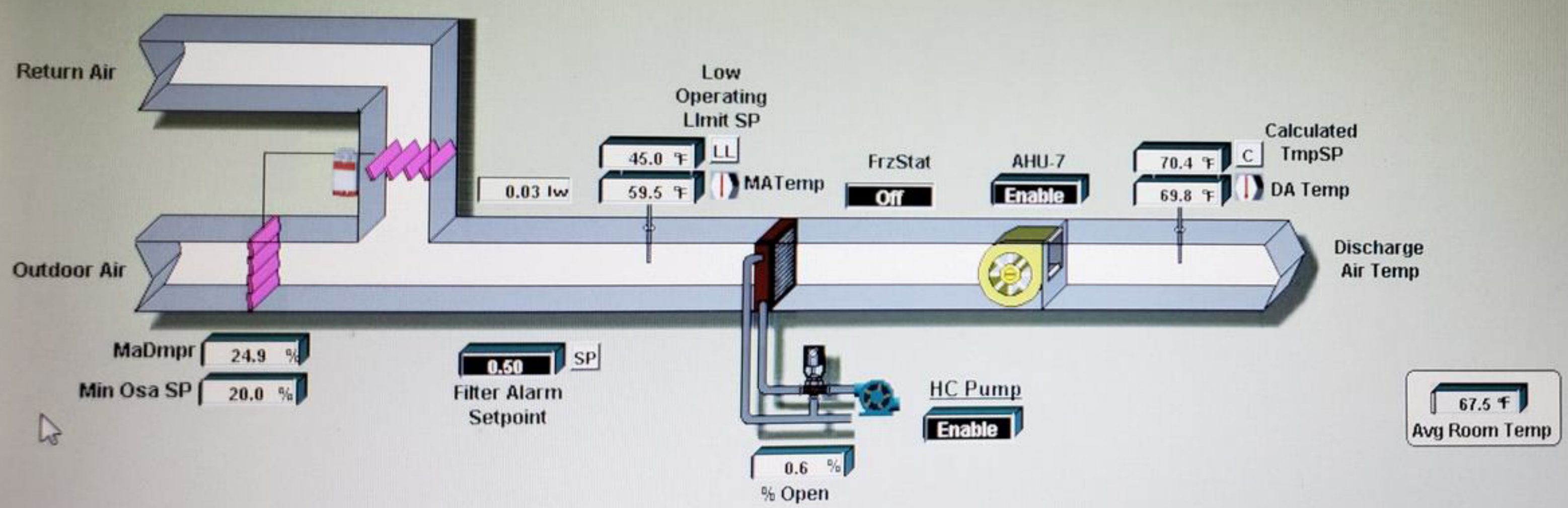
30.5

AHU-7 Air Handling Unit Junior High 1st Floor

Toilets Exhaust Fan JH-EF1



Enable
Fan Enable



Main Menu Points
Back Zones

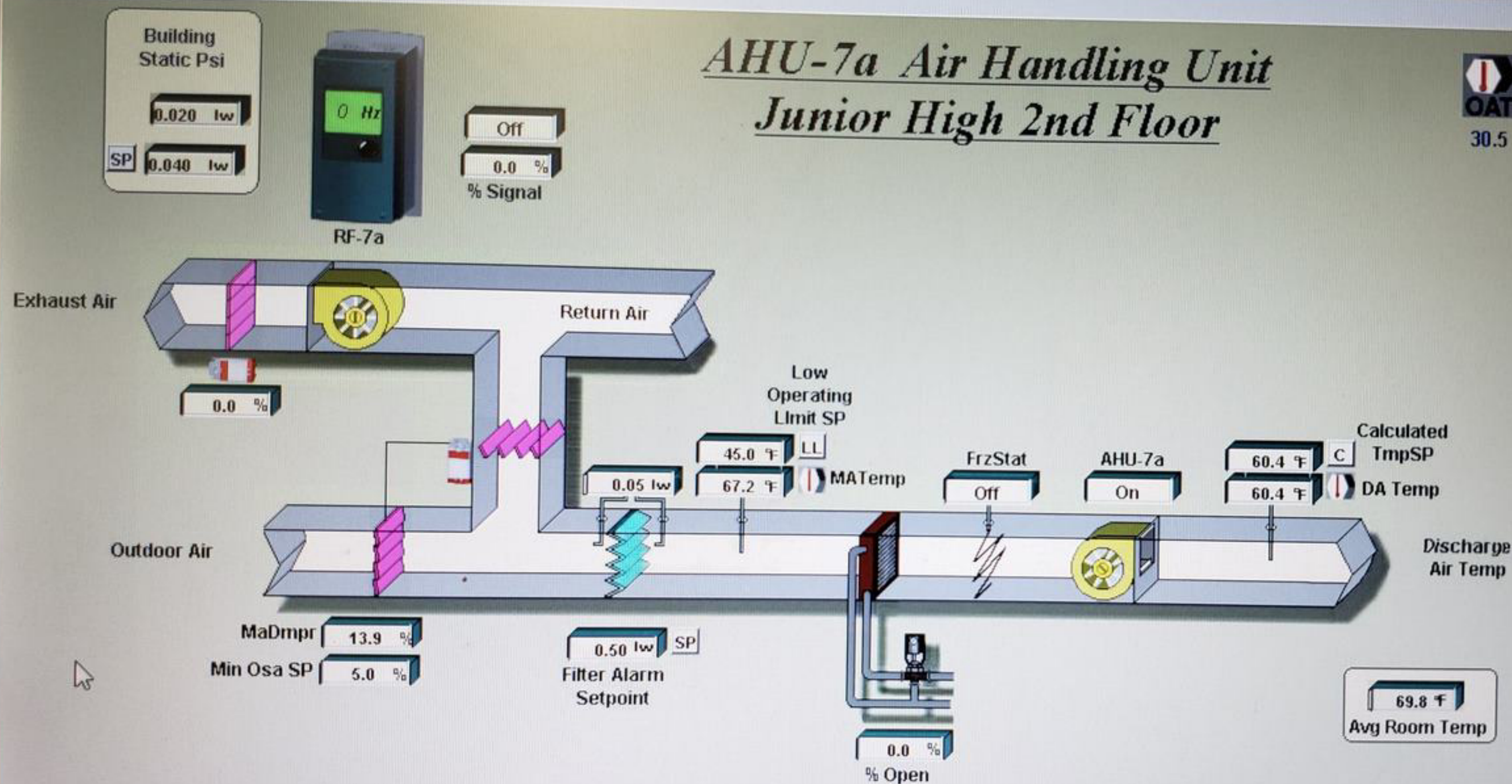
AHU - Occupied Mode	Occupied	Low Da Temp Alarm	Normal
Circulation Mode	Off	Common Fire Alarm	Off

06-Nov-19 08:50:32 LONWORKS LONWORKS COMMS U 00 Data connection to LONWORKS UNAVAILABLE



AHU-7a Air Handling Unit Junior High 2nd Floor

OAT
30.5



Main Menu Points
Back T-Stat Zones

AHU - Occupied Mode	Occupied	Low Da Temp Alarm	Normal	Hi Space Static Psi	Normal
Circulation Mode	Off	Common Fire Alarm	Off	Low Space Static Psi	Normal

06-Nov-19 08:50:32 LONWORKS LONWORKS COMMS U 00 Data connection to LONWORKS UNAVAILABLE

Honeywell SymmetrE R410.2

06-Nov-19

09:06:00

Alarm

System

nomehisrvr

Str01



DELL

Zone Control

Room A 102 - AHU7		0.0	SP	0.0
Room A 106 - AHU7A		0.0	SP	0.0
Room A 114 - AHU7A		0.0	SP	0.0
Room A 118 - AHU7		0.0	SP	0.0
Room A 119 - AHU7		0.0	SP	0.0
Room A 120 - AHU7		0.0	SP	0.0
Room A 121 - AHU7		0.0	SP	0.0
Room A 122 - AHU7A		0.0	SP	0.0
Room A 123 - AHU7		0.0	SP	0.0

Room A 124 - AHU7		0.0	SP	0.0
Room A 125 - AHU7		0.0	SP	0.0
Room A 127 - AHU7		0.0	SP	0.0
Room A 128 - AHU7		0.0	SP	0.0
Room A 175 - AHU7A		0.0	SP	0.0
Room A 186 - AHU7		0.0	SP	0.0
Room A 187 - AHU7A		0.0	SP	0.0
Room A 188 - AHU7A		0.0	SP	0.0
Room A 194 - AHU7A		0.0	SP	0.0

Main Menu

Back

06-Nov-19 08:50:32 LONWORKS LONWORKS COMMS U 00 Data connection to LONWORKS UNAVAILABLE

nomehisrvr

Stn01

Oper

Honeywell SymmetrE R410.2

06-Nov-19

09:06:20

Alarm

System

9:06 AM

DELL

AHU-7a Point Data



30.5

AHU-7a Operational Modes

Occupied Mode	Occupied
Circulation Mode	Off

AHU-7a Space Static Psi

Space Static Psi Set Point	0.04 inH ₂ O
Space Static Psi Hi Alarm SP	0.00
Space Static Psi Low Alarm SP	0.00

Da Temp Reset Schedule

Room Temp	Da Temp
0.0	0.0 °
0.0	0.0 °

DA Reset Set Point 60.4 °F

For No Reset Schedule Make the Da Temp Set Points The Same

69.8 °F
Avg Room Temp[Main Menu](#)[Back](#)

06-Nov-19 08:50:32 LONWORKS LONWORKS COMMS U 00 Data connection to LONWORKS UNAVAILABLE

nomehisrvr

Stn01

Oper

Honeywell SymmetrE R410.2

06-Nov-19

09:06:33


Alarm

System

 9:06 A

Zone Control

Room A 102 - AHU7		72.2 °F	SP	51.8 °F
Room A 106 - AHU7A		68.5 °F	SP	68.5 °F
Room A 114 - AHU7A		72.0 °F	SP	72.0 °F
Room A 118 - AHU7		69.4 °F	SP	69.2 °F
Room A 119 - AHU7		67.8 °F	SP	69.1 °F
Room A 120 - AHU7		69.4 °F	SP	69.2 °F
Room A 121 - AHU7		66.2 °F	SP	70.9 °F
Room A 122 - AHU7A		67.9 °F	SP	66.3 °F
Room A 123 - AHU7		67.6 °F	SP	68.3 °F

Room A 124 - AHU7		68.3 °F	SP	69.1 °F
Room A 125 - AHU7		66.1 °F	SP	55.4 °F
Room A 127 - AHU7		67.3 °F	SP	66.9 °F
Room A 128 - AHU7		32.0 °F	SP	51.8 °F
Room A 175 - AHU7A		64.6 °F	SP	54.4 °F
Room A 186 - AHU7		68.7 °F	SP	70.0 °F
Room A 187 - AHU7A		69.8 °F	SP	54.4 °F
Room A 188 - AHU7A		68.9 °F	SP	69.1 °F
Room A 194 - AHU7A		71.7 °F	SP	71.5 °F

[Main Menu](#)[Back](#)

06-Nov-19 08:50:32 LONWORKS LONWORKS COMMS U 00 Data connection to LONWORKS UNAVAILABLE

nomehisrvr

Stn01

Open

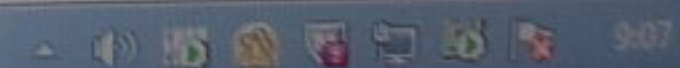
Honeywell SymmetrE R410.2

06-Nov-19

09:07:00

Alarm

System

 9:07

AHU-7 Point Data



30.5

AHU-7 Operational Modes

Occupied Mode	Occupied
Circulation Mode	Off

AHU-7 Coil Circ. Pump

Pump Enable Mode	Enable
Pump Status	On
JH Heating System	On

Da Temp Reset Schedule

Room Temp	Da Temp
76.0 F	55.0 °F
64.0 F	78.0 °F

DA Reset Set Point 70.4 °F

For No Reset Schedule Make the
Da Temp Set Points The Same

67.5 °F
Avg Room Temp

[Main Menu](#)[Back](#)

06-Nov-19 08:50:32 LONWORKS LONWORKS COMMS U 00 Data connection to LONWORKS UNAVAILABLE

Honeywell SymmetrE R410.2

06-Nov-19

09:07:12

Alarm

System

nomehisrvr

Stn01



DELL

SF-1 Point Data

SF-1 Operational Modes

Occupied Mode	
Circulation Mode	
Warm Up Mode	
Warm Up Set Point	0.0
Night Setback Mode	
Night Mode Set Point	64.0 °F
Cold Run Mode	
Cold Run Setpoint	-20.0 °F

SF-1 Damper Settings

Min Osa Damper Set Point	0.0
Cold Run Min Damper Set Pnt	5.0 %

Da Temp Reset Schedule

GYM Temp	Da Temp
0.0	0.0
0.0	0.0

DA Reset Set Point 62.1 °F

For No Reset Schedule Make the
Da Temp Set Points The Same

CO2 Reset Schedule

MA Temp	CO2 Level
0.0	0.0
0.0	0.0

CO2 Reset Set Pnt 59.8 °F

For No Reset Schedule Make the
CO2 Set Points The Same

SF-1 VFD Modes

Occupied OverRide Mode	Off
Event OverRide Mode	Off
Occ OvRd Speed Setpnt	75.0 %
Event OvRd Speed Setpnt	100.0 %
SF1 Vfd Fault	Normal
RF1 Vfd Fault	Off

OverRide 6hr Timers Enable Modes
Located In Gym PE Right Office

DO NOT TURN TIMERS BACKWARDS

[Main Menu](#)
[Back](#)

06-Nov-19 08:50:32 LONWORKS LONWORKS COMMS U 00 Data connection to LONWORKS UNAVAILABLE

nomehisvr

SF-2 Point Data

SF-2 Operational Modes

Occupied Mode	<input type="checkbox"/>
Night Setback Mode	<input type="checkbox"/>
Night Mode Set Point	62.0 °F
Cold Run Mode	<input type="checkbox"/>
Cold Run Setpoint	-20.0 °F

Da Temp Reset Schedule

OSA Temp	Da Temp
0.0	0.0 °
0.0	0.0 °

DA Reset Set Point 56.1 °F

For No Reset Schedule Make the
Da Temp Set Points The Same

Cafeteria CUH Lock Out

WWSD Cuh Mode	<input type="checkbox"/>
WWSD Cuh Setpoint	60.0 °F

[Main Menu](#)[Back](#)

06-Nov-19 08:50:32 LONWORKS LONWORKS COMMS U 00 Data connection to LONWORKS UNAVAILABLE

Honeywell SymmetrE R410.2

06-Nov-19

09:07:50

Alarm

System

nomehisrvr

Stn01



AHU-101 Point Data



34.8

AHU-101 Operational Modes

Occupied Mode	
Circulation Mode	
Warm Up Mode	
Warm Up Set Point	0.00 °
Night Setback Mode	
Night Mode Set Point	62.0 °
Cold Run Mode	
Cold Run Setpoint	-10.0 °

Gym CUH Lock Out

WWSD Cuh Mode	
WWSD Cuh Setpoint	60.0 °

Da Temp Reset Schedule

OSA Temp	Da Temp
0.0	0.0 °
0.0	0.0 °

DA Reset Set Point 58.0 °

For No Reset Schedule Make the
Da Temp Set Points The Same

CO2 Reset Schedule

MA Temp	CO2 Level
0.0	0.0
0.0	0.0

CO2 Reset Set Pnt 58.0 °

For No Reset Schedule Make the
CO2 Set Points The Same

AHU-101 Space Static Psi

Space Static Psi Set Point	0.05 °
Min Space Static Psi Set Point	0.01 °
Min Osa Damper Set Point	15.0 %
Cold Run Min Damper Set Pnt	5.0 %

[Main Menu](#)[Back](#)

06-Nov-19 08:50:32 LONWORKS LONWORKS COMMS U 00 Data connection to LONWORKS UNAVAILABLE

nomehisrvr

Stn01

Honeywell SymmetrE R410.2

06-Nov-19

08:08:34

Alarm

System



Zone Control

Room A 102 - AHU7		72.2 °F	SP	51.8 °F
Room A 106 - AHU7A		68.3 °F	SP	68.5 °F
Room A 114 - AHU7A		71.9 °F	SP	72.0 °F
Room A 118 - AHU7		69.5 °F	SP	69.2 °F
Room A 119 - AHU7		67.8 °F	SP	69.1 °F
Room A 120 - AHU7		69.4 °F	SP	69.2 °F
Room A 121 - AHU7		66.2 °F	SP	70.9 °F
Room A 122 - AHU7A		67.9 °F	SP	66.3 °F
Room A 123 - AHU7		67.6 °F	SP	68.3 °F

Room A 124 - AHU7		68.3 °F	SP	69.1 °F
Room A 125 - AHU7		66.1 °F	SP	55.4 °F
Room A 127 - AHU7		67.3 °F	SP	66.9 °F
Room A 128 - AHU7		32.0 °F	SP	51.8 °F
Room A 175 - AHU7A		64.6 °F	SP	54.4 °F
Room A 186 - AHU7		68.7 °F	SP	70.0 °F
Room A 187 - AHU7A		69.8 °F	SP	54.4 °F
Room A 188 - AHU7A		69.4 °F	SP	69.1 °F
Room A 194 - AHU7A		71.9 °F	SP	71.5 °F

[Main Menu](#)[Back](#)

06-Nov-19 08:50:32 LONWORKS LONWORKS COMMS U 00 Data connection to LONWORKS UNAVAILABLE

nomehisrvr

Stn01

Ope

Honeywell SymmetrE R410.2

06-Nov-19

09:09:20

Alarm

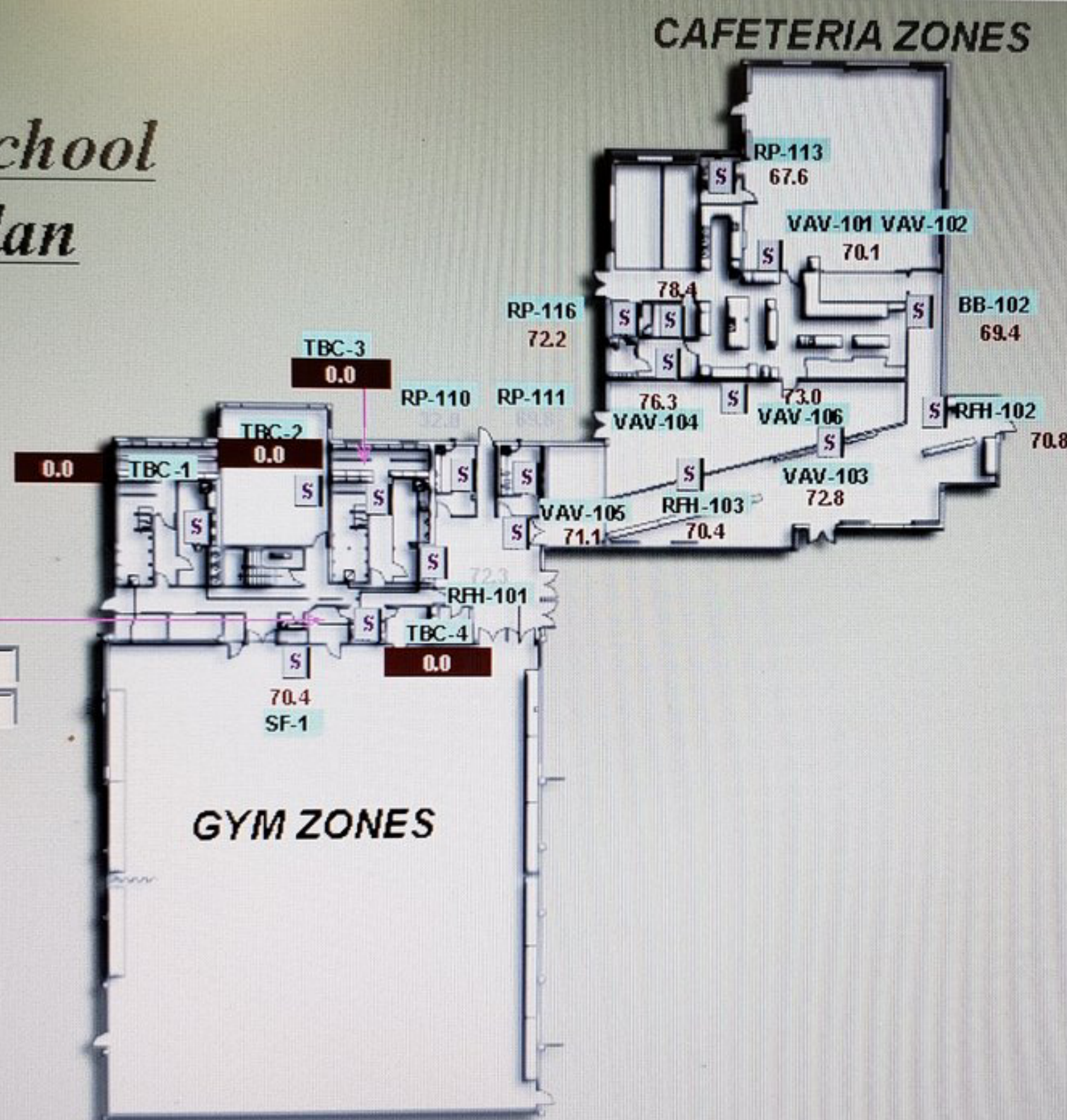
System



Jr./Sr. High School Main Floor Plan



34.8°F



Gym OverRide Modes
Enabled By Wall Timers

Occupied OverRide Mode	Off
Event OverRide Mode	Off

Main Menu

Back

06-Nov-19 08:50:32 LONWORKS LONWORKS COMMS U 00 Data connection to LONWORKS UNAVAILABLE

Honeywell SymmetrE R410.2

06-Nov-19

09:09:40

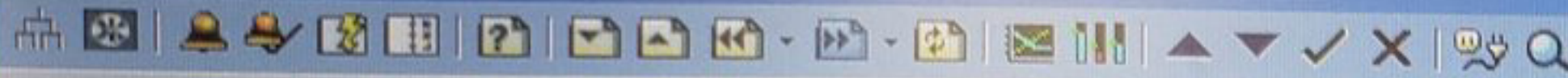
Alarm

System

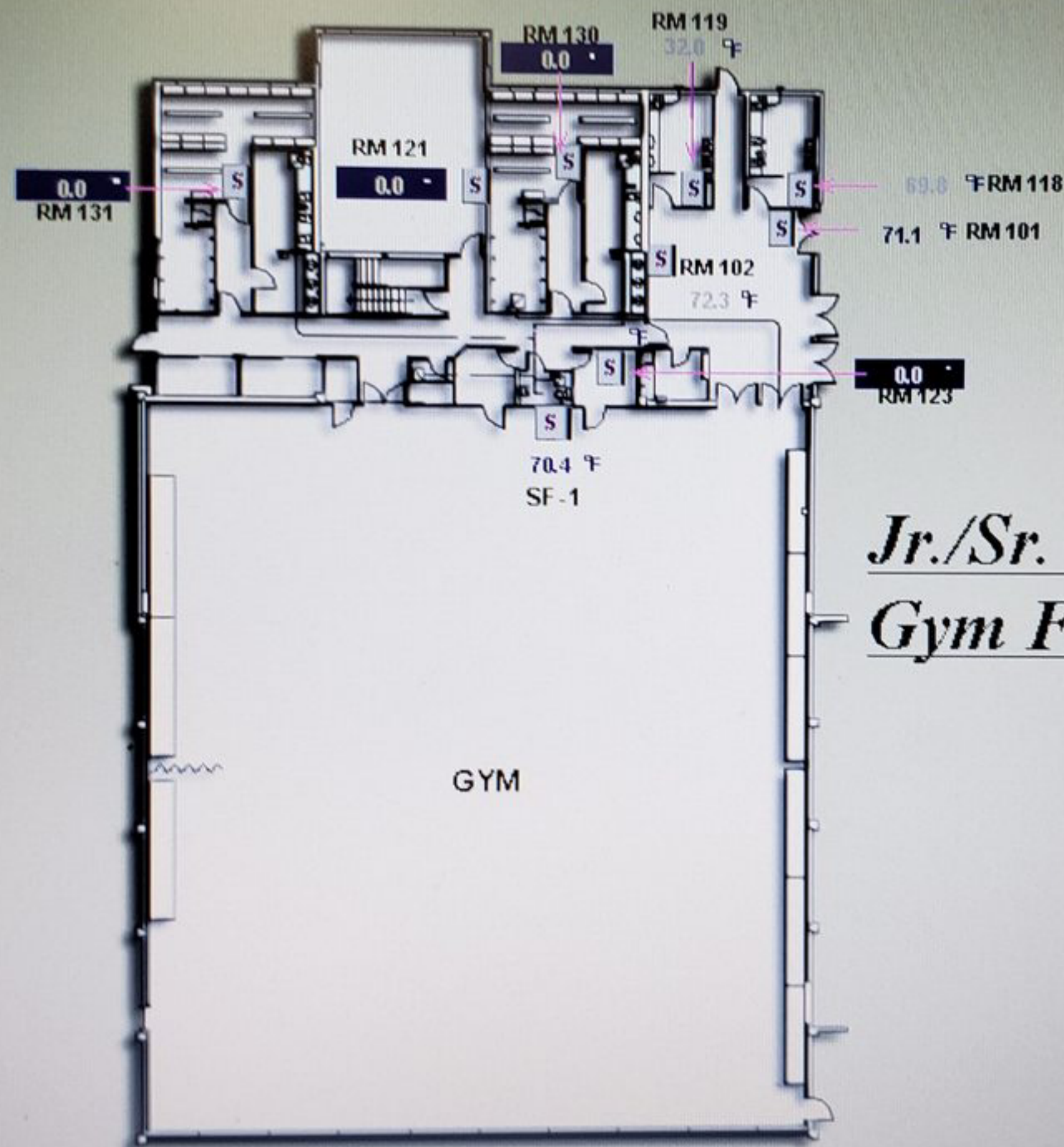
nomehisrvr

Stn01





OAT
34.8°F



Jr./Sr. High School Gym Floor Plan

Main Menu

SF-1

Back

SF-2

06-Nov-19 08:50:32 LONWORKS LONWORKS COMMS U 00 Data connection to LONWORKS UNAVAILABLE

Honeywell SymmetrE R410.2

06-Nov-19

09:09:50

Alarm

System

nomehisrvr

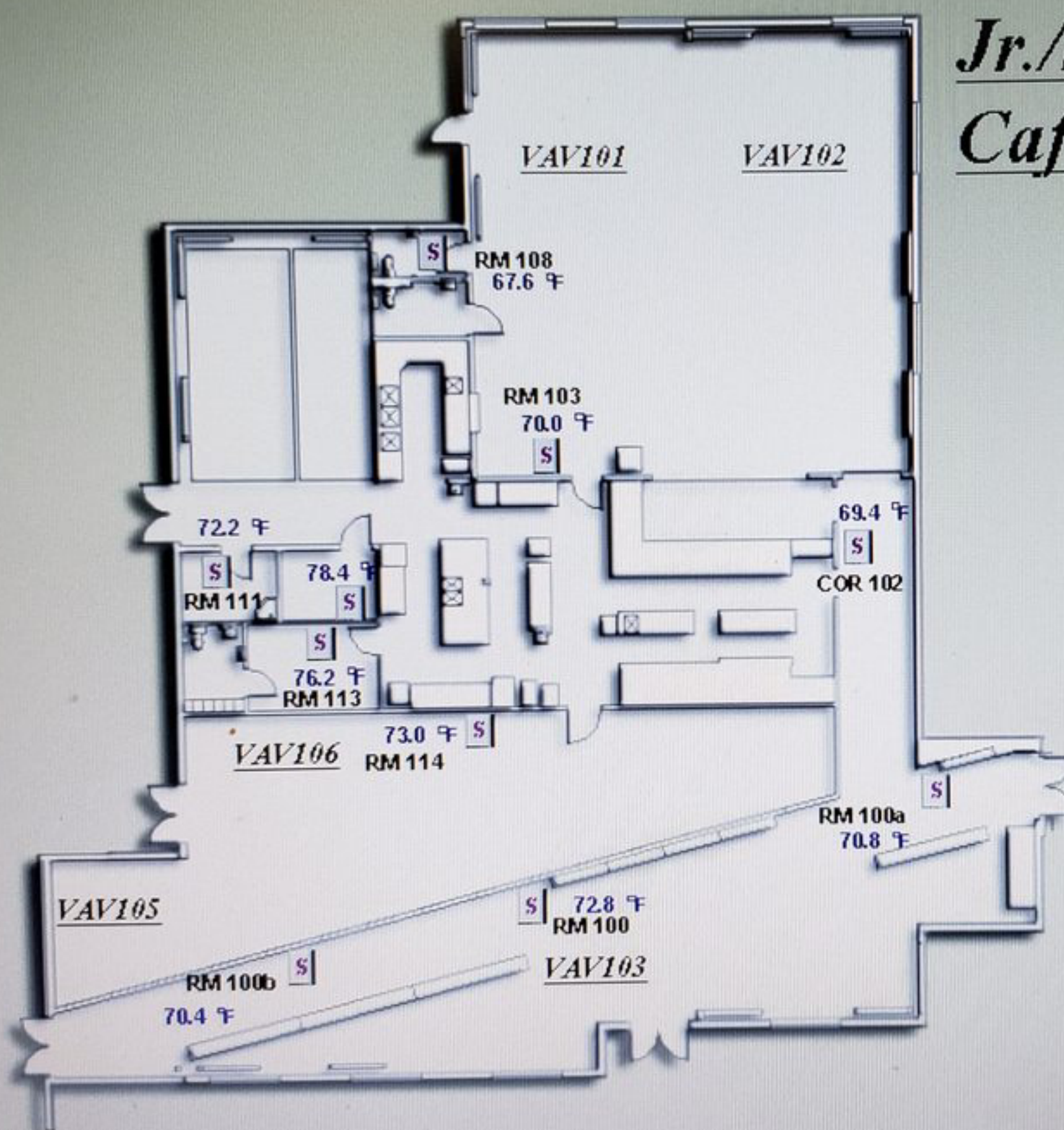
Stn01

DELL



34.8 °F

Jr./Sr. High School Cafeteria Floor Plan



Main Menu

AHU-101

Back

06-Nov-19 08:50:32 LONWORKS LONWORKS COMMS U 00 Data connection to LONWORKS UNAVAILABLE

Honeywell SymmetrE R410.2

06-Nov-19

09:10:00

Alarm

System

nomehisrvr

Stn01

