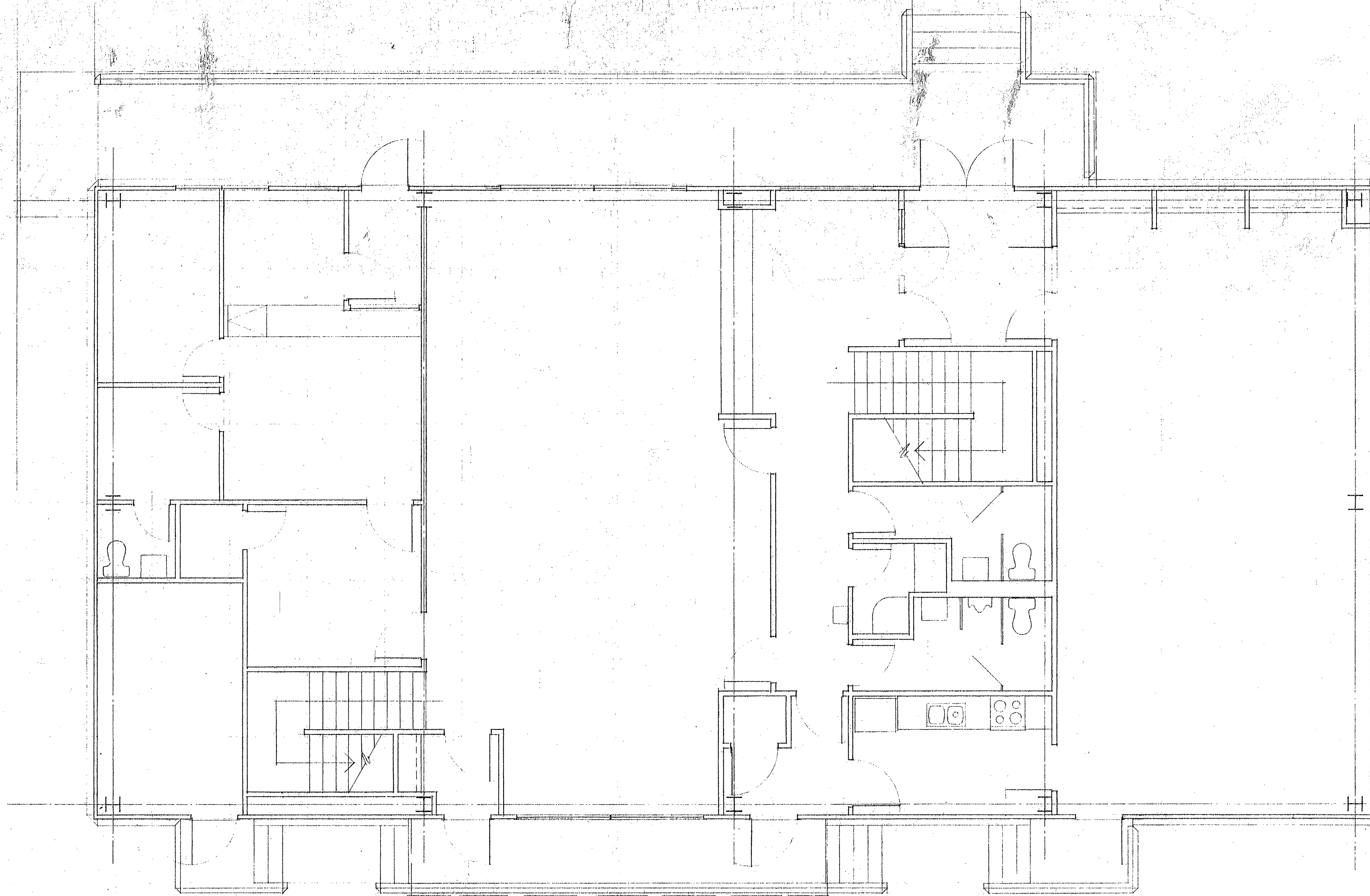


2 1/4" = 1'-0"



CH<sub>2</sub>M  
HILL

DES.  
DR.  
CHK.  
APPD.

NO. DATE

REVISION

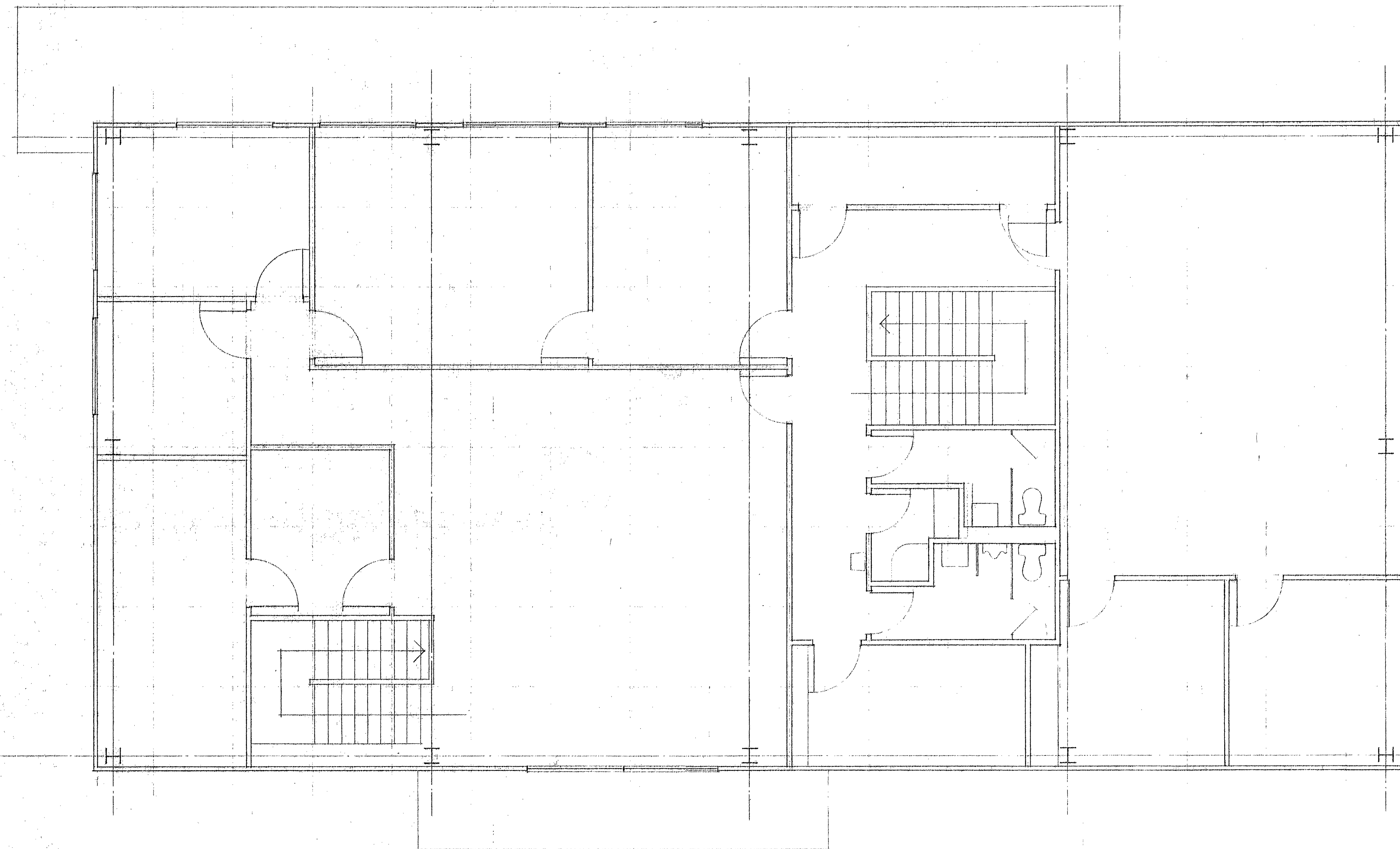
BY APPD.

CITY HALL for  
NOME, ALASKA

FIRST FLOOR PLAN  
1/4" = 1'-0"

SHEET  
OF  
PROJ. S 9355  
NO. 5  
DATE 5-13-75  
DWG.  
NO.

PRELIMINARY



DES.	
DR.	
CHK.	
APPD.	

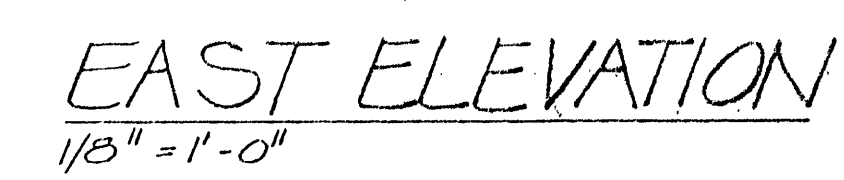
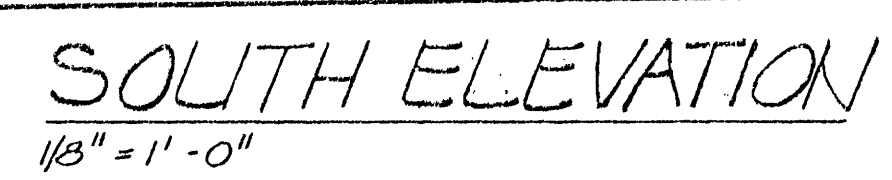
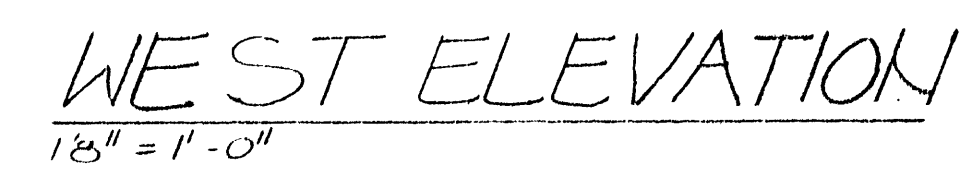
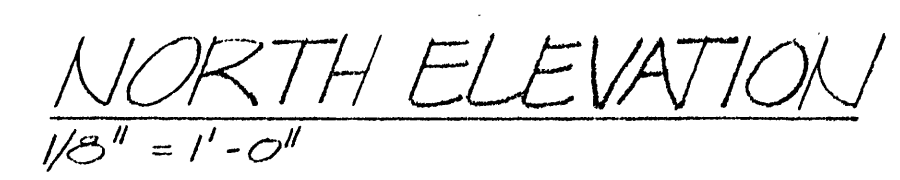
NO.	DATE	REVISION	BY	APPD.

CITY HALL for  
NOME, ALASKA

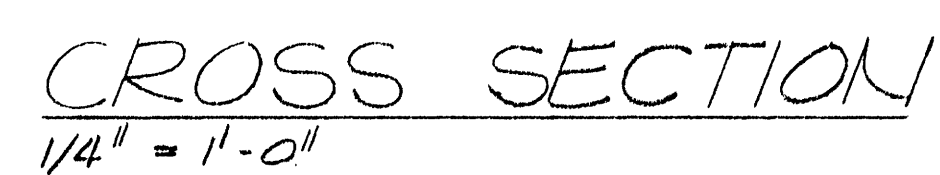
SECOND FLOOR PLAN  
1/4" = 1'-0"

SHEET OF	
PROJ. NO.	59355
DATE	5-13-75
DWG. NO.	

PRELIMINARY



--- CAST IN PLACE CONCRETE  
RAILING

[illegible]

## PRELIMINARY

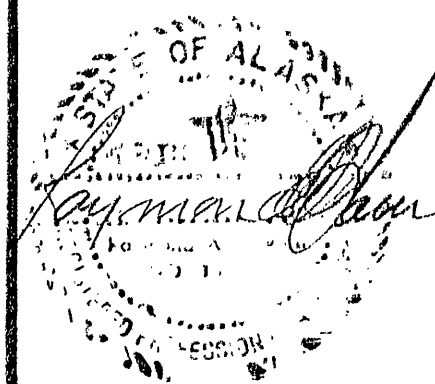
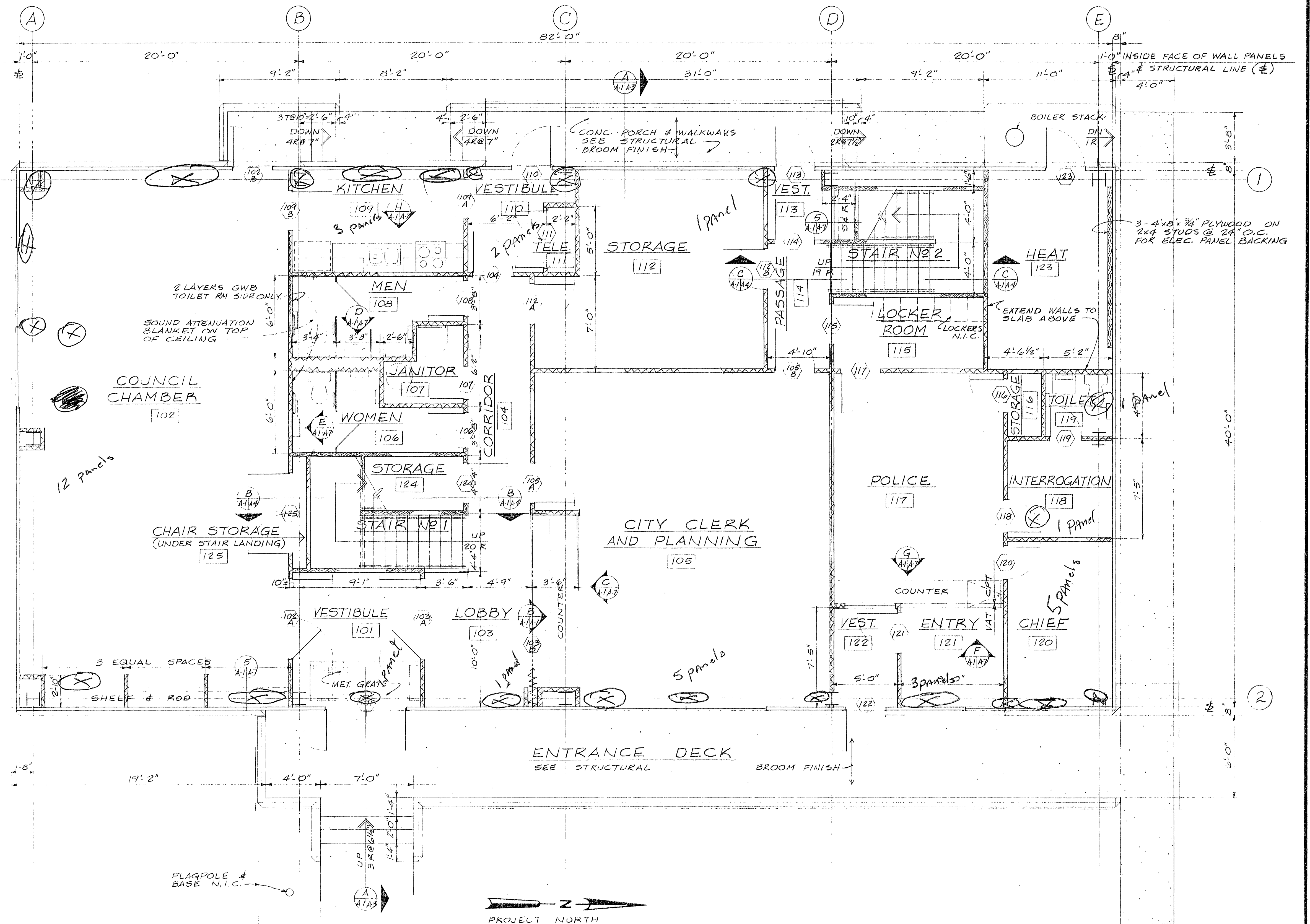


# GENERAL NOTES:

1. COMPLY WITH THE REQUIREMENTS OF THE UNIFORM BUILDING CODE, 1973 EDITION.
2. UNLESS OTHERWISE NOTED, PLAN DIMENSIONS ARE TO COLUMN GRID OR CENTERLINES, FACE OF STUDS AND FACE OF CONCRETE WALLS.
3. DO NOT SCALE DRAWINGS; USE NOTED DIMENSIONS.
4. FOR PARTITIONS USE EITHER 2 1/2" 25 GAGE METAL STUDS OR 2x3 WOOD STUDS AT 24" ON CENTER WITH 5/8" GYPSUM WALLBOARD APPLIED TO BOTH SIDES.
5. PROVIDE BLOCKING AND BACKING REQUIRED FOR WALL-HUNG ACCESSORIES AND EQUIPMENT.
6. "FLOOR LINE" REFERS TO TOP OF CONCRETE SLABS.

## LEGEND:

- WOOD STUD PARTITION
- METAL OR WOOD STUD PARTITION
- SOUND ATTENUATION BLANKET BETWEEN STUDS



DES. JJP					
DR. JJP					
CHK. JMY					
APPD.	NO.	DATE	REVISION	BY	APPD.

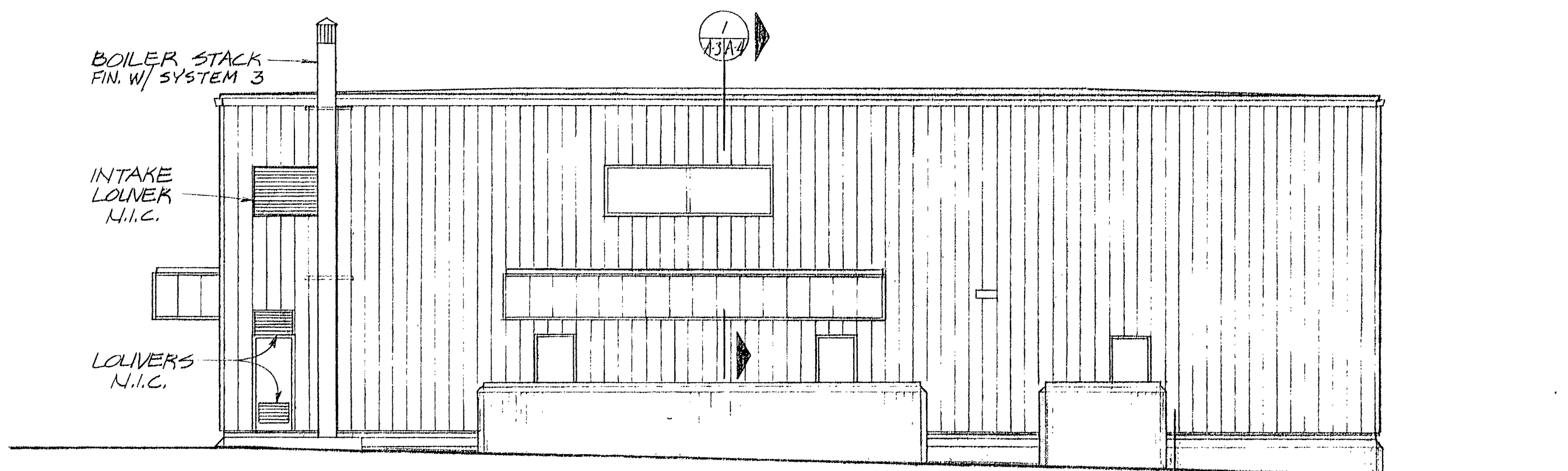
FIRST FLOOR PLAN 1/4"=1'-0"

CITY HALL FOR  
NOME, ALASKA

SHEET A-1
OF 7
PROJ. K9327.1
NO. 59355.1
DATE, JUNE 75
DWG. NO.

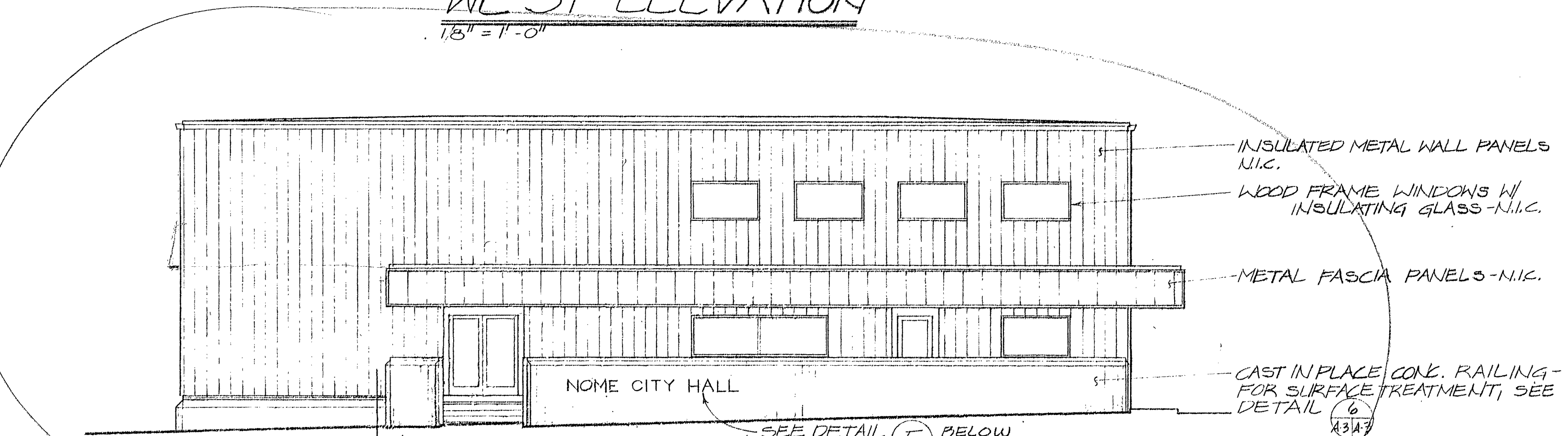






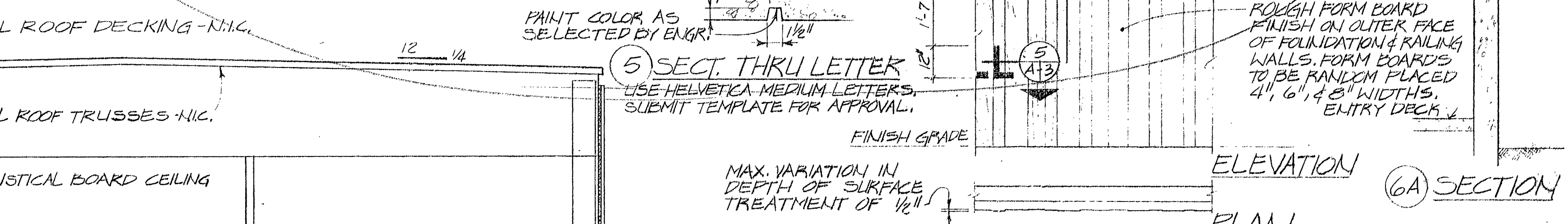
WEST ELEVATION  
1/8" = 1'-0"

2/33 OPP. HAND



EAST ELEVATION  
1/8" = 1'-0"

2/33

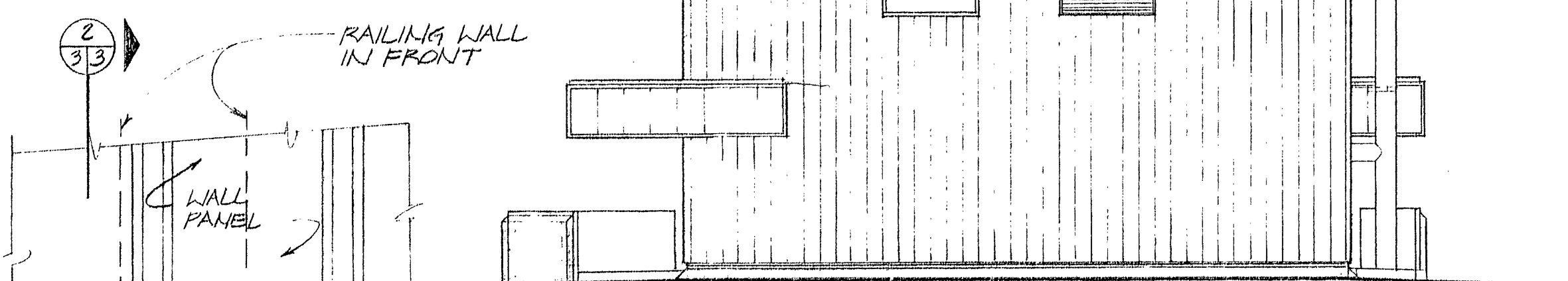


NORTH ELEVATION  
1/8" = 1'-0"

SOUTH ELEVATION  
1/8" = 1'-0"

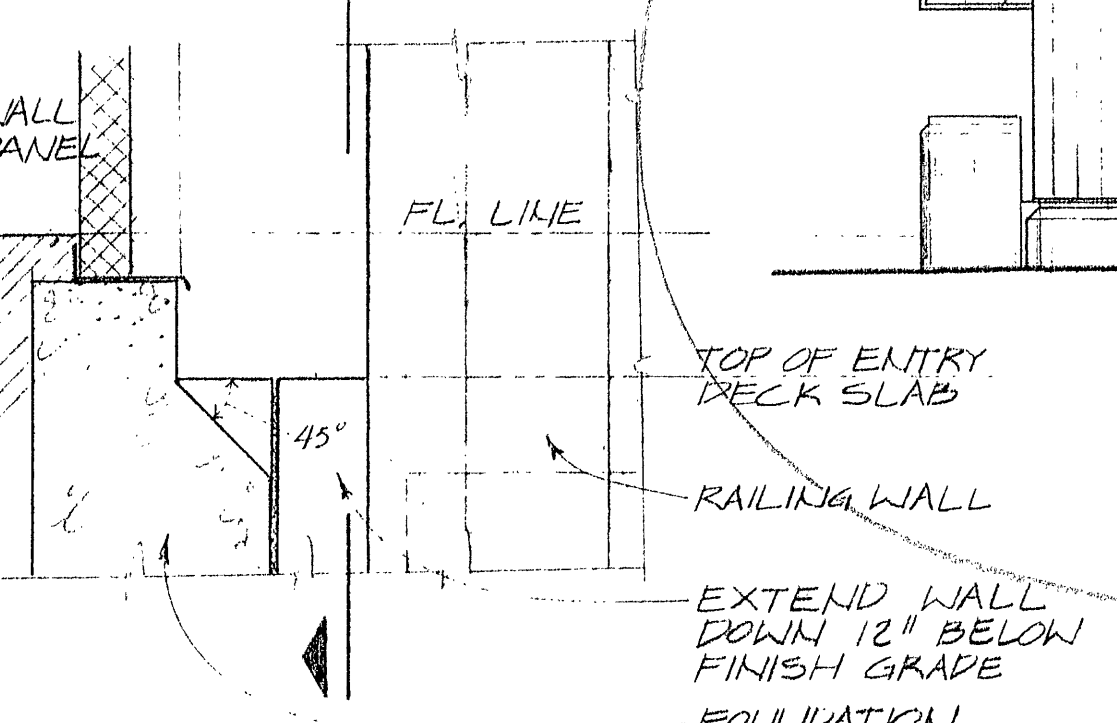
CROSS SECTION A  
1/4" = 1'-0"

A/1A3



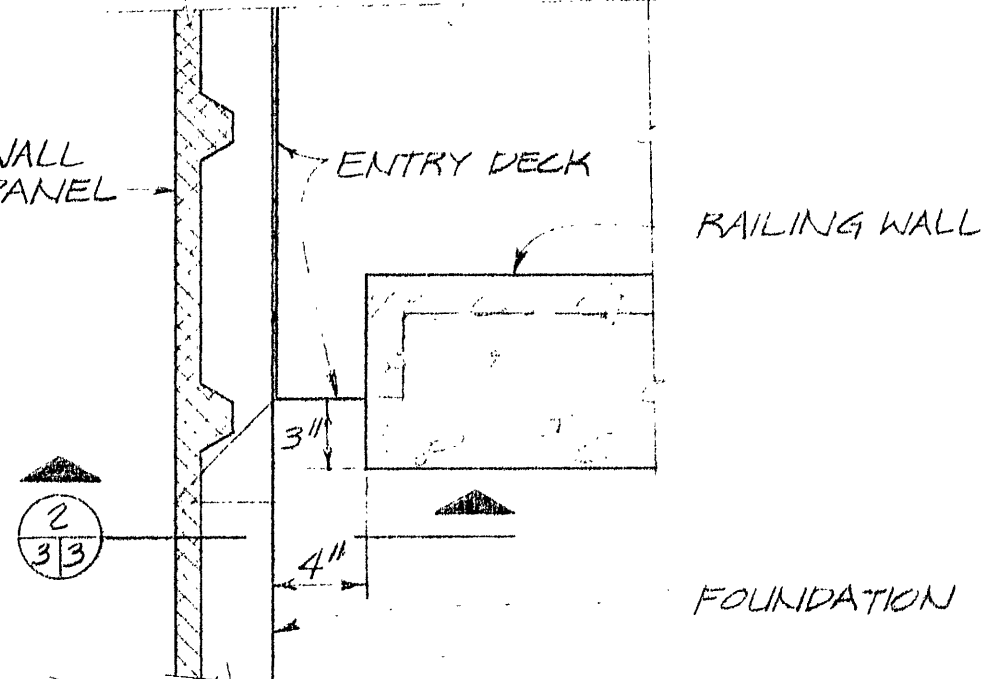
DETAIL 3  
1 1/2" = 1'-0"

3/33



SECTION 2  
1 1/2" = 1'-0"

A/3A/3



PLAN 1  
1 1/2" = 1'-0"

A/3A/3

ENTRY DECK/FOUNDATION  
WALL DETAILS - TYPICAL

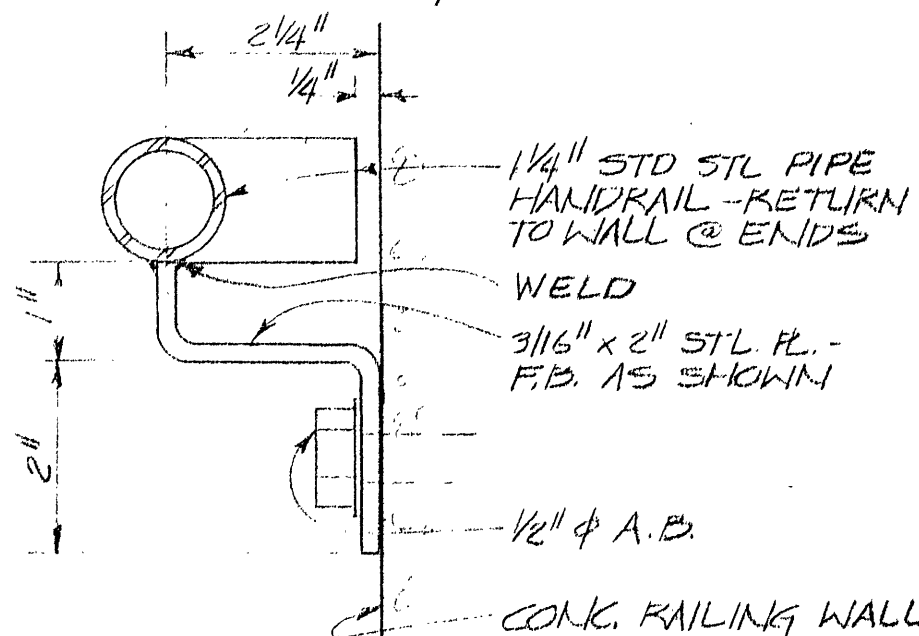
PAINT COLOR AS SELECTED BY ENGR.

5 SECT. THRU LETTER  
USE HELVETICA MEDIUM LETTERS, SUBMIT TEMPLATE FOR APPROVAL.

MAX. VARIATION IN DEPTH OF SURFACE TREATMENT OF 1/2"

CONCRETE FINISH DETAILS 6  
3/8" = 1'-0"

FINISH ENTRY DECKS, STAIRS & RAILING WALLS W/ PAINT SYSTEM 7



HANDRAIL DETAIL 4  
6" = 1'-0"

A/3A/3

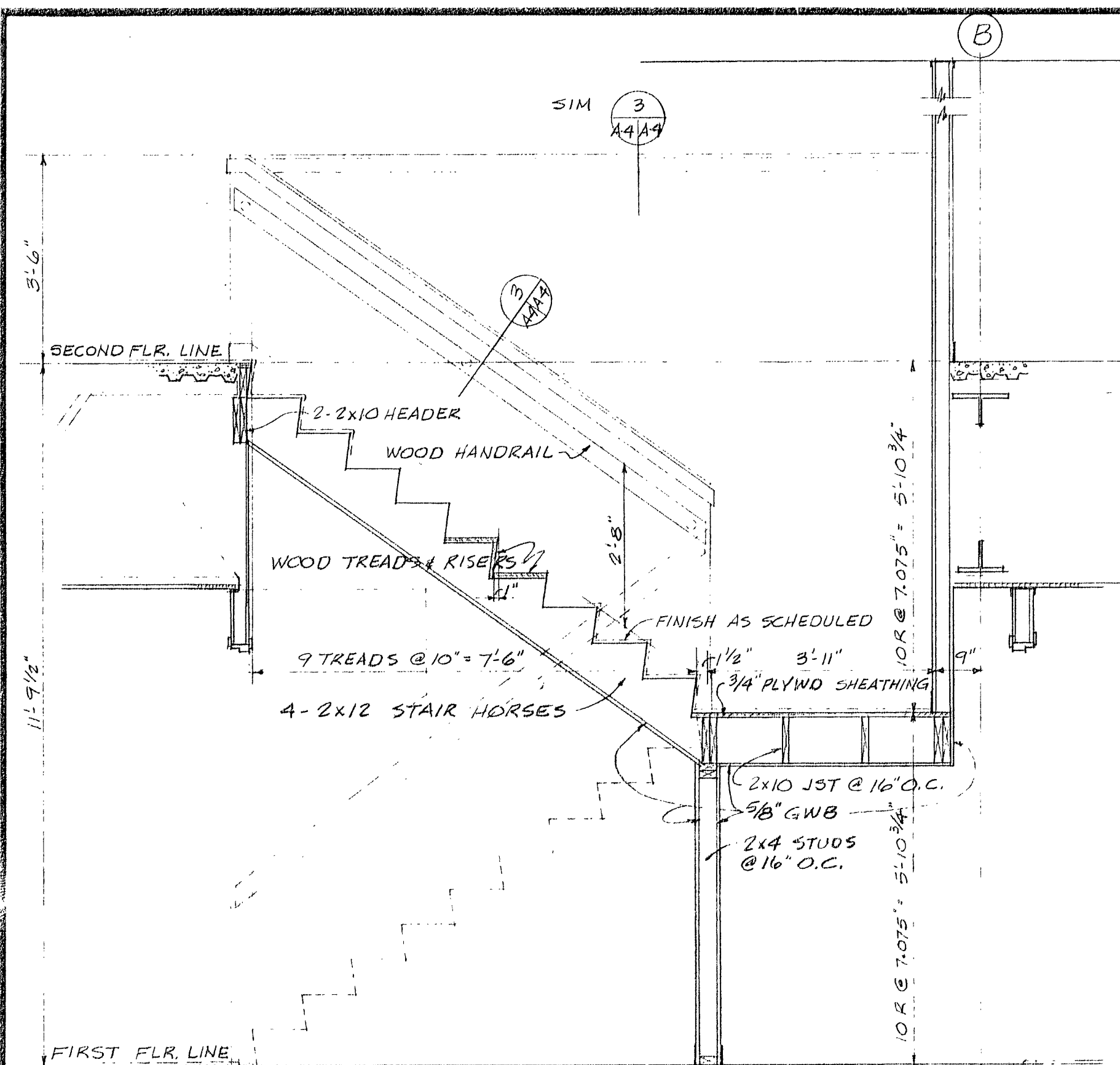
CH2M HILL	DES. JJP	DR. DH	CHK. JMY	APPD.	NO.	DATE	REVISION	BY	APPD.
-----------	----------	--------	----------	-------	-----	------	----------	----	-------

ELEVATIONS AND SECTION

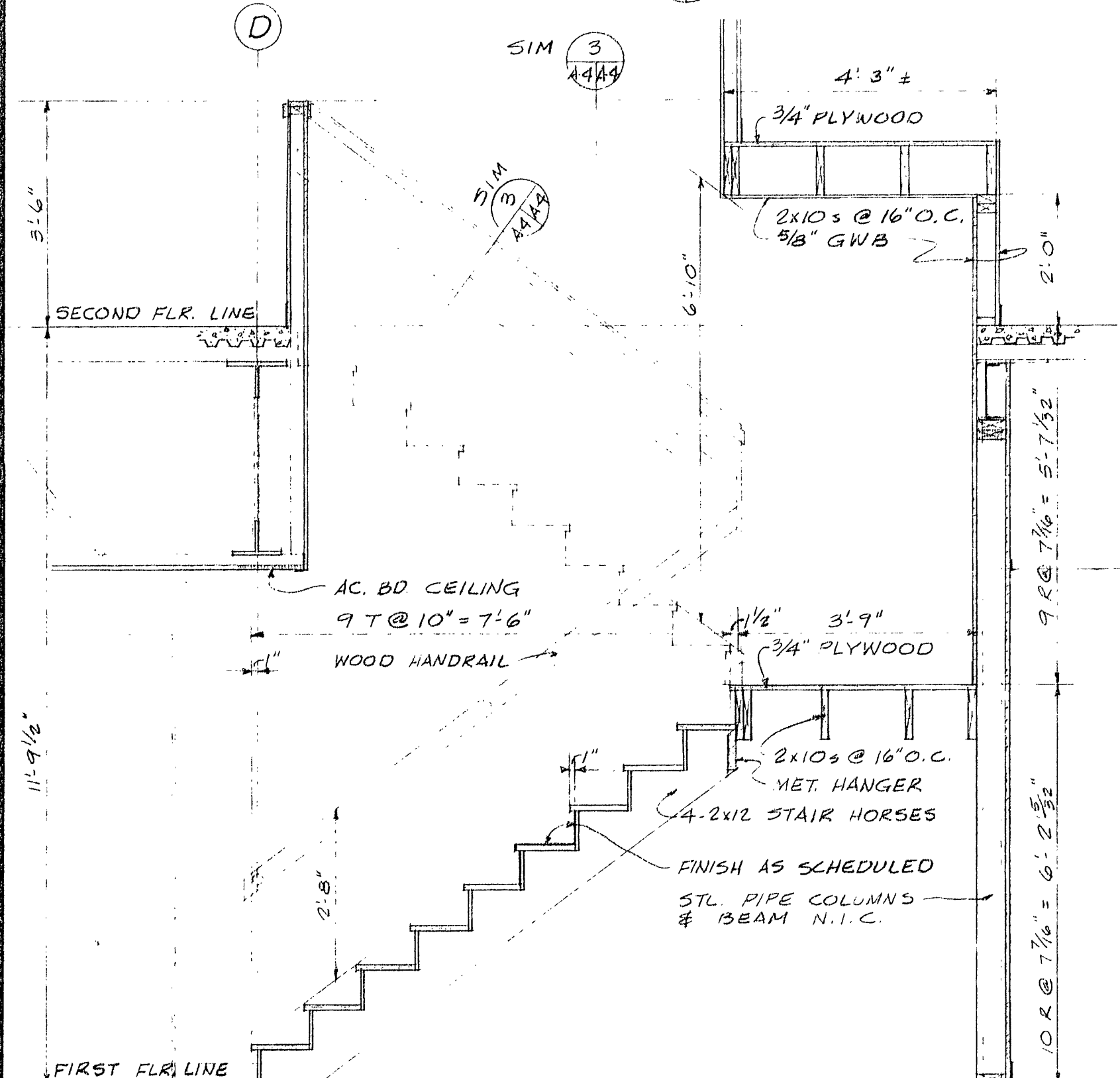
CITY HALL FOR  
NOME, ALASKA

SHEET OF 7	A-3
PROJ. K 9327.1	
NO. 59355.1	
DATE 27 JUNE 75	
DWG. NO.	

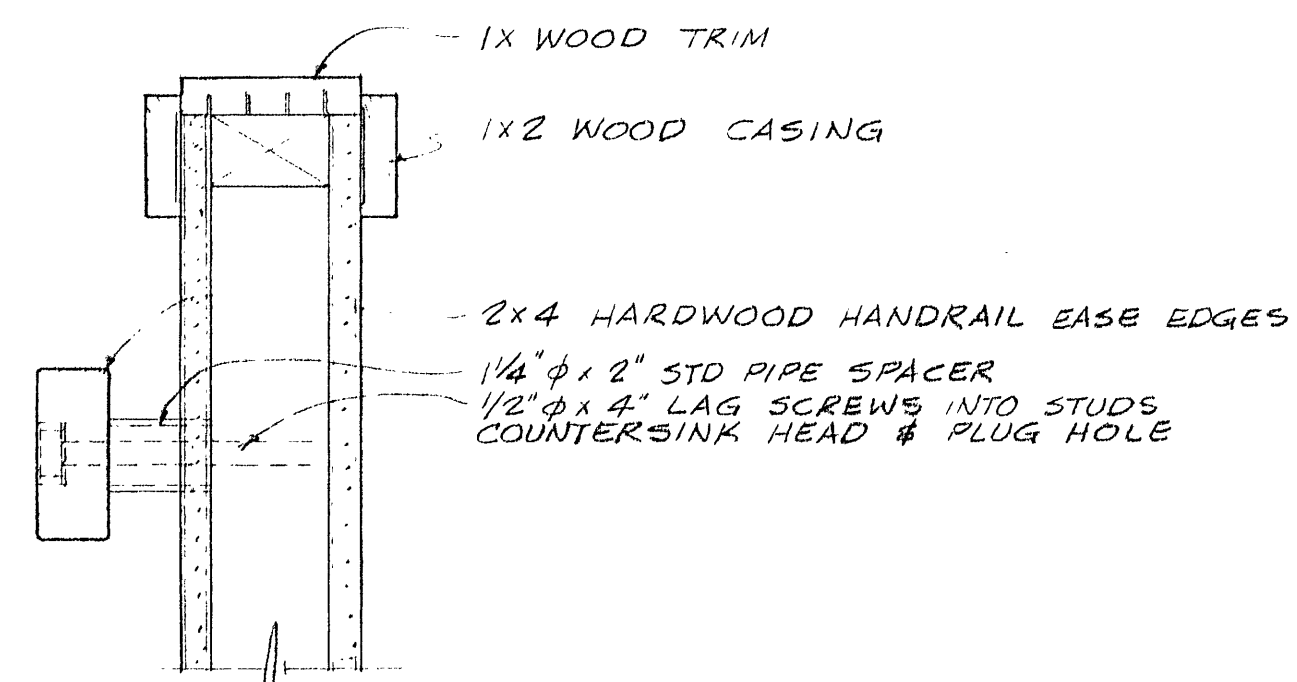




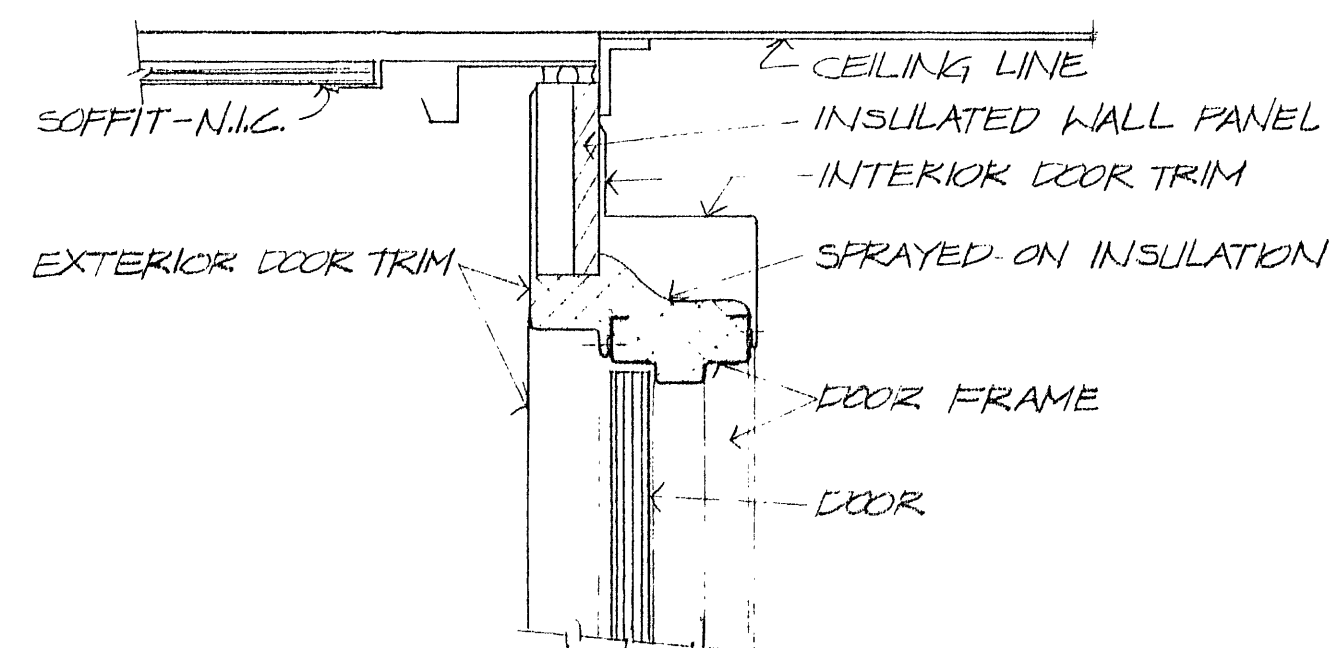
SECTION B STAIR NO 1  
1/2" = 1'-0"



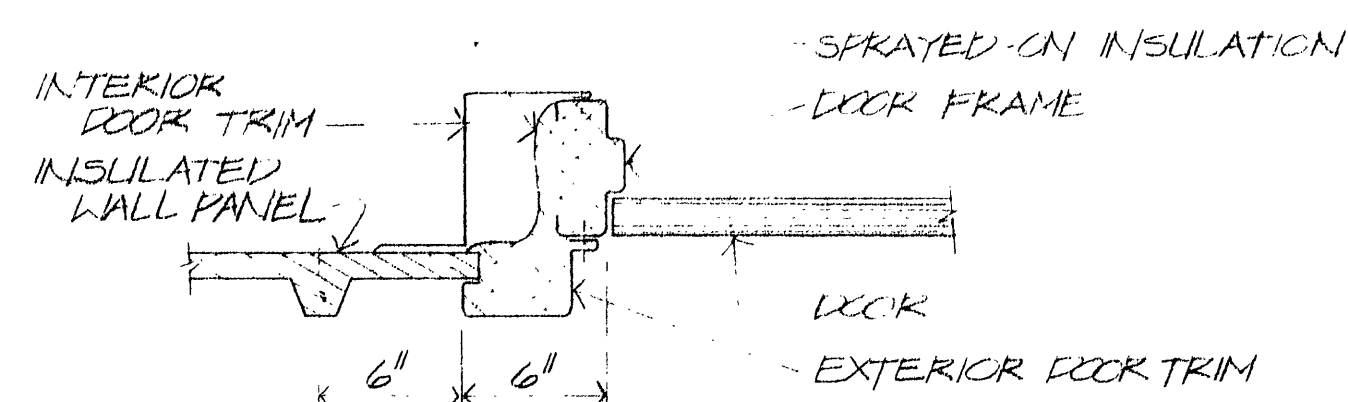
SECTION C STAIR NO 2  
1/2" = 1'-0"



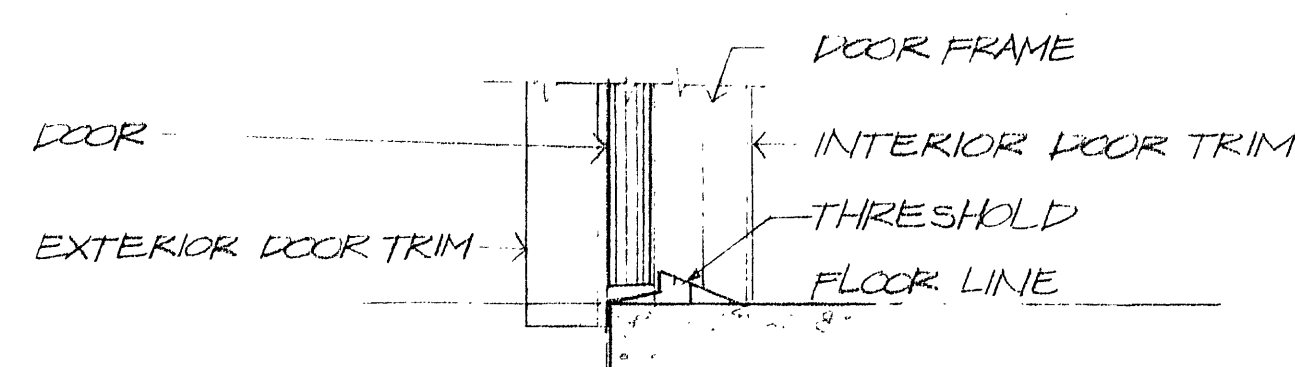
TYPICAL RAILING DETAIL 3  
3" = 1'-0"



HEAD SECTION

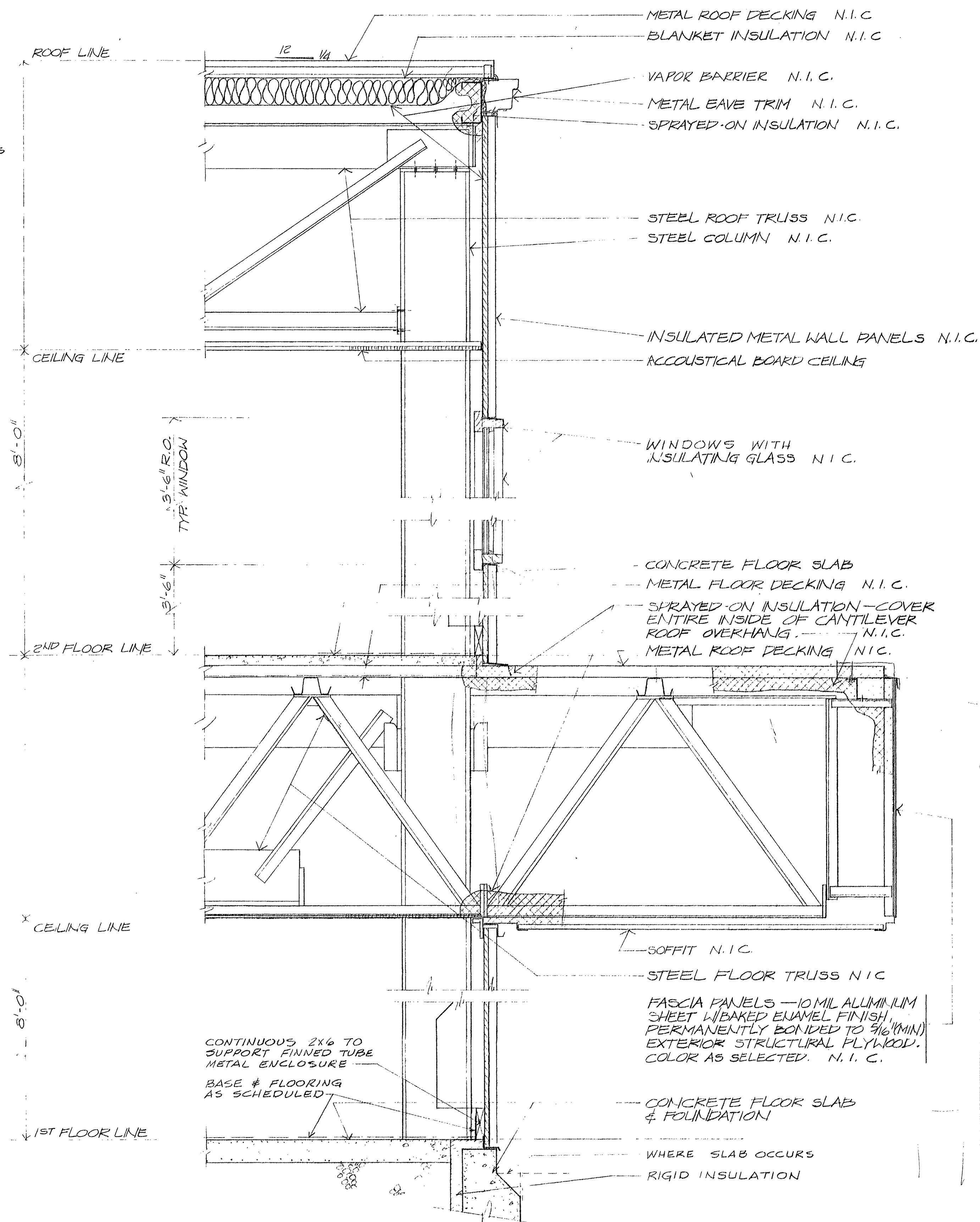


JAMB SECTION

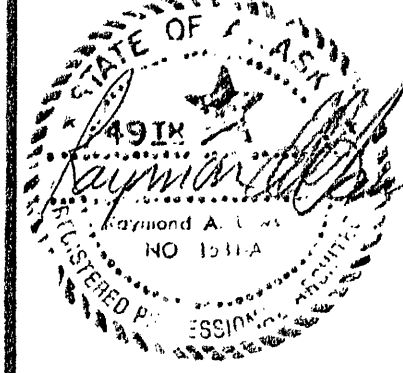


SILL SECTION

DOORWAY DETAILS 2  
1/2" = 1'-0" ALL ITEMS NOTED ARE PARTS OF PREFABRICATED METAL BLDG. & N.I.C.



TYPICAL WALL SECTION 1  
1" = 1'-0"



DES. JJP					
DR. JH					
CHK. JMY					
APPD.					
	NO.	DATE	REVISION	BY	APPD.

STAIR & WALL SECTIONS  
AND DETAILS

CITY HALL FOR  
NOME, ALASKA

SHEET A-4  
OF 7  
PROJ. K9327.1  
NO. 39353.1  
DATE 27 JUNE 75  
DWG. NO.



ROOM ACCESSORIES

NUMBERS USED ARE "BOBRICK WASHROOM EQUIPMENT, INC.", UNLESS NOTED OTHERWISE. TYPICAL MOUNTING HEIGHTS ARE SHOWN ON ROOM ELEVATIONS.

WOMEN 106 & 209

MIRROR W/SHELF (M&S) B-166 1622  
TOILET TISSUE DISPENSER (TPD) B-284  
FEMININE NAPKIN VENDOR (FNV) B-2802  
FEMININE NAPKIN DISPOSAL (FND) B-270  
SOAP DISPENSER (SD) B-85  
PAPER TOWEL DISPENSER (PTD) B-262  
WASTE RECEPTACLE (WR) B-279  
GRAB BAR (GB) B-490 x 12" (RM. 106 ONLY)  
GRAB BAR (GB) B-490 x 24" (RM. 106 ONLY)  
ROBE HOOK (RH) B-2116 (RM. 106 ONLY)

JANITOR 107 & 208

MOP & BROOM HOLDER (MBH) B-223 x 24"

MEN 108 & 207

MIRROR W/SHELF B-166 1622  
TOILET TISSUE DISPENSER B-284  
SOAP DISPENSER B-85  
PAPER TOWEL DISPENSER B-262  
WASTE RECEPTACLE B-279  
GRAB BAR B-490 x 12" (RM. 108 ONLY)  
GRAB BAR B-490 x 24" (RM. 108 ONLY)  
ROBE HOOK B-2116 (RM. 108 ONLY)

TOILET 119

MIRROR W/SHELF B-166 1622  
TOILET TISSUE DISPENSER B-284  
SOAP DISPENSER B-85  
PAPER TOWEL DISPENSER B-262  
WASTE RECEPTACLE B-279  
ROBE HOOK B-2116

NOTES

- CEILING HEIGHT IS 8'-0" IN ALL AREAS.
- FINISH CLOSETS AND ALCOVES THE SAME AS AREAS INTO WHICH THEY OPEN.
- INTERIOR SIDE OF EXTERIOR METAL WALL PANELS ARE FACTORY FINISHED AND ARE NOT TO BE PAINTED IN THIS CONTRACT, UNLESS SPECIFICALLY NOTED IN SCHEDULE.
- AT CONTRACTOR'S OPTION SEAMLESS FLOORING MAY BE SUBSTITUTED FOR VINYL ASBESTOS TILE.
- FINISH ALL INTERIOR WOOD TRIM WITH SYSTEM NUMBER 2, COLOR "R".
- FINISH WOOD WINDOW FRAMES INSIDE AND OUT WITH SYSTEM NUMBER 1, COLOR "H".

PAINT SYSTEMS

- WOOD (PAINTED)  
1 COAT ALKYD OR LATEX WOOD PRIMER  
1 COAT ALKYD FINISH, SEMIGLOSS
- WOOD (STAINED & VARNISHED)  
1 COAT WOOD STAIN  
1 COAT ALKYD SANDING SEALER  
1 COAT ALKYD VARNISH, GLOSS, SANDED  
1 COAT ALKYD VARNISH, SATIN
- METAL  
1 COAT PRIMER  
2 COATS ALUMINUM PAINT - HIGH HEAT
- GYPSUM WALLBOARD (ALKYD)  
1 COAT LATEX OR ALKYD PRIMER SEALER  
1 COAT INTERIOR ALKYD STIPPLE, SEMIGLOSS
- GYPSUM WALLBOARD (LATEX)  
1 COAT LATEX PRIMER SEALER  
1 COAT INTERIOR LATEX STIPPLE, SEMIGLOSS
- FERROUS METAL (SHOP PRIMED)  
TOUCH-UP WALKYD RUST INHIBITIVE PRIMER  
1 COAT ALKYD ENAMEL, SEMIGLOSS
- CONCRETE  
2 COATS CLEAR ACRYLIC RESIN SEALER

COLORS

- A. CARPET: ARMSTRONG OUTRIGHT SERIES #105-G34 ASPEN
- B. VAT ARMSTRONG EXCELOX SUPREME #55504 CREAM
- C. SEAMLESS FLOOR & WALL COVERING: TORGIVOL #30204 HILLO YELLOW
- D. HARDENER: L.M. SCOFIELD CO. A-30 OAK
- E. STAIR TREADS & RISERS: BURKE #109
- F. BASE: BURKE #598-P DARK BROWN
- G. PAINT: PRATT & LAMBERT #5591, GILT
- H. PAINT: P&L #2615, SNOFLAKE
- I. PAINT: P&L #5523-1, SUDAN IVORY
- J. PAINT: P&L #3103, SALEM STRAW
- K. PAINT: P&L #3015, WAXEN YELLOW
- L. PAINT: P&L #2557 VANILLA
- M. PLASTIC LAMINATE: FORMICA #866 GREEN OLIVE
- N. PLASTIC LAMINATE: FORMICA #868 ABSINTH
- O. PLASTIC LAMINATE: FORMICA #881 POPPY
- P. TOILET PARTITIONS: MID SOUTH #92M24 SPANISH OLIVE
- Q. TOILET PARTITIONS: MID SOUTH #92M26 HARVEST
- R. WOOD DOORS, FRAMES, TRIM, CABINET FACES: PRATT & LAMBERT STAIN, TRIM EFFECT T32 VEGG
- S. KICK & PUSH PLATES: DARK BROWN
- T. N.I.C. DRAPES: BEIGE WITH LOOSE WOVEN SHADES OF ORANGE, GREEN & GOLD

ROOM FINISH SCHEDULE

LOCATION	ROOM	ROOM NAME	FLOOR		BASE & WAINSCOT		WALLS		CEILING		REMARKS
			MATERIAL	FINISH	MATERIAL	FINISH	MATERIAL	FINISH	MATERIAL	FINISH	
FIRST FLOOR	101	VESTIBULE	CONC.	HD	4" RUB	F	GWB /MET	4-H/F	AC	BD	F *PAINT WEST WALL COLOR "G"
	102	COUNCIL CHAMBER	CPT	F	4" RUB	F	GWB /MET	4-H/F*	AC	BD	F *PAINT METAL PANELS ONLY ON SOUTH WALL W/COLOR "G"
	103	LOBBY	CPT	F	4" RUB	F	GWB /MET	4-H/F	AC	BD	F
	104	CORRIDOR	CPT	F	4" RUB	F	GWB	4-H	AC	BD	F
	105	CITY CLERK & PLANNING	CPT	F	4" RUB	F	GWB /MET	*5-H/F	AC	BD	F *PAINT NORTH WALL COLOR "G"
	106	WOMEN	CONC	SMLS	GWB 4'-0"	SMLS	GWB	4-I	AC	BD	F WAINSCOT ON ALL WALLS TOILET PARTITIONS COLOR "P"
	107	JANITOR	CONC	SMLS	GWB 4'-0"	SMLS	GWB	4-H	AC	BD	F WAINSCOT ON ALL WALLS
	108	MEN	CONC	SMLS	GWB 4'-0"	SMLS	GWB	4-I	AC	BD	F WAINSCOT ON ALL WALLS TOILET PARTITIONS COLOR "P"
	109	KITCHEN	VAT	F	4" RUB	F	GWB /MET	4-I/F	AC	BD	F
	110	VESTIBULE	CONC	HD	4" RUB	F	GWB /MET	4-H/F	AC	BD	F
	111	TELEPHONE	CONC	HD	4" RUB	F	GWB	5/H	X	-	-
	112	STORAGE	CONC	HD	4" RUB	F	GWB /MET	5-H/F	AC	BD	F
	113	VESTIBULE	CONC	HD	4" RUB	F	GWB /MET	4-H/F	AC	BD	F
	114	PASSAGE	VAT	F	4" RUB	F	GWB	4-H	AC	BD	F
	115	LOCKER ROOM	VAT	F	4" RUB	F	GWB	4-H	AC	BD	F
	116	STORAGE	VAT	F	4" RUB	F	GWB	5-H	AC	BD	F
	117	POLICE	CPT	F	4" RUB	F	GWB	4-H*	AC	BD	F *PAINT WEST WALL COLOR "J"
	118	INTERROGATION	CONC	SMLS	GWB/MET 4'-0"	SMLS	GWB /MET	4-L/F	AC	BD	F WAINSCOT ON ALL WALLS
	119	TOILET	CONC	SMLS	GWB/MET 4'-0"	SMLS	GWB /MET	4-L/F	AC	BD	F WAINSCOT ON ALL WALLS
	120	CHIEF	CPT	F	4" RUB	F	GWB /MET	5-K/F	AC	BD	F
	121	ENTRY	VAT	F	4" RUB	F	GWB /MET	4-H/F	AC	BD	F
	122	VESTIBULE	CONC	HD	4" RUB	F	GWB /MET	4-H/F	AC	BD	F
	123	HEAT	CONC	HD	4" RUB	F	GWB /MET	-/F	X	-	-
	124	STORAGE	CONC	HD	4" RUB	F	GWB	-	GWB	-	-
	125	CHAIR STORAGE	CONC	HD	4" RUB	F	GWB	4-H	GWB	4-H	-
SECOND FLOOR	201	CORRIDOR	CPT	F	4" RUB	F	GWB	*5-H	AC	BD	F PAINT EAST WALL COLOR "J"
	202	STORAGE	CONC	HD	4" RUB	F	GWB /MET	5-H/F	AC	BD	F
	203	FINANCE & ACCTS.	CPT	F	4" RUB	F	GWB /MET	5-H/F	AC	BD	F
	204	AUDITOR	CPT	F	4" RUB	F	GWB /MET	5-K/F	AC	BD	F
	205	BILLING	CPT	F	4" RUB	F	GWB /MET	5-K/F	AC	BD	F
	206	COPIER	CPT	F	4" RUB	F	GWB /MET	5-H/F	AC	BD	F
	207	MEN	CONC	SMLS	GWB 4'-0"	SMLS	GWB	4-J	AC	BD	F WAINSCOT ON ALL WALLS TOILET PARTITIONS COLOR "Q"
	208	JANITOR	CONC	SMLS	GWB 4'-0"	SMLS	GWB	4-H	AC	BD	F WAINSCOT ON ALL WALLS
	209	WOMEN	CONC	SMLS	GWB 4'-0"	SMLS	GWB	4-I	AC	BD	F WAINSCOT ON ALL WALLS TOILET PARTITIONS COLOR "Q"
	210	RECEPTION	CARPET	F	4" RUB	F	GWB /MET	*5-H/F	AC	BD	F *PAINT WEST WALL COLOR "J"
	211	CITY MANAGER	CARPET	F	4" RUB	F	GWB /MET	*5-H/F	AC	BD	F *PAINT WEST WALL COLOR "J"
STAIRS	212	UTILITIES MANAGER	CARPET	F	4" RUB	F	GWB /MET	5-K/F	AC	BD	F
	213	UTILITIES SUPERVISOR	CARPET	F	4" RUB	F	GWB /MET	5-K/F	AC	BD	F
	214	PUB. WORKS DIR.	CARPET	F	4" RUB	F	GWB	5-K/F	AC	BD	F
	215	UTIL. & PUB. WKS.	CARPET	F	4" RUB	F	GWB /MET	*5-H/F	AC	BD	F *PAINT EAST WALL COLOR "J"
	216	MECH. EQUIPMENT	CONC	HD	4" RUB	F	GWB /MET	-/F	AC	BD	F
		STAIR NO. 1	CPT	F	4" RUB	F	GWB	4-H*	AC	BD	F *PAINT SOUTH WALL COLOR "G"
		STAIR NO. 2	RUB*	F	4" RUB	F	GWB	4-H	AC	BD	F *TREADS, RISERS, & LANDINGS

SCHEDULE ABBREVIATIONS

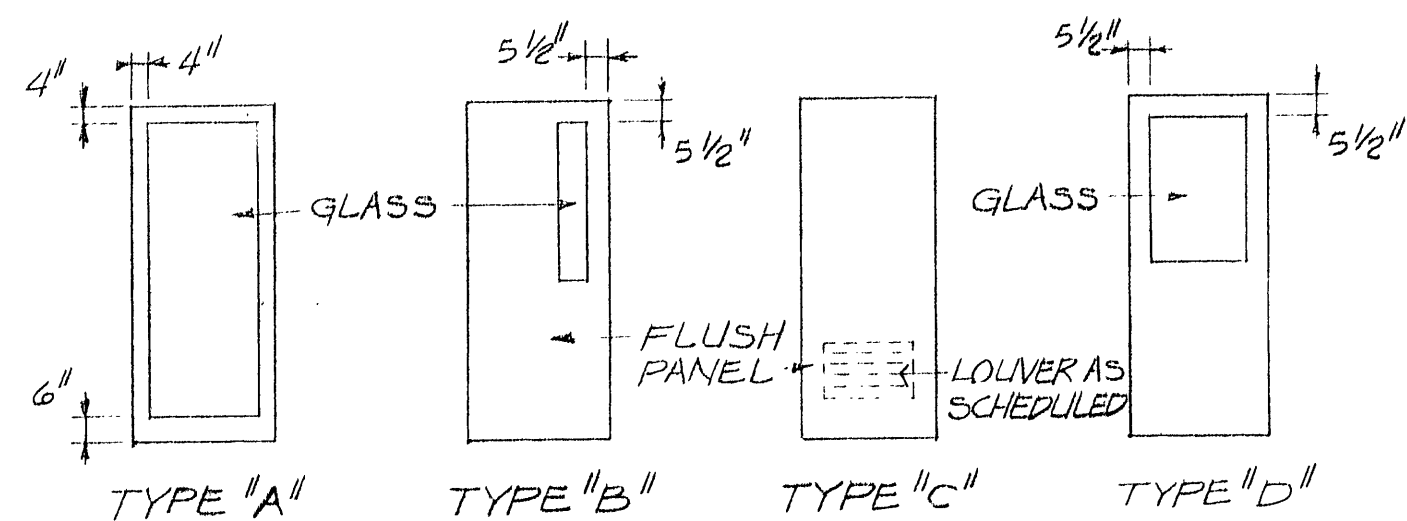
AC BD	ACOUSTICAL BOARD	X	EXPOSED STRUCTURE
CONC	CONCRETE	VAT	VINYL-ASBESTOS TILE
CPT	CARPET	HC	HOLLOW CORE
F	FACTORY FINISH	HM	HOLLOW METAL
		KA	KEYED ALIKE
GWB	GYPSUM WALLBOARD	HD	KEYED DIFFERENT
MET	METAL	HD	HARDENER
RUB	RUBBER	PL	PLATE
SMLS	SEAMLESS FLOOR AND WALL COVERING	SC	SOLID CORE
		WD	WOOD

ROOM FINISH SCHEDULE

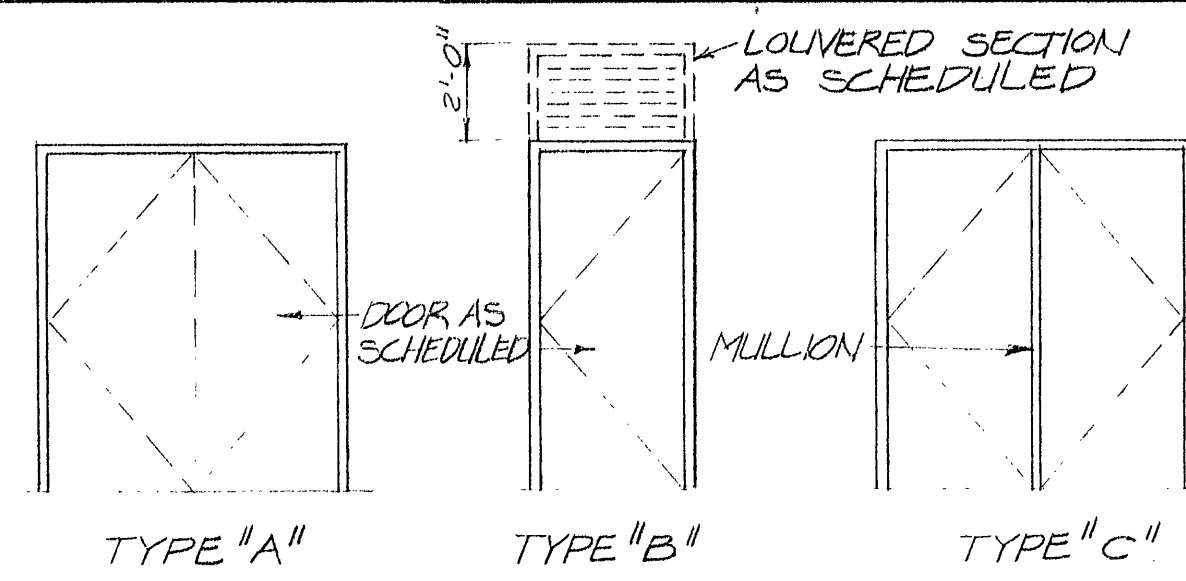
CITY HALL FOR  
HOME, ALASKA

SHEET  
OF 7 Δ-5  
PROJ. K9327.1  
NO. 59252.1  
DATE JUNE 75  
DWG. NO.

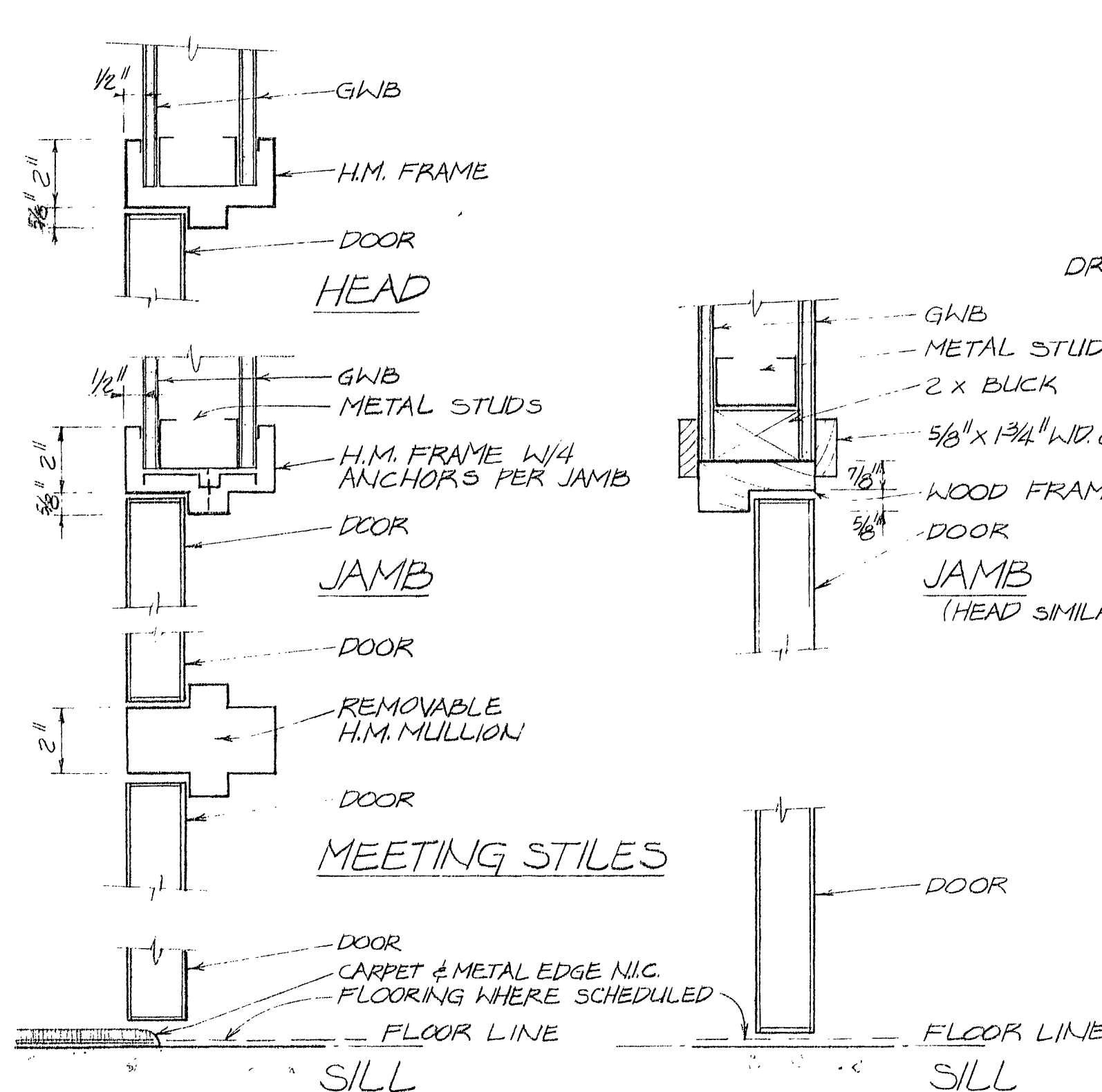




DOOR TYPES



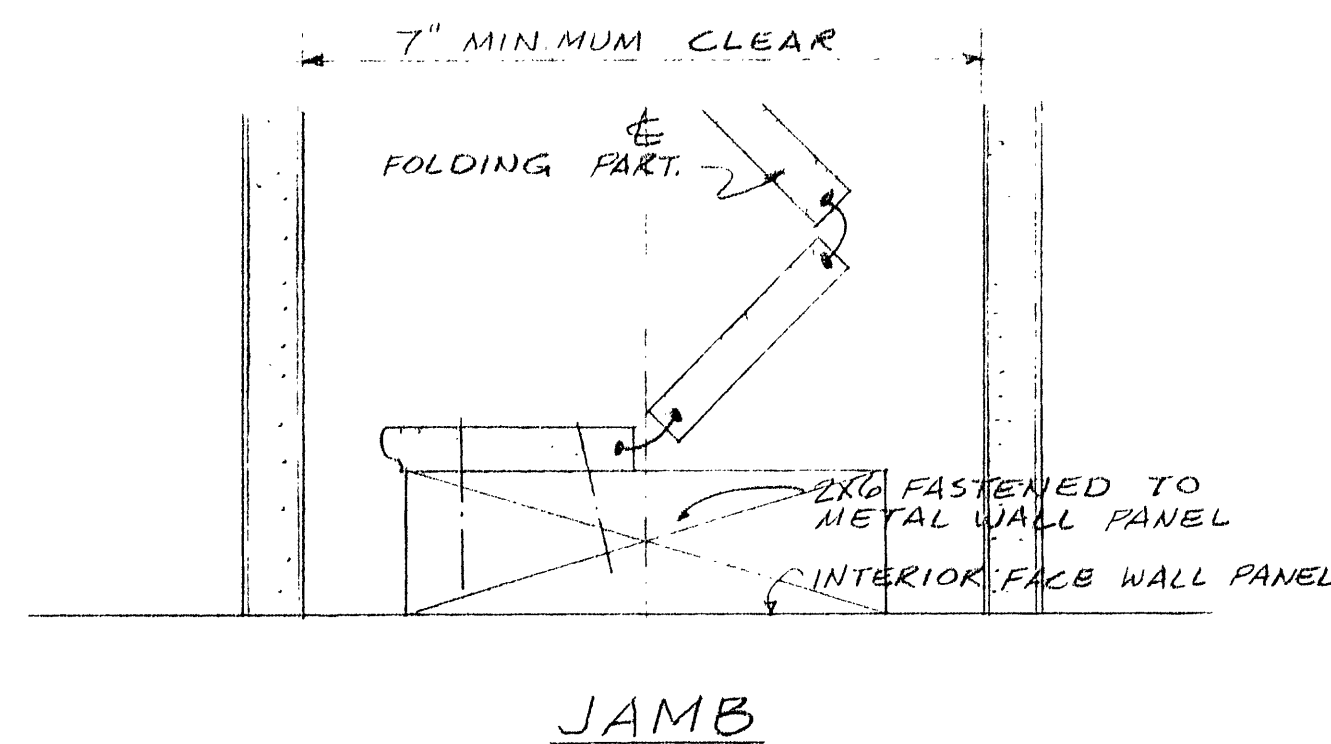
FRAME TYPES



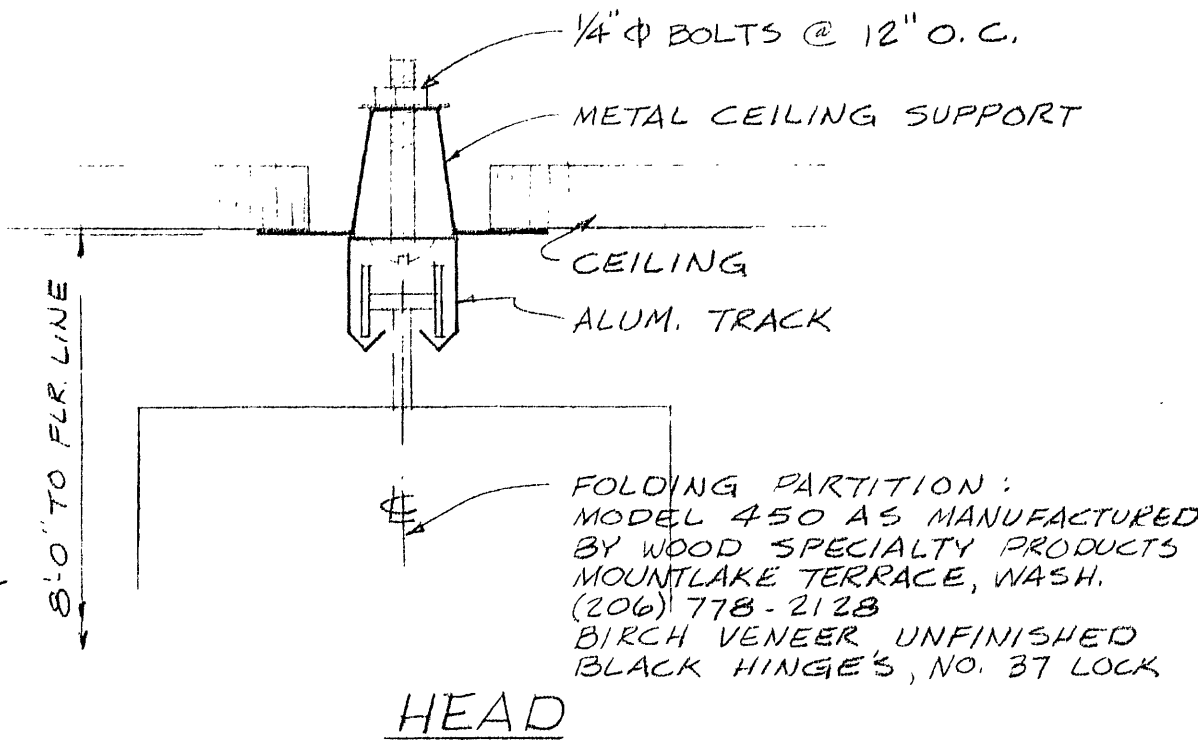
DOOR DETAIL 1  
3 1/2" = 1'-0"

DOOR DETAIL 2  
3 1/2" = 1'-0"

DOOR DETAIL 3  
3 1/2" = 1'-0"



JAMB



HEAD

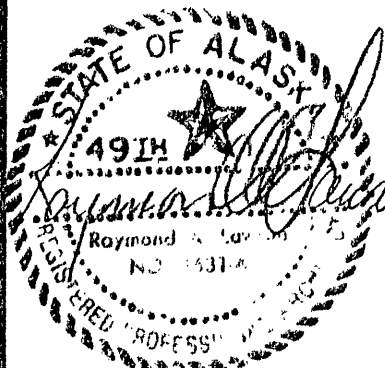
FOLDING PARTITION DET. 4  
1/2 FULL SIZE

# DOOR AND FRAME SCHEDULE

DOOR AND FRAME SCHEDULE																	
LOCATION	NO.	OPENING						FRAME					HARDWARE		REMARKS		
		SIZE		DOOR				TYPE	MAT- ERIAL	FIN- ISH	DETAILS			SET Nº		KEY GROUP	
		W	H	THICK.	TYPE	MATERIAL	FINISH				GLASS	HEAD	JAMB				SILL
FIRST FLOOR	101	6'-0"	7'-0"	1 3/4"	2x A	HM	G-H	1/4" P	A	HM	G-H	2(A-G/A-H)	2(A-G/A-H)	2(A-G/A-H)	1	KA-1	BY METAL BLDG. MFR.
	102 A	6'-2	7'-0	1 3/4	2x B	SC WD	2-R	1/4" P	C	HM	G-H	1	1	1	2	KA-1	
	102 B	3-0	6-0	1 3/4	C	HM	G-H	-	B	HM	G-H	3	3	3	3	-	BY METAL BLDG. MFR.
	103 A	6'-2	7'-0	1 3/4	2x B	SC WD	2-R	1/4" P	C	HM	G-H	1	1	1	4	-	
	104	3-0	7'-0	1 3/4	C	SC WD	2-R	-	B	WD	2-R	2	2	1	5	-	
	105 A	3-0	7'-0	1 3/4	C	SC WD	2-R	-	B	WD	2-R	2	2	2	6	KA-2	
	105 B	3-0	7'-0	1 3/4	C	SC WD	2-R	-	B	WD	2-R	2	2	1	6	KA-2	
	106	2-8	7'-0	1 3/4	C	SC WD	2-R	-	B	WD	2-R	2	2	1	7	-	SIGN: "WOMEN"
	107	2-6	7'-0	1 3/4	C	SC WD	2-R	-	B	WD	2-R	2	2	1	6	KA-3	
	108	2-8	7'-0	1 3/4	C	SC WD	2-R	-	B	WD	2-R	2	2	1	7	-	SIGN: "MEN"
	109 A	3-0	7'-0	1 3/4	C	SC WD	2-R	-	B	WD	2-R	2	2	1	6	KA-1	
	109 B	3-0	7'-0	1 3/4	B	SC WD	2-R	1/4" P	B	WD	2-R	2	2	1	6	KA-1	
	110	3-0	7'-0	1 3/4	C	HM	G-H	-	B	HM	G-H	3	3	3	8	KA-1	BY METAL BLDG. MFR.
	111	4'-4"	7'-0	1 3/8	2x C	HC WD	2-K	-	B	WD	2-R	2	2	2	9	KA-3	
	112 A	3-0	7'-0	1 3/4	C	SC WD	2-R	-	B	WD	2-K	2	2	1	6	KA-2	
	112 B	3-0	7'-0	1 3/4	C	SC WD	2-R	-	B	WD	2-R	2	2	2	6	KA-2	
	113	3-0	7'-0	1 3/4	B	HM	G-H	1/4" P	B	HM	G-H	3	3	3	8	KA-2	BY METAL BLDG. MFR.
	114	3-0	7'-0	1 3/4	B	SC WD	2-R	1/4" P	B	WD	2-K	2	2	2	5	-	
	115	3-0	7'-0	1 3/4	C	SC WD	2-R	-	B	WD	2-R	2	2	2	10	KA-4	
	116	2-6	7'-0	1 3/8	C	HC WD	2-R	-	B	WD	2-R	2	2	1	6	KA-4	
	117	3-0	7'-0	1 3/4	C	SC WD	2-R	-	B	WD	2-R	2	2	1	11	-	
	118	2-6	7'-0	1 3/4	B	SC WD	2-R	1/4" P	B	WD	2-R	2	2	1	12	KA-4	
	119	2-4	7'-0	1 3/8	C	HC WD	2-R	-	B	WD	2-R	2	2	2	13	-	
	120	2-6	7'-0	1 3/4	C	SC WD	2-R	-	B	WD	2-R	2	2	2	6	KD	
	121	3-0	7'-0	1 3/4	B	SC WD	2-R	1/4" WIRE	B	HM	G-H	1	1	2	5	-	
122	3-0	7'-0	1 3/4	B	HM	G-H	1/4" WIRE	B	HM	G-H	2(A-G/A-H)	2(A-G/A-H)	2(A-G/A-H)	8	KA-4	BY METAL BLDG. MFR.	
123	3-0	7'-0	1 3/4	C	HM	G-H	-	B	HM	G-H	3	3	3	14	KA-3	BY METAL BLDG. MFR. ②	
124	6-0	7'-0	1 3/4	C	SC WD	2-R	-	B	WD	2-R	2	2	1	6	KA-3		
125	6-0	7'-0	1 3/8	C	HC WD	2-R	-	B	WD	2-R	2	2	1	15	-		
103 B VERIFY	14'-0"	8-0	-	-	WD	2-R	-	-	-	-	4	4	2	-	KA-2	FOLDING PARTITION	
SECOND FLOOR	202 A	3-0	7'-0	1 3/4	C	SC WD	2-R	-	B	WD	2-R	2	2	1	6	KA-2	
	202 B	3-0	7'-0	1 3/4	C	SC WD	2-R	-	B	WD	2-R	2	2	1	6	KA-2	
	203	3-0	7'-0	1 3/4	D	SC WD	2-R	1/4 P	B	WD	2-R	2	2	2	6	KA-2	
	204	3-0	7'-0	1 3/4	D	SC WD	2-R	1/4 P	B	WD	2-R	2	2	2	16	-	
	205	3-0	7'-0	1 3/4	C	SC WD	2-R	-	B	WD	2-R	2	2	2	16	-	
	206	3-0	7'-0	1 3/4	B	SC WD	2-R	1/4 P	B	WD	2-R	2	2	2	6	KA-2	
	207	2-8	7'-0	1 3/4	C	SC WD	2-R	-	B	WD	2-R	2	2	1	7	-	SIGN: "MEN"
	208	2-6	7'-0	1 3/4	C	SC WD	2-R	-	B	WD	2-R	2	2	1	6	KA-3	
	209	2-8	7'-0	1 3/4	C	SC WD	2-R	-	B	WD	2-R	2	2	1	7	-	SIGN: "WOMEN"
	210	3-0	7'-0	1 3/4	D	SC WD	2-R	1/4 P	B	WD	2-R	2	2	2	6	KA-2	SIGN: "CITY MANAGER"
	211 A	3-0	7'-0	1 3/4	C	SC WD	2-R	-	B	WD	2-R	2	2	2	16	-	
	211 B	3-0	7'-0	1 3/4	B	SC WD	2-R	1/4 P	B	WD	2-R	2	2	2	6	KA-2	
	212	3-0	7'-0	1 3/4	B	SC WD	2-R	1/4 P	B	WD	2-R	2	2	2	6	KA-2	
	213	3-0	7'-0	1 3/4	B	SC WD	2-R	1/4 P	B	WD	2-R	2	2	2	16	-	
	214	3-0	7'-0	1 3/4	B	SC WD	2-R	1/4 P	B	WD	2-R	2	2	2	16	-	
	215 A	3-0	7'-0	1 3/4	D	SC WD	2-R	1/4 P	B	WD	2-R	2	2	2	6	KA-2	SIGN: "UTILITIES" & "PUBLIC WORK"
215 B	3-0	7'-0	1 3/8	C	HC WD	2-R	-	B	WD	2-R	2	2	2	16	-		
216	3-0	7'-0	1 3/4	C	SC WD	2-R	-	B	WD	2-R	2	2	1	6	KA-3	3/4 HOUR RATING	

## NOTES:

- 2x denotes 2 doors at that opening.
- 23' x 16" LOUVER IN DOOR BOTTOM. 36" x 22" LOUVER ABOVE DOOR.
- SEE DRAWING A-5 FOR FINISHES AND ABBREVIATIONS.
- SEE SPECIFICATION SECTION 2A FOR HARDWARE SETS.
- PAINT DOOR BUTT HINGES TO MATCH FRAME.
- KEY GROUP "KA-2" TO PASS "KA-1"; KA-4 TO PASS "KA-1" & "KA-2"



CH2M HILL

ALASKA

DES. JJP  
DR. JH  
CHK. JMY  
APPD.

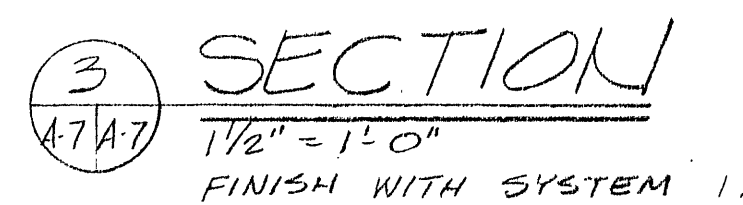
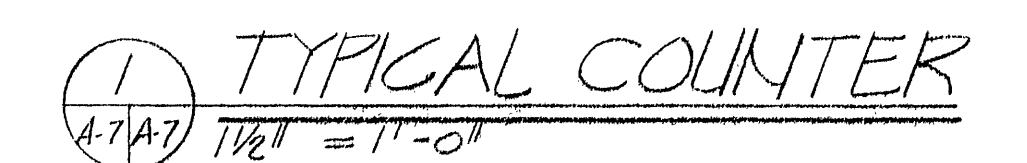
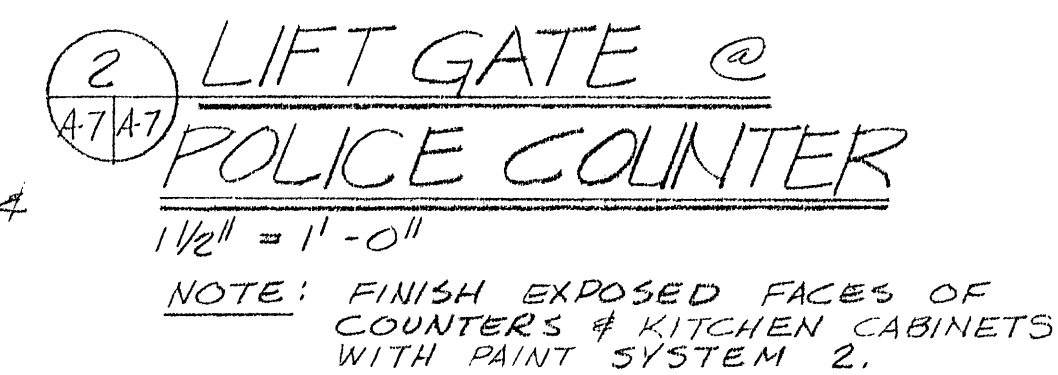
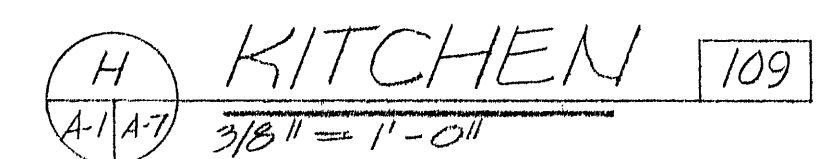
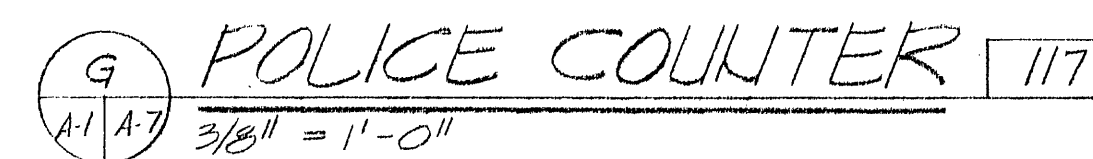
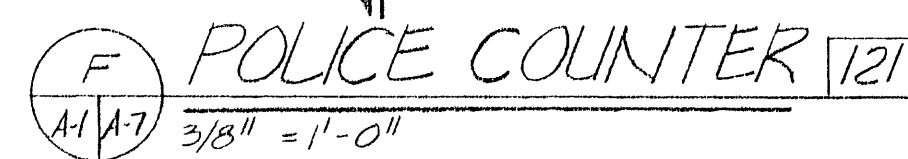
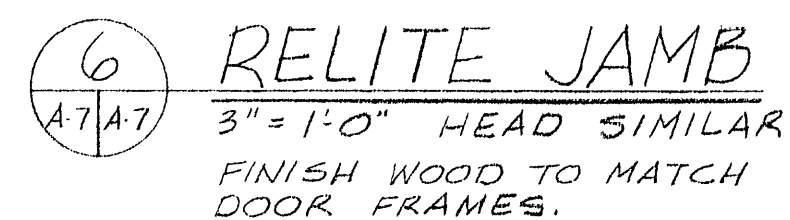
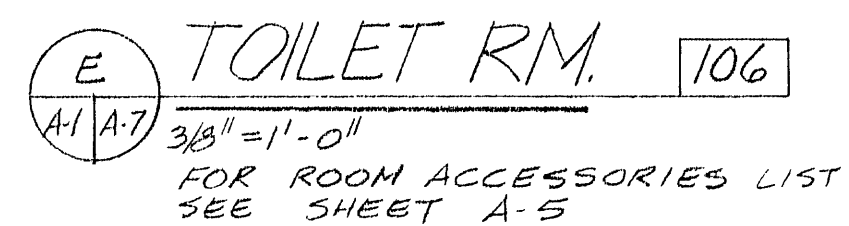
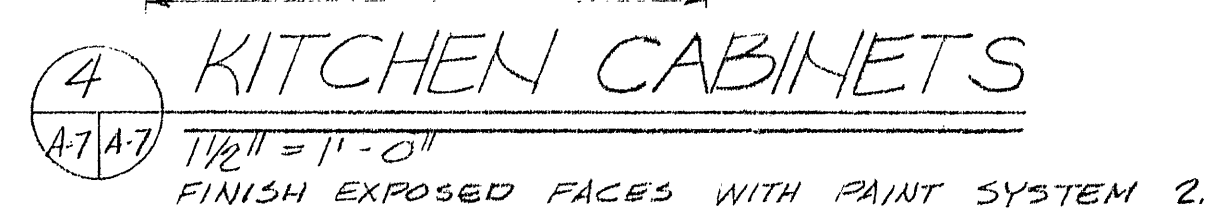
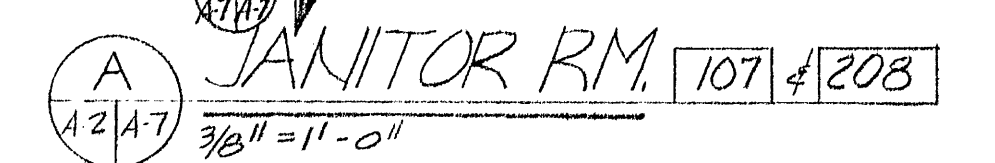
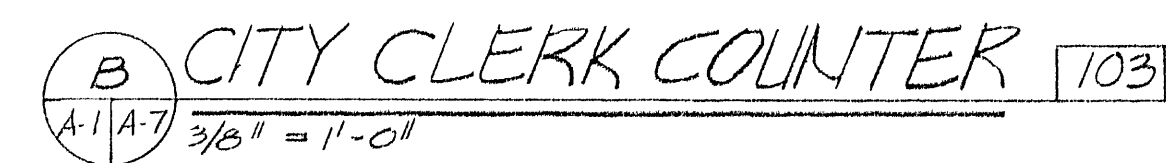
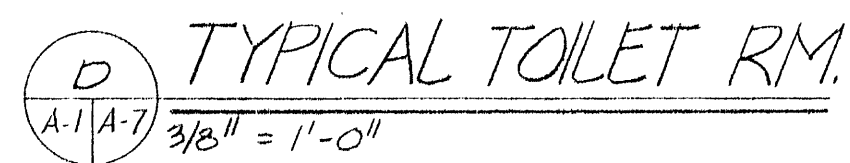
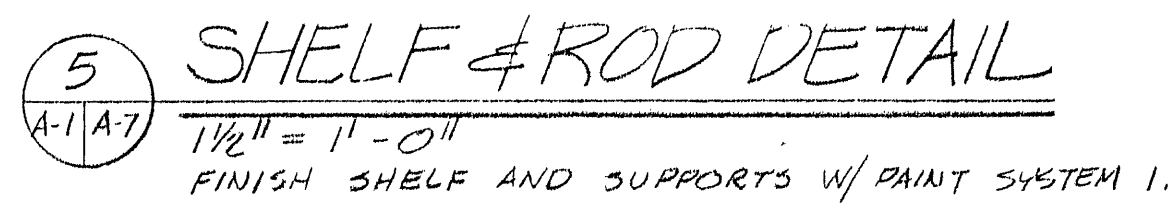
NO. DATE REVISION BY APPD.

DOOR AND FRAME  
SCHEDULE AND DETAILS

CITY HALL FOR  
HOME, ALASKA

SHEET OF 7 A-6  
PROJ. K 9327.1  
NO. 3 9355.1  
DATE 27 JUNE 75  
DWG. NO.







8.23 ±  
INV. SEWER  
INTERSECTION OF FRONT ST.  
& BERING ST. WATER & EL. 10.98 ±

CONCRETE DRIVEWAY  
CURB CUT TO CITY  
OF NOME STANDARDS  
N.I.C.

FRONT STREET

EXISTING WOOD BUILDING

CITY HALL BUILDING  
FIRST FLOOR LINE EL. 23.0'

DIVISION STREET

EAST STREET

FOR CONN.,  
SEE DETAIL

Ø P. POLE W/TRANSFORMER

BM.  
EL. 18.24'  
SPIKE IN NORTH SIDE  
OF POWER POLE 1'-0" ±  
ABOVE SIDEWALK

19.35

17.97

PROJECT NORTH

MAGNETIC NORTH

# LEGEND

18.75	EXISTING GRADE
20.50	FINISHED GRADE
BM	BENCH MARK
TC	TOP OF CURB
G	GUTTER
BW	BACK OF WALK
FH	FIRE HYDRANT
EL	ELEVATION
	CONC WALKWAY
	GRAVEL SURFACE

## NOTES:

- DATUM FOR THIS PLAN IS BASED ON USC&G BRASS CAP #7 1969 IN BASE OF FLAG POLE SOUTH SIDE OF FRONT STREET AT FEDERAL WAY ASSUMED ELEVATION 16.85'
- UNDER ANOTHER CONTRACT EXISTING BUILDINGS, FOUNDATIONS, & ON-SITE UTILITIES WILL BE REMOVED BUT NO GRADINGS WILL BE ACCOMPLISHED.

CH2M  
HILL

DES. JJP  
DR. PWS  
CHK. EAH  
APPD.

NO. DATE

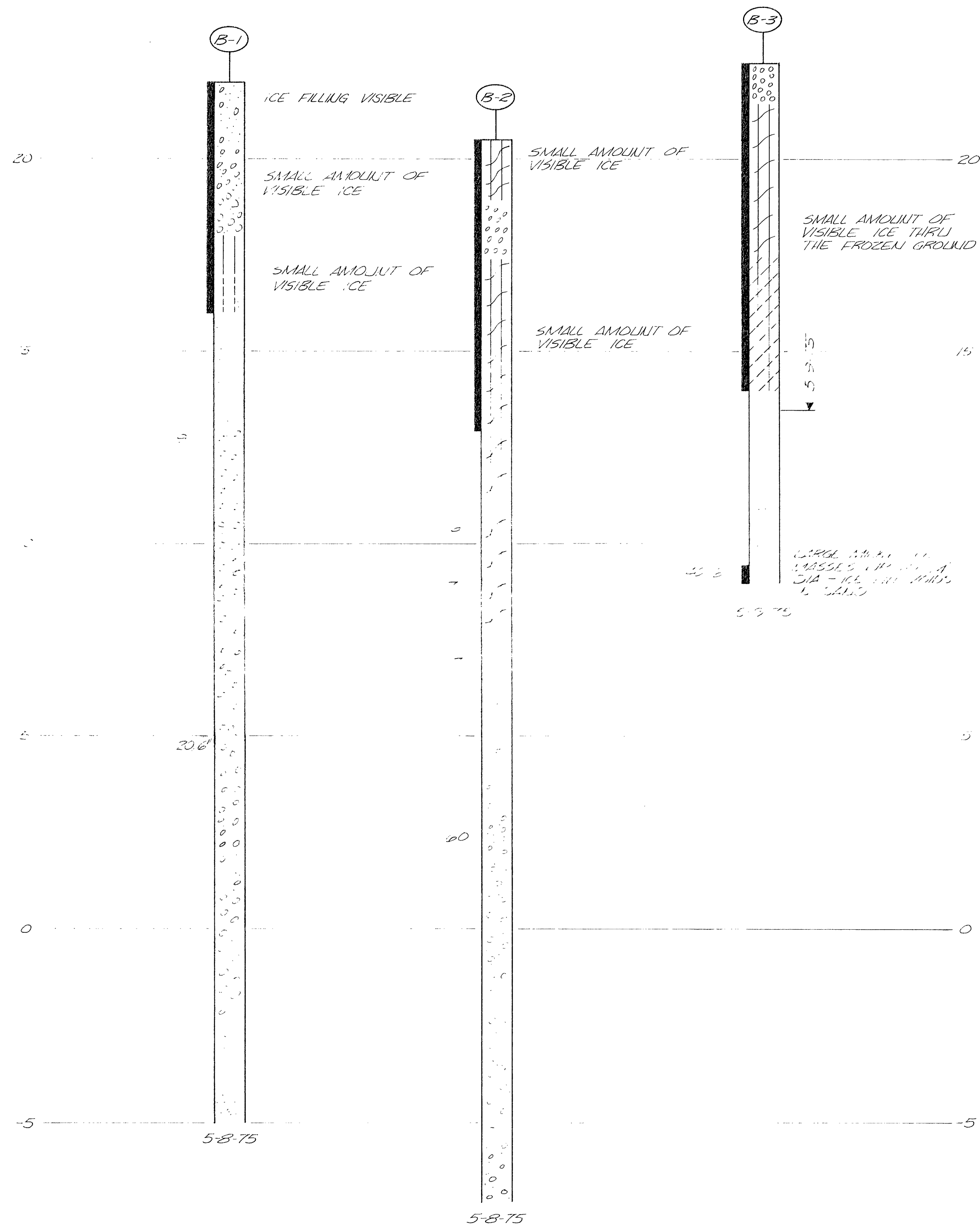
REVISION

BY APPD.

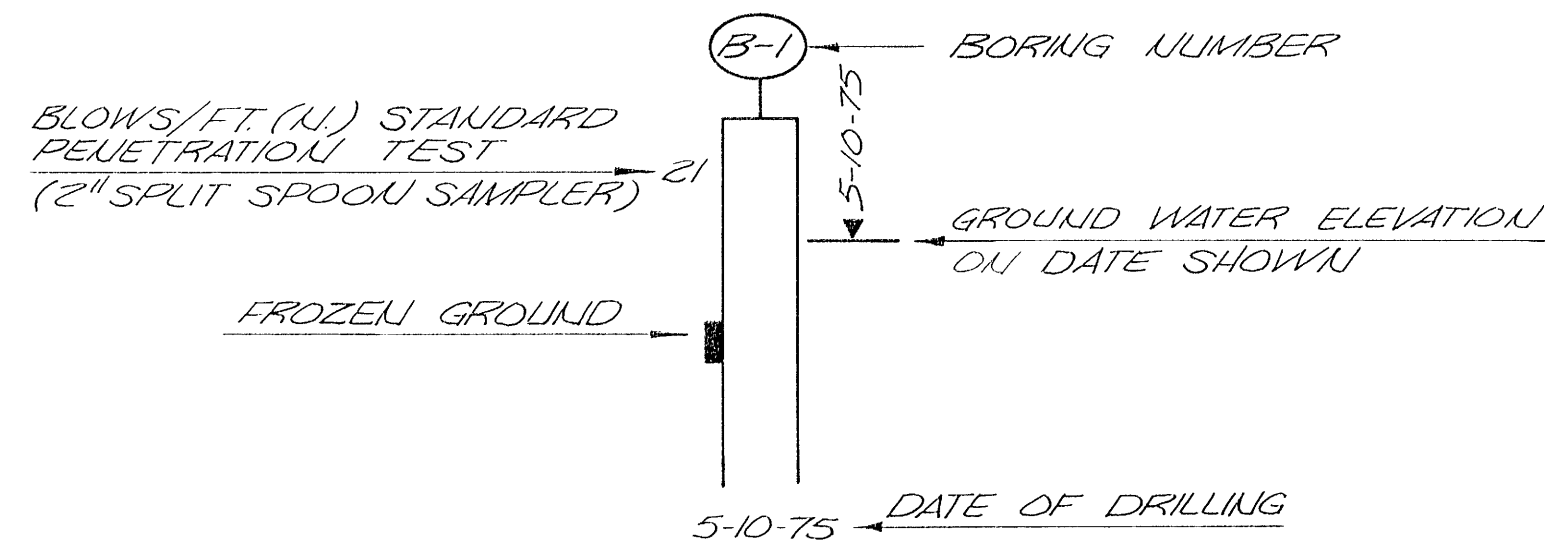
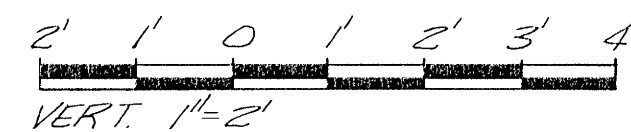
SITE PLAN 1" = 10'

CITY HALL FOR  
NOME, ALASKA

SHEET  
OF 2 C-1  
PROJ. K 93 27.1  
NO. S 93 55.1  
DATE  
27 JUNE 75  
DWG.  
NO.



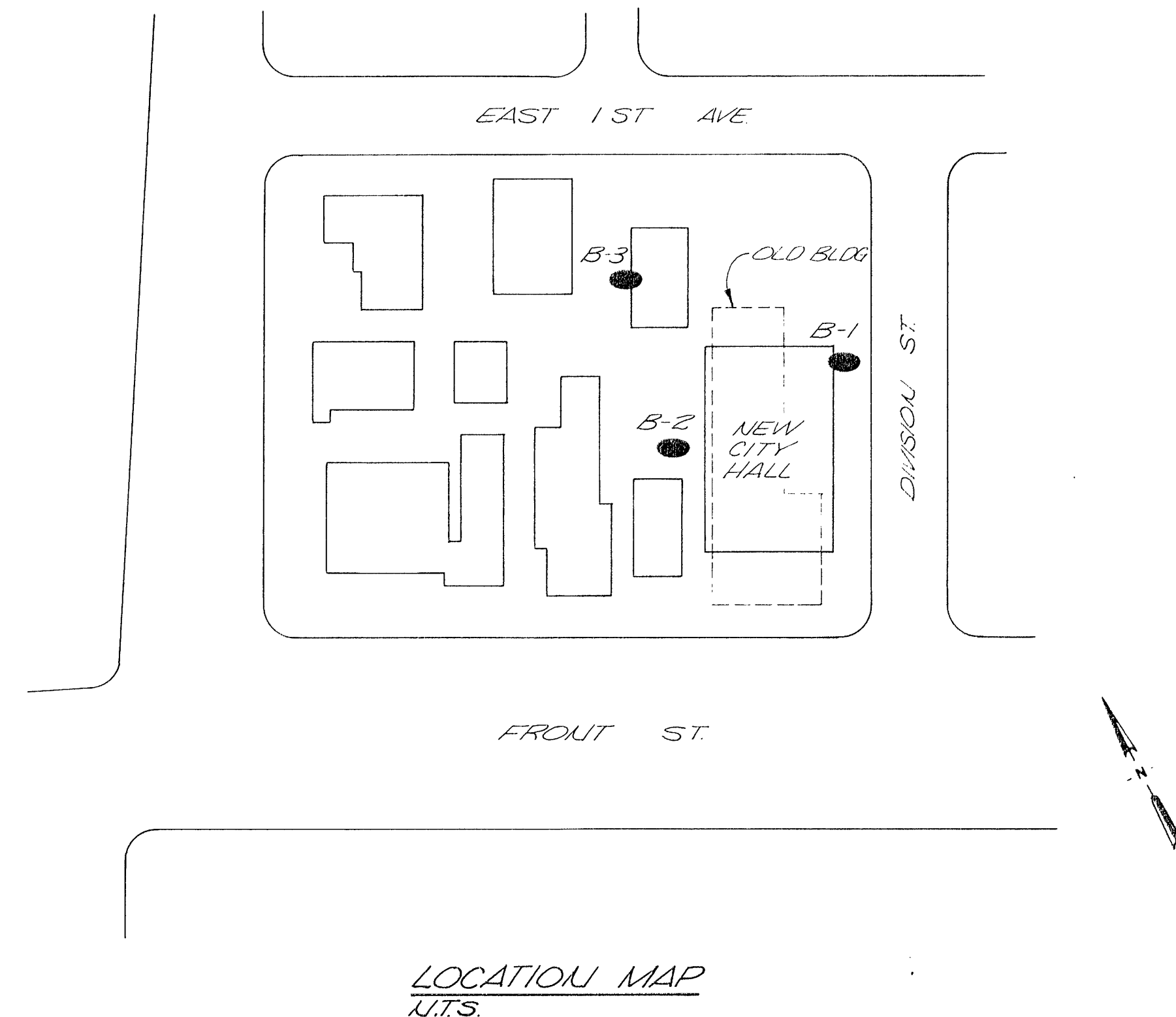
NOTES:  
1. TESTS MADE WITH 1'-2' OF SNOW ON GROUND.  
2. ALL BORINGS MADE WITH A MOBILE DRILL MODEL B-38 USING 6" DIA. CONTINUOUS FLIGHT ALIGER.  
3. GROUND WATER TABLE ANTICIPATED TO BE BETWEEN ELEVATION 5 & 2 IN BORING 1 & 2.



NOTE:  
THIS LOG REPRESENTS ONLY THE OPINION OF THE GEOLOGIST AS TO THE CHARACTER OF MATERIALS ENCOUNTERED IN THE TEST HOLES. NO WARRANTY EXPRESSED OR IMPLIED IS GIVEN IN REGARD TO ANY VARIATIONS WHICH MAY OCCUR BETWEEN TEST HOLE SITES.

	SAUD		SILT		GRAVELLY CLAY		ORGANIC SILT
	SILTY SAND		SANDY SILT		GRAVEL		SANDY GRAVEL
	CLAYEY SAND		CLAYEY SILT				

STANDARD BORING LOG SYMBOLS AND LEGEND



CH <sub>2</sub> M HILL	DES. MKWR								
	DR. MTBP								
	CHK.								
	APPD.	NO.	DATE	REVISION	BY	APPD.			

BORING LOGS

CITY HALL FOR  
NOME, ALASKA

SHEET C-2  
OF 2  
DATE 7 JULY 7  
DWG.  
NO.



# CITY HALL for NOME, ALASKA

## DRAWING INDEX



### CIVIL

- C-1 SITE PLAN
- C-2 SOIL BORING LOGS

### STRUCTURAL

- S-1 FOUNDATION PLAN
- S-2 FOUNDATION DETAILS
- S-3 FOUNDATION DETAILS

### ARCHITECTURAL

- A-1 FIRST FLOOR PLAN
- A-2 SECOND FLOOR PLAN
- A-3 ELEVATIONS & CROSS SECTION
- A-4 WALL SECTION & DETAILS
- A-5 FINISH SCHEDULE
- A-6 DOOR SCHEDULE & DETAILS
- A-7 INTERIOR ELEVATIONS & DETAILS

### MECHANICAL

- M-1 FIRST FLOOR PLUMBING PLAN
- M-2 SECOND FLOOR PLUMBING PLAN
- M-3 FIRST FLOOR HEATING & VENTILATING
- M-4 SECOND FLOOR HEATING & VENTILATING
- M-5 FIRST FLOOR PIPING PLAN & ELEVATIONS
- M-6 SECOND FLOOR PIPING PLAN
- M-7 DETAILS & SECTIONS
- M-8 DETAILS & SECTIONS

### ELECTRICAL

- E-1 SCHEDULES & DIAGRAMS
- E-2 FIRST FLOOR POWER PLAN
- E-3 FIRST FLOOR LIGHTING PLAN
- E-4 SECOND FLOOR POWER PLAN
- E-5 SECOND FLOOR LIGHTING PLAN
- E-6 DETAILS

# STRUCTURAL NOTES

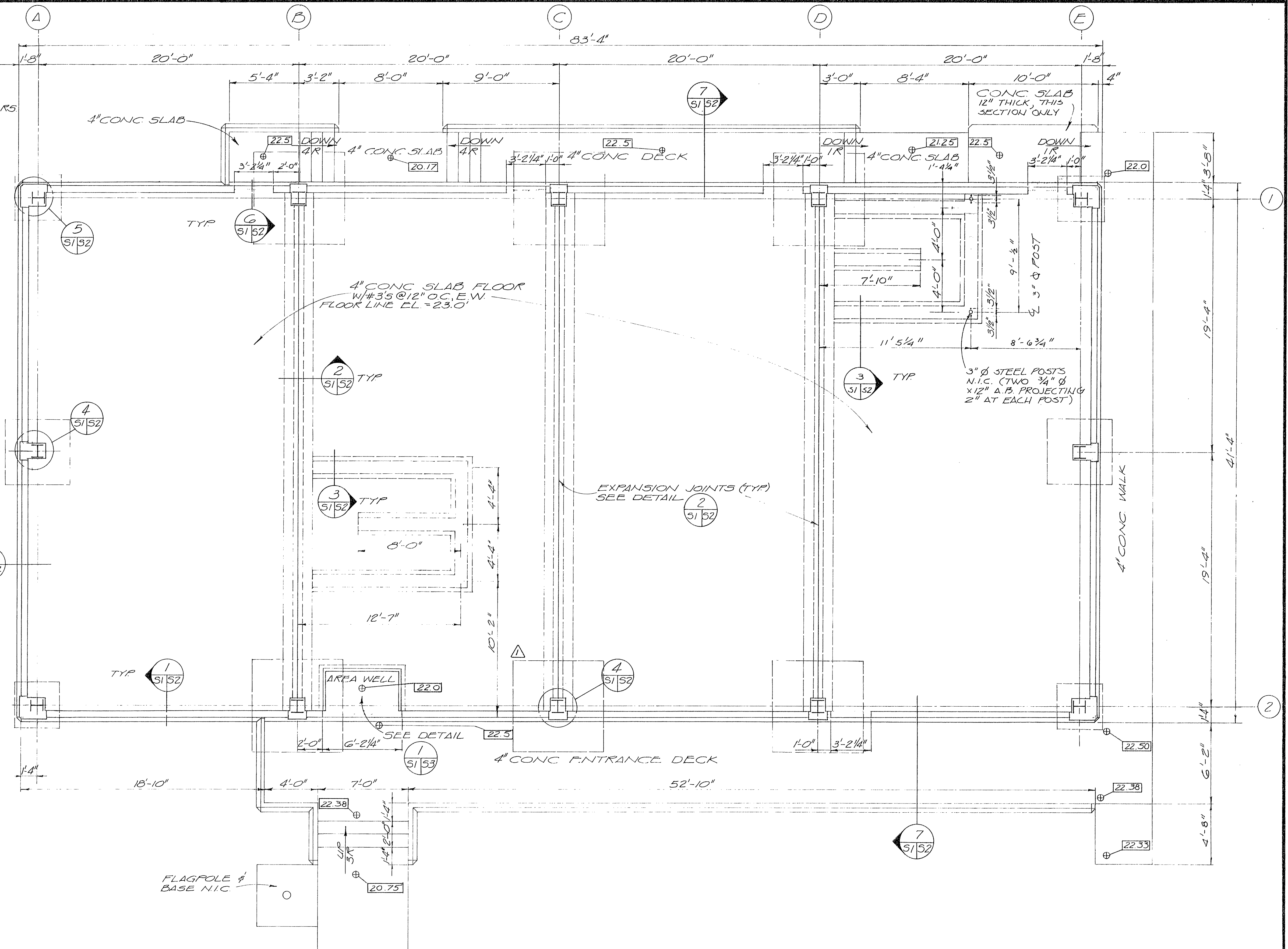
1. A COMPLETE SET OF ANCHOR BOLTS WITH A 1/2" PLYWOOD TEMPLATE FOR EACH SET SHALL BE PROVIDED TO THE CONTRACTOR BY THE BLDG. SUPPLIER.
2. PERIMETER FOUNDATION WALLS SHALL BE POURED MONOLITHIC WITH THE COLUMN PIERS.
3. AT THE COLUMN POCKETS, THE TOP 8 1/2" OF SUBGRADE INSULATION SHALL NOT BE PLACED UNTIL THE COLUMNS HAVE BEEN SET AND GROUTED.

## LEGEND AND ABBREVIATIONS

### STRUCTURAL SHEETS

B.M.	BENCH MARK
BLDG. MFR.	BUILDING MANUFACTURER
C	CENTER LINE
COL.	COLUMN
COL'S	COLUMNS
CONC.	CONCRETE
CONT.	CONTINUOUS
COP.	COPPER
CORP.	CORPORATION
CPLG.	COUPLING
E.W.	EACH WAY
EL.	ELEVATION
EXST.	EXISTING
FIN.	FINISH
FG.	FINISHED GRADE
HORZ.	HORIZONTAL
INV.	INVERT
MAX.	MAXIMUM
MIN.	MINIMUM
N.I.C.	NOT IN CONTRACT
N.T.S.	NOT TO SCALE
O.C.	ON CENTER
P.	PLATE
SPEC'S	SPECIFICATIONS
SQ.	SQUARE
S.S.	STAINLESS STEEL
STD.	STANDARD
TYP.	TYPICAL
VERT.	VERTICAL
WWM	WELDED WIRE MESH
W/	WITH
+	FINISHED GRADE

TYP



## FOUNDATION PLAN

CITY HALL FOR  
NOME, ALASKA



DES. E.A.H.  
DR. D.E.V.K.  
CHK. E.A.H.  
APPD.

NO.	DATE	REVISION
1	7-18-75	SHOW FOOTING AT COLUMN C-2

EAH EAH  
BY APPD.


SHEET OF 3 51  
PROJ. NO. K9327  
DATE 7 JULY 75  
DWG. NO.



DETAIL

$I'' = I' - O''$

DETAIL 2  
1" = 1'-0" 51 52

DETAIL  BARRIER  
(TYPICAL)  
UNDER  
SLAB

PLAN 4

---

$I'' = I' - O''$  S1 | S2

SECTION  
1" = 1'-0"

A  
52 52

NOTE: PERIMETER FOUNDATION WALLS SHALL BE POURED MONOLITHIC WITH THE COLUMN PIERS.

PLAN

---

1" = 1'-0"

5
S1
S2

DETAIL

---

N.T.S.

7
S1   S2

STD. FOUNDATION EXCAVATION DETAIL

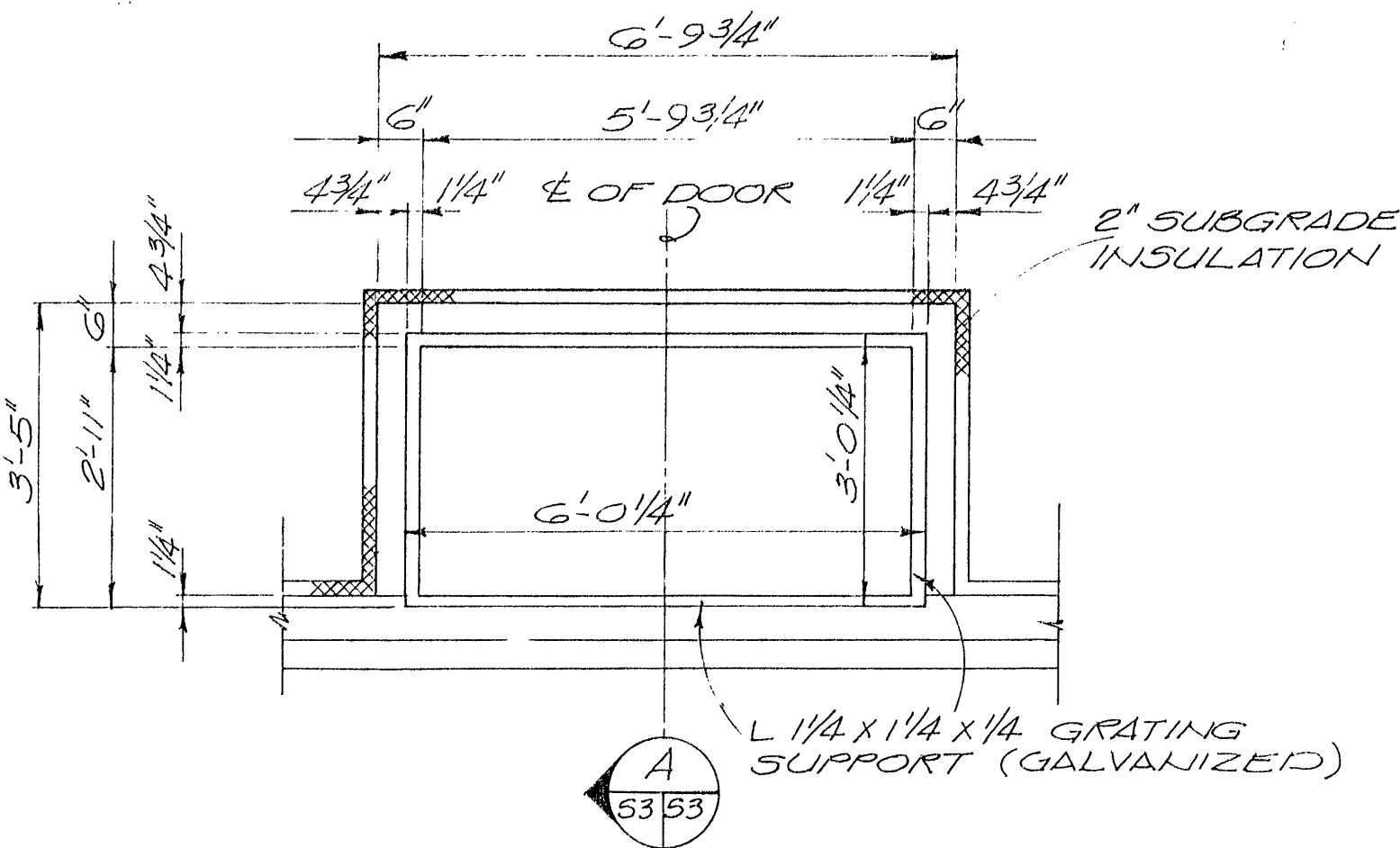
NOTES:

1. CONTRACTOR SHALL STRIP ALL ORGANIC SILT AND CLAYEY SILT BELOW STRUCTURE AS SHOWN ON THE SOIL BORING LOGS AND BACKFILL WITH ENGINEERED FILL, PER SPECS.
2. IF NECESSARY, BENCHES MAY BE STRIPPED IN MANNER SHOWN IN ORDER TO FOLLOW APPROXIMATE CONTOURS OF BOTTOM OF ORGANIC AND/OR CLAYEY SILT LAYER.

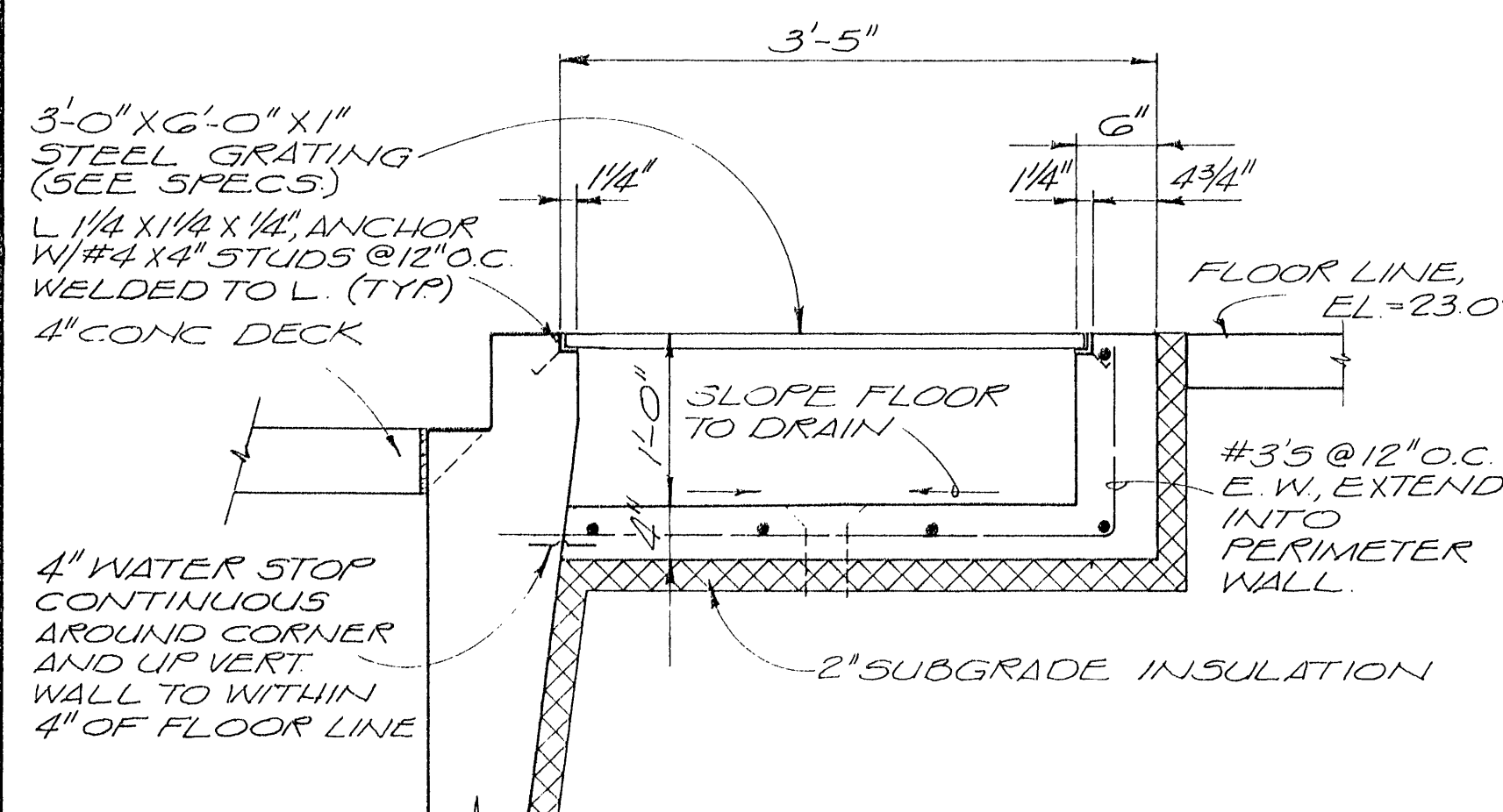
NOTE: THIS DETAIL TYP. AT ALL EXTERIOR DOORS.

STD. STAIR DETAIL  
1"=1'-0"

NOTE\*: STAIR RISERS  
ACCORDING TO FIN.  
ELEVATIONS SHOWN  
ON FOUNDATION  
PLAN, SHEET NO. 51.

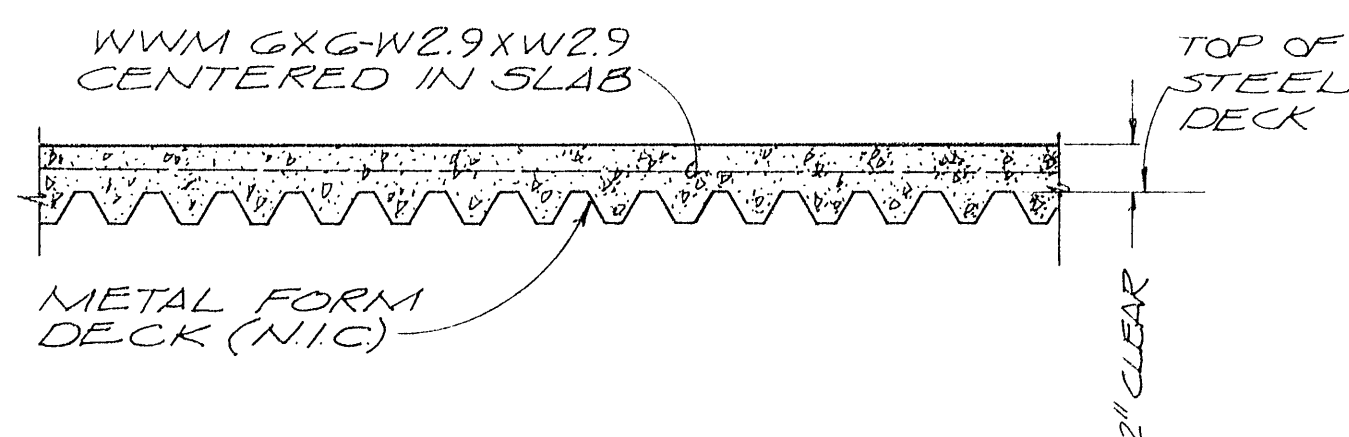


PLAN  
1/2" = 1'-0"

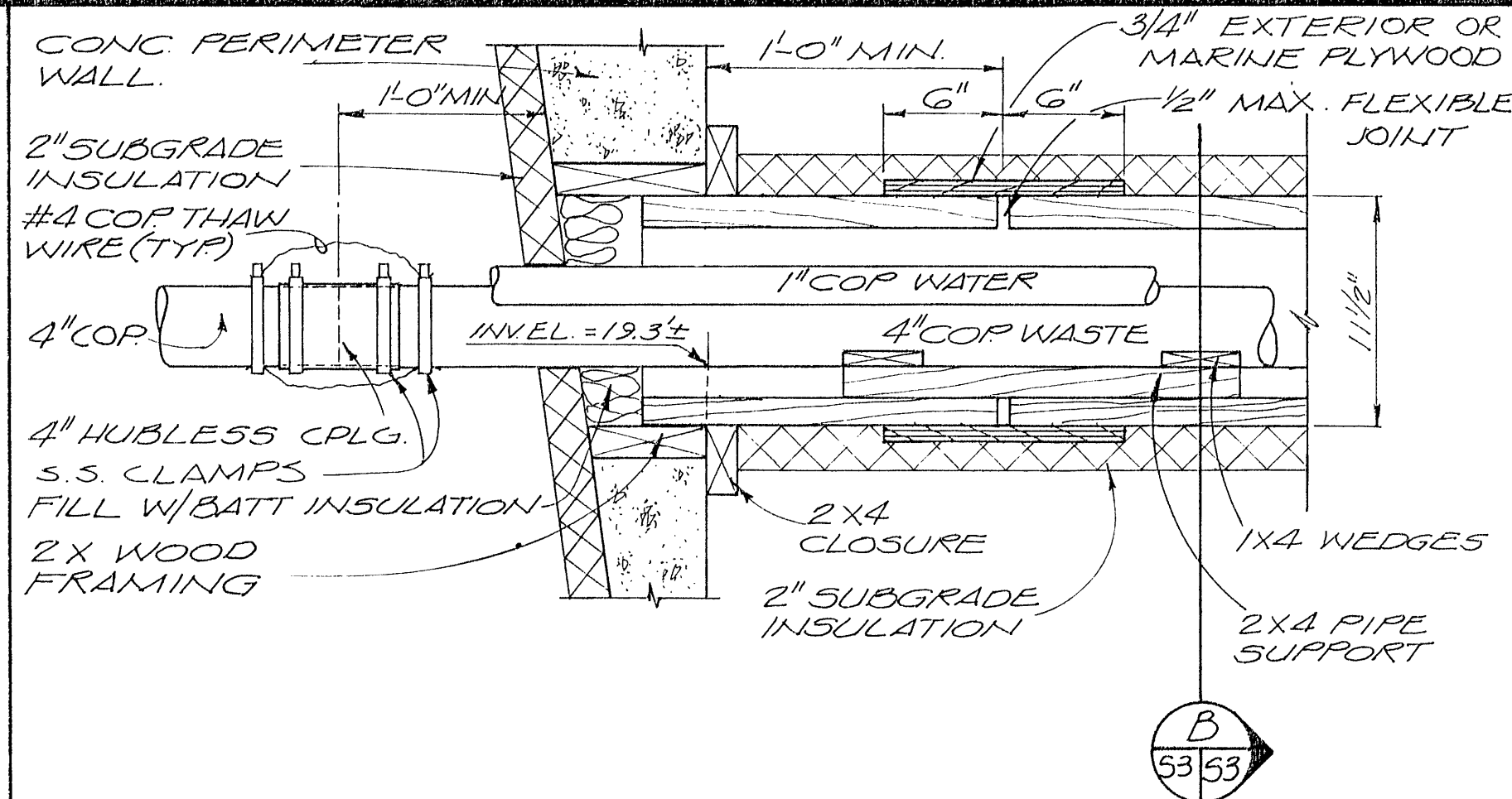


SECTION  
1" = 1'-0"

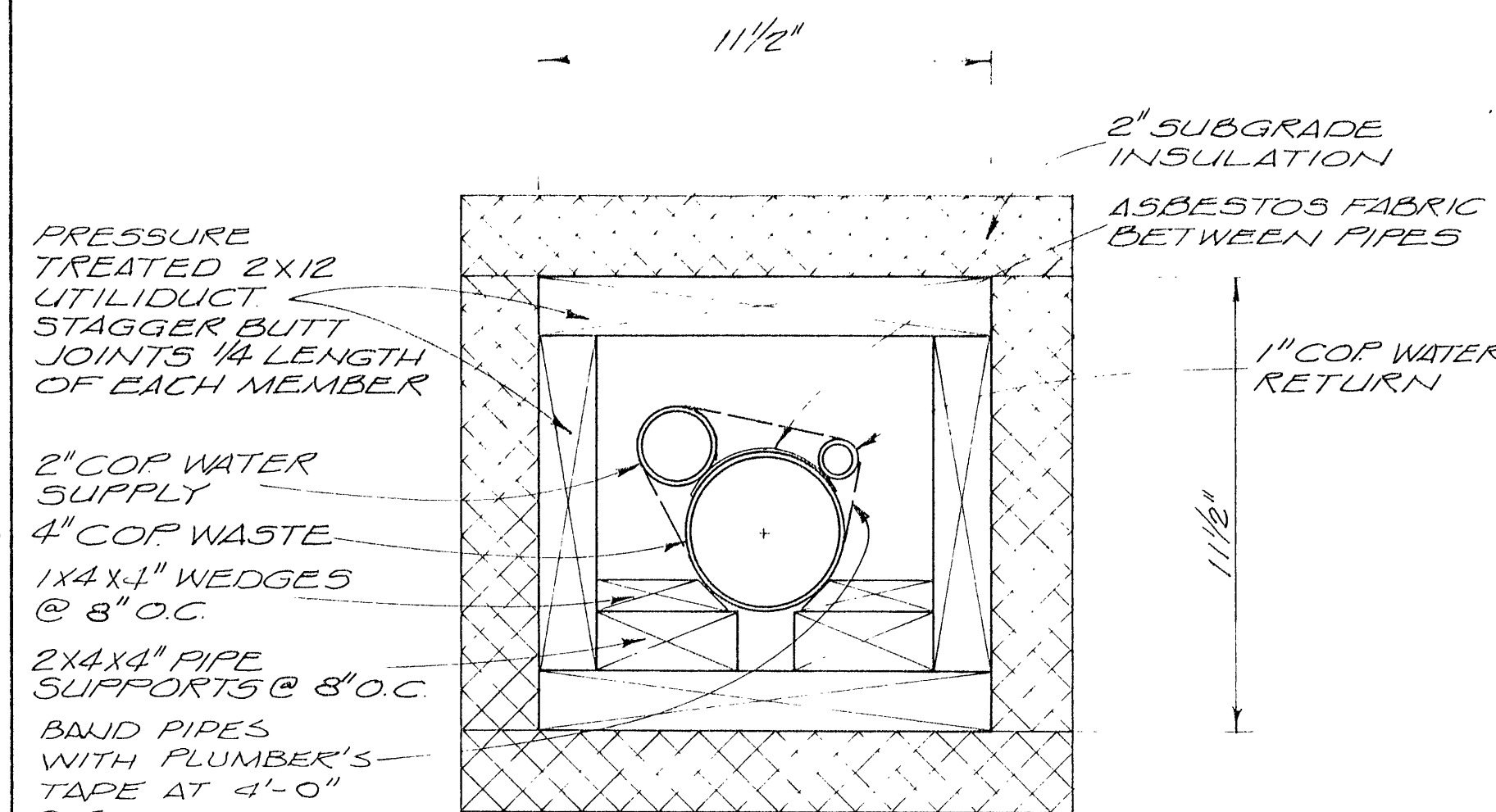
AREA WELL DETAIL  
1/53



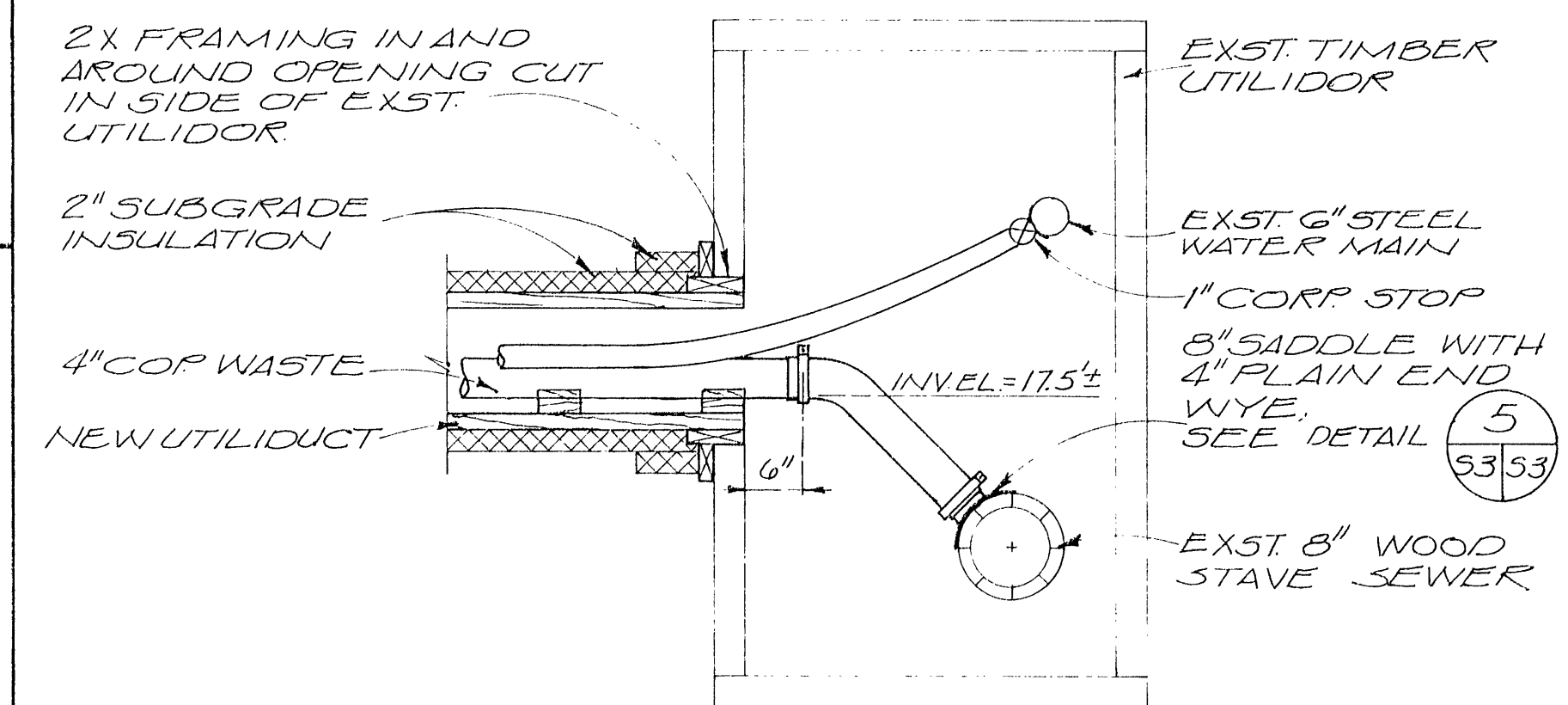
STD 2ND FLOOR SLAB  
REINFORCING DETAIL  
N.T.S.



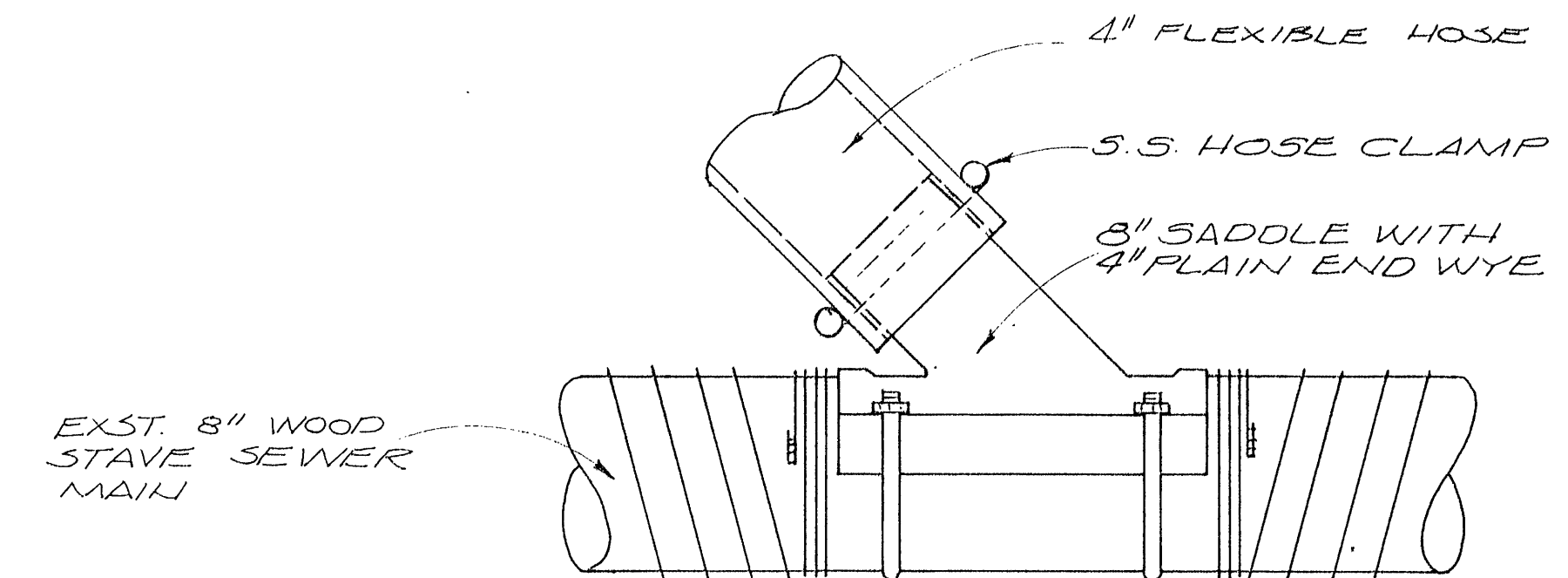
DETAIL  
1 1/2" = 1'-0"



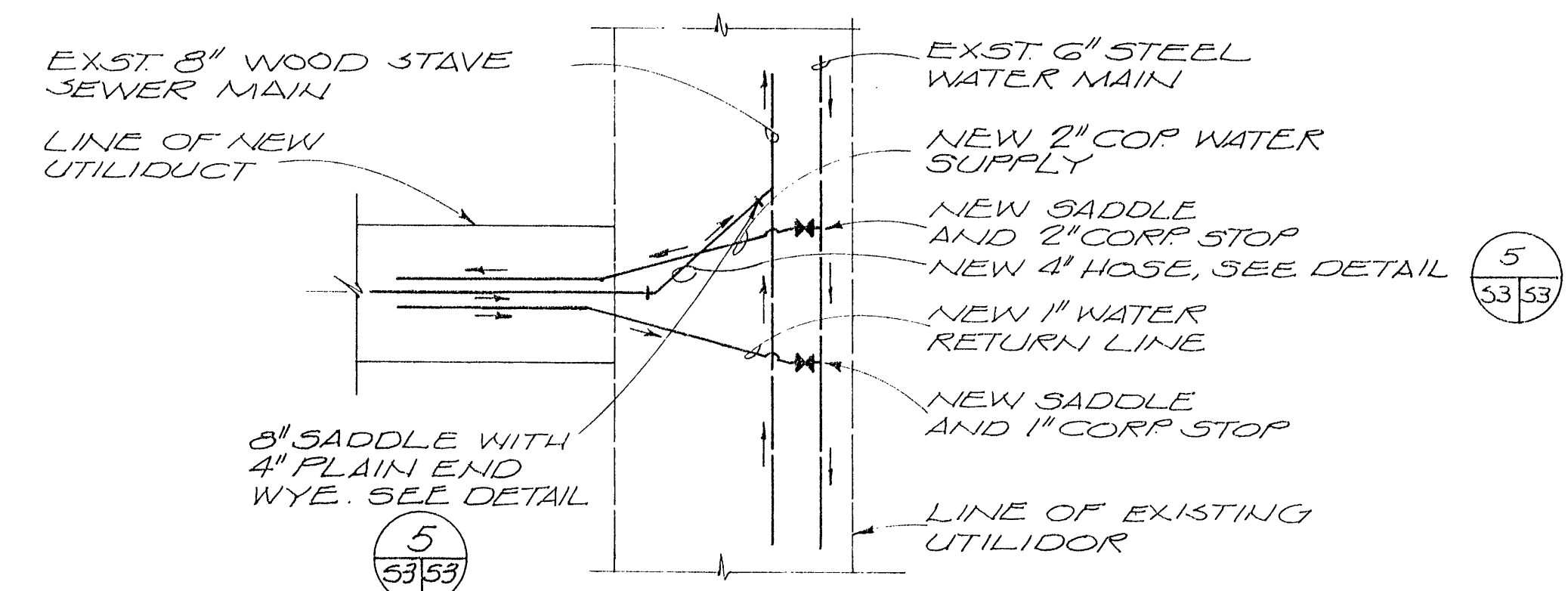
SECTION  
3" = 1'-0"



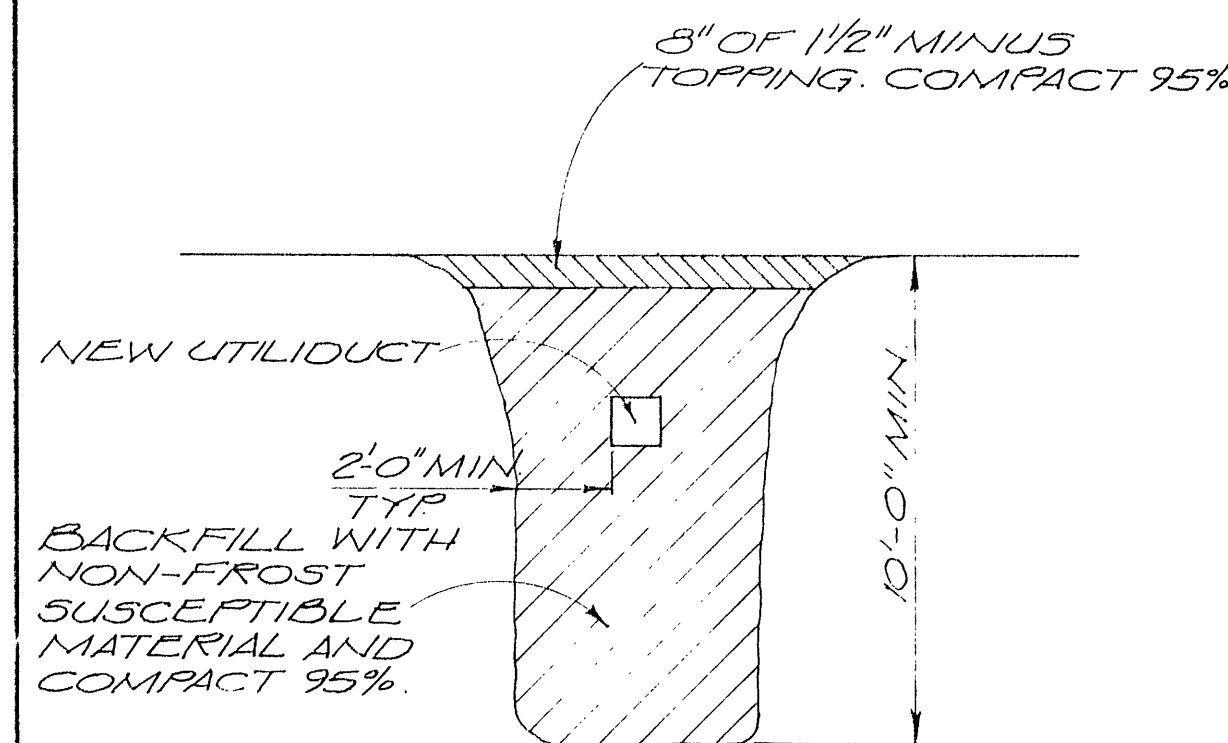
DETAIL  
3/4" = 1'-0"



DETAIL  
N.T.S.



PLAN DETAIL  
N.T.S.



STD TRENCH DETAIL  
N.T.S.