



June 11, 2025

To All Causeway Users,

Effective this date, **pedestrian traffic is no longer permitted** on the Causeway facility. As vessel activity continues to increase, having pedestrians walk among industrial traffic moving rock, gravel, equipment and cargo has become a significant safety concern.

For all vessels carrying passengers and crew that wish to walk while in port, they must travel to and from shore via some type of vehicle transport. These options include cabs, shuttles and rental cars locally available for transport through the industrial area.

The attached map shows two drop off and pick up locations (rally points) beyond the Jafet Bridge, which crosses the Snake River. However, other locations throughout the community are an option as well, providing they are not private property, unless expressed consent has been given for use. Vessel operators should coordinate specific rally points with their transports and pedestrians.

If you have questions regarding this notice, or wish to discuss further, please contact Lucas Stotts, Harbormaster, at 907.304.1906 or [lstotts@nomealaska.org](mailto:lstotts@nomealaska.org).

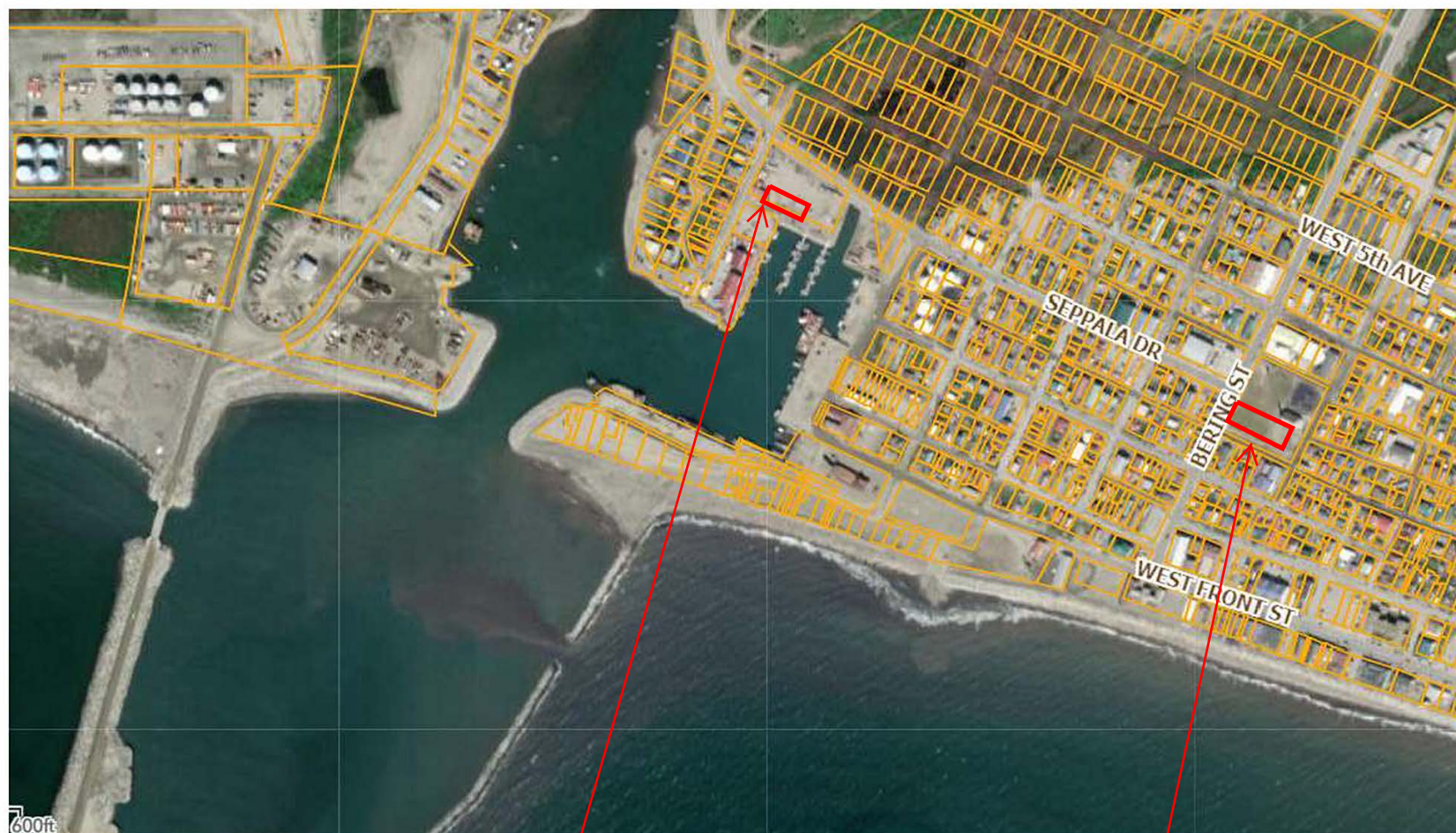
The Port of Nome sincerely appreciates your cooperation in keeping port operations safe.

Sincerely,

Joy Baker  
Port Director

Cc: Lucas Stotts – Harbormaster  
Lee Smith – City Manager  
Nome Port Commission

PORT OF NOME CAUSEWAY  
PEDESTRIAN TRAFFIC  
RALLY POINTS



Harbormaster Office Parking Lot

Old St. Joe's Parking Lot