

NOME

The Nation's Arctic Port

Meeting the demands of the maritime industry through targeted infrastructure growth, while supporting national security, safe maritime transportation, and marine environmental protection at the Arctic's first strategic deep draft port.



Benefits of the Deep Draft Port

National Security: Strategically located near the Bering Strait and the Arctic Ocean, Nome's Deep Draft Port will enable the United States to respond to the increasing foreign presence in the Arctic, including accelerated Russian development of the Northern Sea Route.

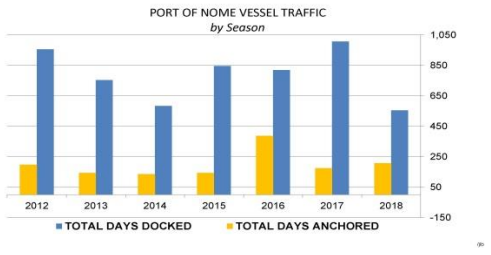
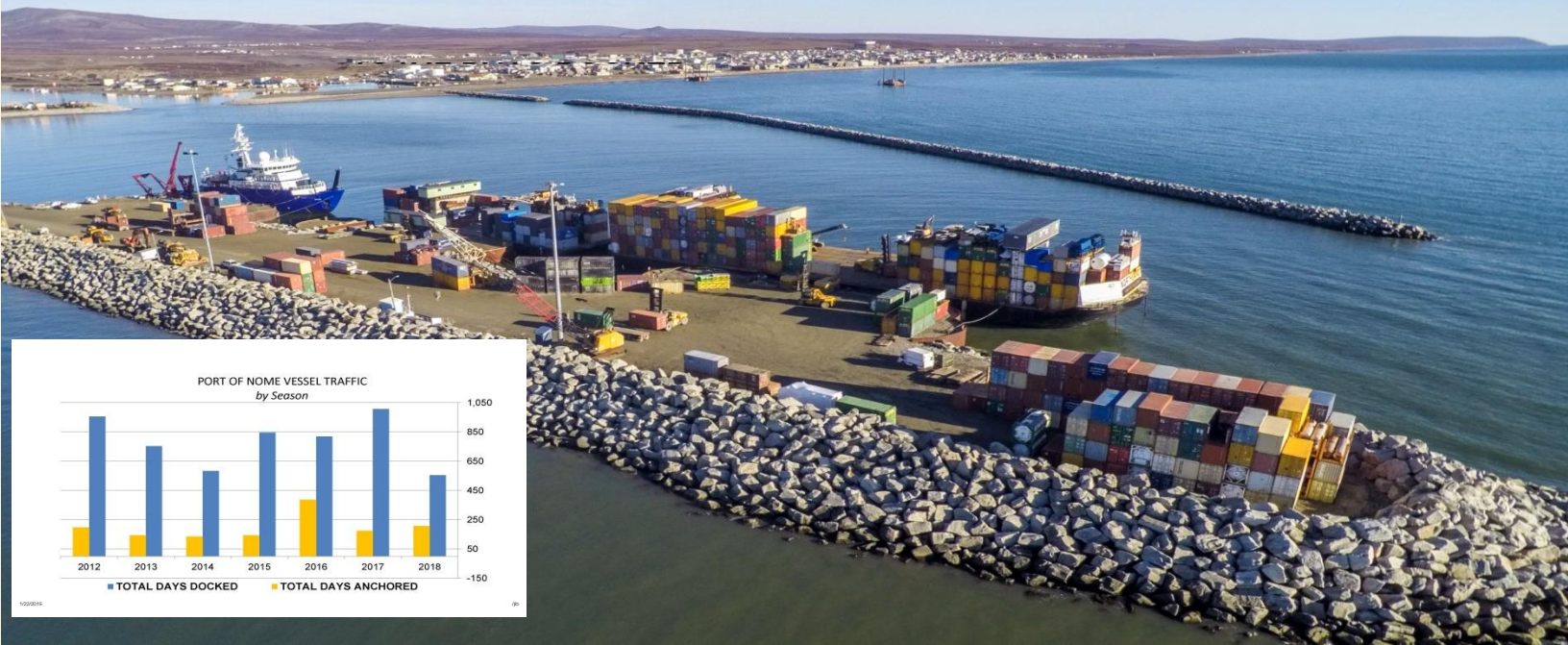
Life Safety: Bering Strait traffic nearly doubled since 2009. The Deep Draft Port allows the Coast Guard to maintain a material presence and fulfill its mission of protecting the public, environment, and national economic interests.

Environmental Protection: Port expansion is needed to serve vessels in distress, minimize impacts to environment, and provide protected moorage for vessels seeking repair and service.

Economic Viability: The Port will facilitate economic development and ensure that vital food, fuel, and supplies reach residents of America's and Alaska's Arctic and sub-Arctic in a cost-effective way.

Sustaining Culture: Alaska Natives comprise half of Nome's 3,800 residents, and about 75 percent of residents in nearby communities. Stabilizing the cost of living, while exceeding environmental standards will ensure that traditional food gathering and other culturally important activities continue to thrive.

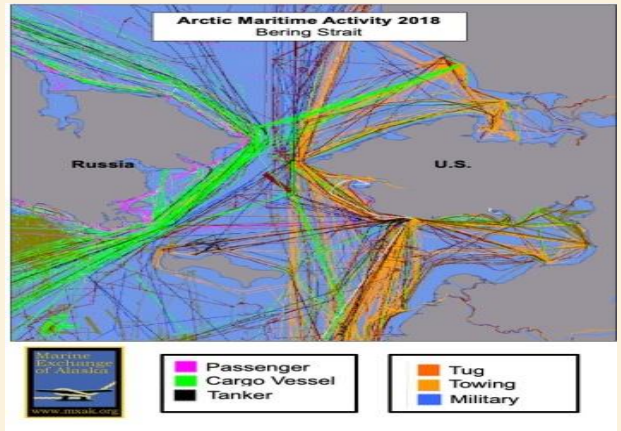




Nome: A Regional Hub

Serving Western Alaska and the Arctic for more than a century.

- ▶ Nome was established in 1901 by gold seekers; mining remains an important aspect of the economy today.
- ▶ Services include a level-four trauma center, well-trained volunteer fire and ambulance departments, 2x daily jet service, telecommunications, and a 230-mile road system.
- ▶ Nome’s aviation services frequently supply 64 domestic and international locations each year.



Port Activity

- ▶ Groceries, construction materials, equipment, gravel, and other goods are shipped to 60 communities, from Unalaska to Barrow – more than 1,300 miles.
- ▶ Port traffic has increased exponentially since 1990. A growing number of commercial & private vessels transit the nearby Bering Strait, using Nome for resupply.
- ▶ From 2012-2017, the Port averaged 54,461 tons of rock, sand, and gravel; 37,643 tons of cargo; and 11.27 million gallons of refined petroleum products.
- ▶ The Port supports 450 regional seafood harvesters and processors and is home to Norton Sound Seafood Products.
- ▶ Nome hosted the 820-foot Crystal Serenity in 2016/2017, with 1,700 passengers and crew, illustrating a growing interest in Arctic cruising. Additionally, several smaller cruise ships regularly sail between Nome, Greenland, Russia, Norway, and other global destinations.