

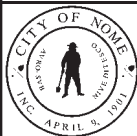
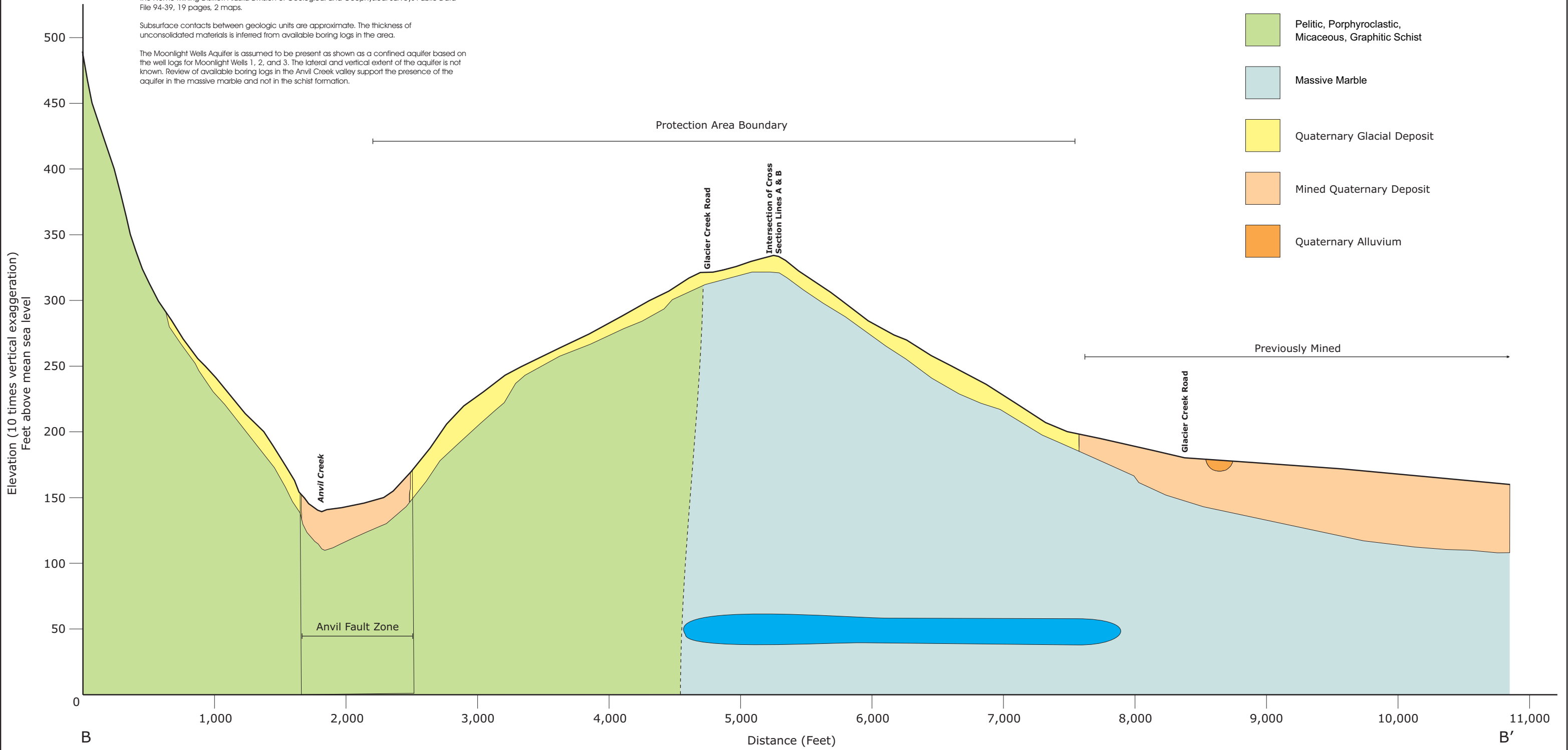
Notes:

Surficial geology based on Bundtzen, T. K., Reger, R. D., Laird, G. M., Pinney, D. S., Clautice, K. H., Liss, S. A., and Cruse, G. R., 1994, Progress Report on the Geology and Mineral Resources of the Nome Mining District: Alaska Division of Geological and Geophysical Surveys Public Data File 94-39, 19 pages, 2 maps.

Subsurface contacts between geologic units are approximate. The thickness of unconsolidated materials is inferred from available boring logs in the area.

The Moonlight Wells Aquifer is assumed to be present as shown as a confined aquifer based on the well logs for Moonlight Wells 1, 2, and 3. The lateral and vertical extent of the aquifer is not known. Review of available boring logs in the Anvil Creek valley support the presence of the aquifer in the massive marble and not in the schist formation.

- Water Saturated Zone (Moonlight Wells Aquifer)
- Pelitic, Porphyroclastic, Micaceous, Graphitic Schist
- Massive Marble
- Quaternary Glacial Deposit
- Mined Quaternary Deposit
- Quaternary Alluvium



Scale:
Viewing: Northeast
Note: see figure 2 for section location

CITY OF NOME
MOONLIGHT WELLS PROTECTION AREA
B - B' CROSS SECTION

Date Drawn: April 5, 2005		Figure 3
Drawn By: ME	Checked By: SJ	BEESC Project No: 25071